



# SZABO SCANDIC

Part of Europa Biosite

## Produktinformation



Forschungsprodukte & Biochemikalien



Zellkultur & Verbrauchsmaterial



Diagnostik & molekulare Diagnostik



Laborgeräte & Service

Weitere Information auf den folgenden Seiten!  
See the following pages for more information!



### Lieferung & Zahlungsart

siehe unsere [Liefer- und Versandbedingungen](#)

### Zuschläge

- Mindermengenzuschlag
- Trockeneiszuschlag
- Gefahrgutzuschlag
- Expressversand

### SZABO-SCANDIC HandelsgmbH

Quellenstraße 110, A-1100 Wien

T. +43(0)1 489 3961-0

F. +43(0)1 489 3961-7

[mail@szabo-scandic.com](mailto:mail@szabo-scandic.com)

[www.szabo-scandic.com](http://www.szabo-scandic.com)

[linkedin.com/company/szaboscandic](https://www.linkedin.com/company/szaboscandic) 

# XRN1 Antibody

Rabbit Polyclonal

Antigen Affinity Purified	Protein ID	Q6MZS8
Catalog No. A300-443A-T	GeneID	54464
Lot No. A300-443A-T-5		

---

<b>APPLICATIONS</b>	WB, IP
<b>SPECIES REACTIVITY</b>	Human, Mouse
<b>AMOUNT</b>	20 µl (2 blots)
<b>CONCENTRATION</b>	100 µg/ml
<b>STORAGE/SHELF LIFE</b>	2 - 8° C / 1 year from date of receipt
<b>PHYSICAL STATE</b>	Liquid
<b>BUFFER</b>	Tris-buffered Saline containing 0.1% BSA and 0.09% Sodium Azide
<b>ISOTYPE</b>	IgG
<b>ORIGIN</b>	USA
<b>PRODUCTION PROCEDURES</b>	Antibody was affinity purified using an epitope specific to XRN1 immobilized on solid support.

The epitope recognized by A300-443A-T maps to a region between residue 1650 and the C-terminus (residue 1706) of human 5'-3' Exoribonuclease 1 using the numbering given in TrEMBL entry Q6MZS8 (GeneID 54464).

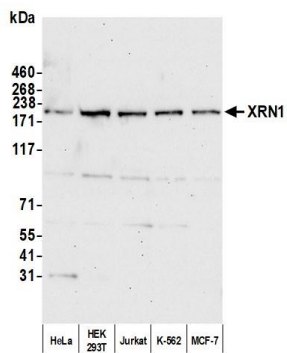
**APPLICATIONS** Centrifuge tube to remove product from lid. Optimal working dilutions should be determined experimentally by the investigator. Prepare working dilution immediately before use.

Western Blot 1:1000

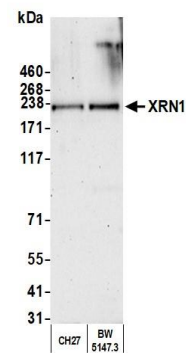
Immunoprecipitation The antibody contained within A300-443A-T has been qualified for use in immunoprecipitation; however, we recommend using the alternative formulation of this antibody found as product A300-443A.

**ADDITIONAL INFO** <https://www.bethyl.com/product/A300-443A-T>  
Use the link above to view SDS, a current list of citations, and other product specific information.  
IP-western blot protocol: [https://www.bethyl.com/content/protocol\\_IP\\_WB](https://www.bethyl.com/content/protocol_IP_WB)

This document certifies that this product has met all of the quality control standards defined by Bethyl Laboratories, Inc.  
Michael Spencer, PhD Date: September 1, 2021



**Detection of human XRN1 by western blot. Samples:** Whole cell lysate (10  $\mu$ g) from HeLa, HEK293T, Jurkat, K-562, and MCF-7 cells prepared using NETN lysis buffer. **Antibody:** Affinity purified rabbit anti-XRN1 antibody (A300-443A-T lot 5) used for WB at 1:1000. **Detection:** Chemiluminescence with an exposure time of 30 seconds.



**Detection of mouse XRN1 by western blot. Samples:** Whole cell lysate (10  $\mu$ g) from CH27 and BW5147.3 cells prepared using NETN lysis buffer. **Antibody:** Affinity purified rabbit anti-XRN1 antibody (A300-443A-T lot 5) used for WB at 1:1000. **Detection:** Chemiluminescence with an exposure time of 75 seconds.