



# SZABO SCANDIC

Part of Europa Biosite

## Produktinformation



Forschungsprodukte & Biochemikalien



Zellkultur & Verbrauchsmaterial



Diagnostik & molekulare Diagnostik



Laborgeräte & Service

Weitere Information auf den folgenden Seiten!  
See the following pages for more information!



### Lieferung & Zahlungsart

siehe unsere [Liefer- und Versandbedingungen](#)

### Zuschläge

- Mindermengenzuschlag
- Trockeneiszuschlag
- Gefahrgutzuschlag
- Expressversand

### SZABO-SCANDIC HandelsgmbH

Quellenstraße 110, A-1100 Wien

T. +43(0)1 489 3961-0

F. +43(0)1 489 3961-7

[mail@szabo-scandic.com](mailto:mail@szabo-scandic.com)

[www.szabo-scandic.com](http://www.szabo-scandic.com)

[linkedin.com/company/szaboscandic](https://www.linkedin.com/company/szaboscandic) 

# WSTF Antibody

Rabbit Polyclonal

Antigen Affinity Purified

Protein ID Q9UIG0

Catalog No. A300-446A-T

GeneID 9031

Lot No. A300-446A-T-3

---

<b>APPLICATIONS</b>	WB, IP, IHC
<b>SPECIES REACTIVITY</b>	Human
<b>PRESUMED REACTIVITY</b>	Based on 100% sequence identity, this antibody is predicted to react with Mouse
<b>AMOUNT</b>	10 µl
<b>CONCENTRATION</b>	200 µg/ml
<b>STORAGE/SHELF LIFE</b>	2 - 8°C / 1 year from date of receipt
<b>PHYSICAL STATE</b>	Liquid
<b>BUFFER</b>	Tris-buffered Saline containing 0.1% BSA and 0.09% Sodium Azide
<b>ISOTYPE</b>	IgG
<b>ORIGIN</b>	USA
<b>PRODUCTION PROCEDURES</b>	Antibody was affinity purified using an epitope specific to WSTF immobilized on solid support.

The epitope recognized by A300-446A-T maps to a region between residues 1 and 50 of human Williams Syndrome Transcription Factor using the numbering given in SwissProt entry Q9UIG0 (GeneID 9031).

**APPLICATIONS** Centrifuge tube to remove product from lid. Optimal working dilutions should be determined experimentally by the investigator. Prepare working dilution immediately before use.

Western Blot 1:2,000 - 1:10,000

Immunoprecipitation 2 - 5 µg/mg lysate

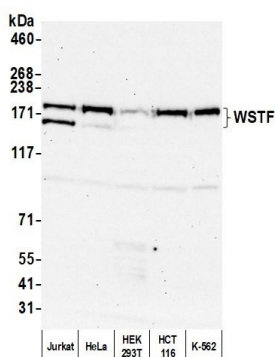
Immunohistochemistry 1:50 to 1:250. Epitope retrieval with citrate buffer pH6.0 is recommended for FFPE tissue sections.

**ADDITIONAL INFO** <https://www.bethyl.com/product/A300-446A-T>

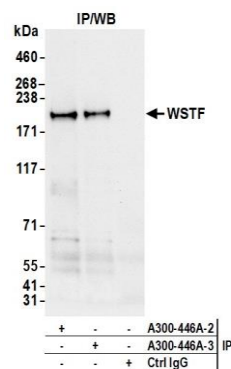
Use the link above to view SDS, a current list of citations, and other product specific information.

IP-western blot protocol: [https://www.bethyl.com/content/protocol\\_IP\\_WB](https://www.bethyl.com/content/protocol_IP_WB)

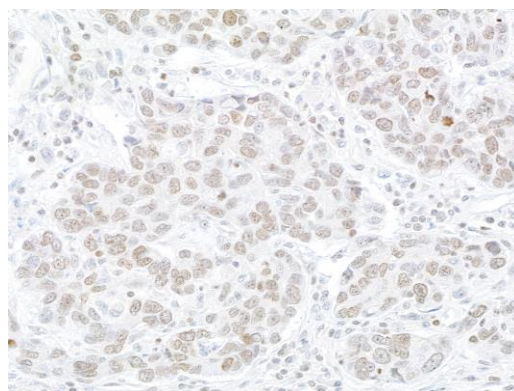
This document certifies that this product has met all of the quality control standards defined by Bethyl Laboratories, Inc.  
Michael Spencer, PhD Date: April 25, 2022



**Detection of human WSTF by western blot.** *Samples:* Whole cell lysate (50  $\mu$ g) from Jurkat, HeLa, HEK293T, HCT 116, and K-562 cells prepared using NETN lysis buffer. *Antibody:* Affinity purified rabbit anti-WSTF antibody (A300-446A lot 3) used for WB at 0.1  $\mu$ g/ml. *Detection:* Chemiluminescence with an exposure time of 30 seconds.



**Detection of human WSTF by western blot of immunoprecipitates.** *Samples:* Whole cell lysate (1.0 mg per IP reaction; 20% of IP loaded) from K-562 cells prepared using NETN lysis buffer. *Antibodies:* Affinity purified rabbit anti-WSTF antibody (A300-446A lot 3) used for IP at 6  $\mu$ g per reaction. WSTF was also immunoprecipitated by a previous lot of this antibody (A300-446A lot 2). For blotting immunoprecipitated WSTF, A300-446A was used at 0.2  $\mu$ g/ml. *Detection:* Chemiluminescence with an exposure time of 10 seconds.



**Detection of human WSTF by immunohistochemistry.** *Sample:* FFPE section of human breast cancer. *Antibodies:* Affinity purified rabbit anti-WSTF (A300-446A Lot 3) used at a dilution of 1:200 (1  $\mu$ g/ml). *Detection:* DAB