



SZABO SCANDIC

Part of Europa Biosite

Produktinformation



Forschungsprodukte & Biochemikalien



Zellkultur & Verbrauchsmaterial



Diagnostik & molekulare Diagnostik



Laborgeräte & Service

Weitere Information auf den folgenden Seiten!
See the following pages for more information!



Lieferung & Zahlungsart

siehe unsere [Liefer- und Versandbedingungen](#)

Zuschläge

- Mindermengenzuschlag
- Trockeneiszuschlag
- Gefahrgutzuschlag
- Expressversand

SZABO-SCANDIC HandelsgmbH

Quellenstraße 110, A-1100 Wien

T. +43(0)1 489 3961-0

F. +43(0)1 489 3961-7

mail@szabo-scandic.com

www.szabo-scandic.com

[linkedin.com/company/szaboscandic](https://www.linkedin.com/company/szaboscandic) 

WSTF Antibody

Rabbit Polyclonal

Antigen Affinity Purified

Protein ID Q9UIG0

Catalog No. A300-446A

GeneID 9031

Lot No. A300-446A-3

APPLICATIONS	WB, IP, IHC
SPECIES REACTIVITY	Human
PRESUMED REACTIVITY	Based on 100% sequence identity, this antibody is predicted to react with Mouse
AMOUNT	100 µl
CONCENTRATION	200 µg/ml
STORAGE/SHELF LIFE	2 – 8°C / 1 year from date of receipt
PHYSICAL STATE	Liquid
BUFFER	Tris-buffered Saline containing 0.1% BSA and 0.09% Sodium Azide
ISOTYPE	IgG
ORIGIN	USA

PRODUCTION PROCEDURES Antibody was affinity purified using an epitope specific to WSTF immobilized on solid support.

The epitope recognized by A300-446A maps to a region between residues 1 and 50 of human Williams Syndrome Transcription Factor using the numbering given in SwissProt entry Q9UIG0 (GeneID 9031).

Immunoglobulin concentration was determined by extinction coefficient: absorbance at 280 nm of 1.4 equals 1.0 mg of IgG.

APPLICATIONS Centrifuge tube to remove product from lid. Optimal working dilutions should be determined experimentally by the investigator. Prepare working dilution immediately before use.

Western Blot 1:2,000 – 1:10,000

Immunoprecipitation 2 – 10 µg/mg lysate

Immunohistochemistry 1:100 to 1:500. Epitope retrieval with citrate buffer pH6.0 is recommended for FFPE tissue sections.

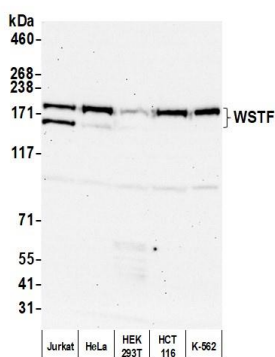
IHC HUMAN CONTROLS Breast Carcinoma, Non-Small Cell Lung Cancer, Placenta, Small Cell Lung Cancer

ADDITIONAL INFO <https://www.bethyl.com/product/A300-446A>

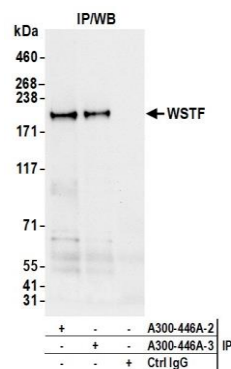
Use the link above to view SDS, a current list of citations, and other product specific information.

IP-western blot protocol: https://www.bethyl.com/content/protocol_IP_WB

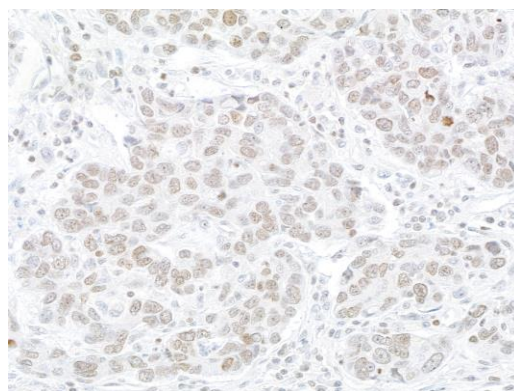
This document certifies that this product has met all of the quality control standards defined by Bethyl Laboratories, Inc.
Michael Spencer, PhD Date: April 25, 2022



Detection of human WSTF by western blot. *Samples:* Whole cell lysate (50 µg) from Jurkat, HeLa, HEK293T, HCT 116, and K-562 cells prepared using NETN lysis buffer. *Antibody:* Affinity purified rabbit anti-WSTF antibody (A300-446A lot 3) used for WB at 0.1 µg/ml. *Detection:* Chemiluminescence with an exposure time of 30 seconds.



Detection of human WSTF by western blot of immunoprecipitates. *Samples:* Whole cell lysate (1.0 mg per IP reaction; 20% of IP loaded) from K-562 cells prepared using NETN lysis buffer. *Antibodies:* Affinity purified rabbit anti-WSTF antibody (A300-446A lot 3) used for IP at 6 µg per reaction. WSTF was also immunoprecipitated by a previous lot of this antibody (A300-446A lot 2). For blotting immunoprecipitated WSTF, A300-446A was used at 0.2 µg/ml. *Detection:* Chemiluminescence with an exposure time of 10 seconds.



Detection of human WSTF by immunohistochemistry. *Sample:* FFPE section of human breast cancer. *Antibodies:* Affinity purified rabbit anti-WSTF (A300-446A Lot 3) used at a dilution of 1:200 (1 µg/ml). *Detection:* DAB