



# SZABO SCANDIC

Part of Europa Biosite

## Produktinformation



Forschungsprodukte & Biochemikalien



Zellkultur & Verbrauchsmaterial



Diagnostik & molekulare Diagnostik



Laborgeräte & Service

Weitere Information auf den folgenden Seiten!  
See the following pages for more information!



### Lieferung & Zahlungsart

siehe unsere [Liefer- und Versandbedingungen](#)

### Zuschläge

- Mindermengenzuschlag
- Trockeneiszuschlag
- Gefahrgutzuschlag
- Expressversand

### SZABO-SCANDIC HandelsgmbH

Quellenstraße 110, A-1100 Wien

T. +43(0)1 489 3961-0

F. +43(0)1 489 3961-7

[mail@szabo-scandic.com](mailto:mail@szabo-scandic.com)

[www.szabo-scandic.com](http://www.szabo-scandic.com)

[linkedin.com/company/szaboscandic](https://www.linkedin.com/company/szaboscandic) 

# RecQ1 Antibody

Rabbit Polyclonal

Antigen Affinity Purified

Protein ID P46063

Catalog No. A300-447A

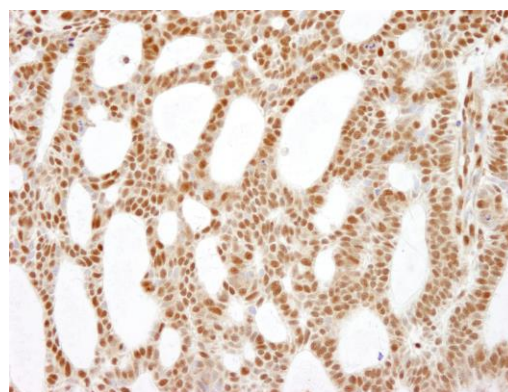
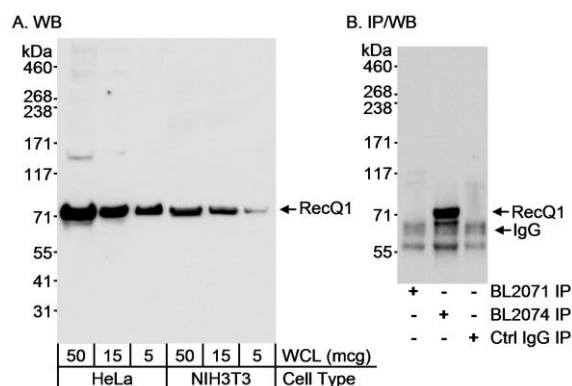
GeneID 5965

Lot No. A300-447A-1



<b>APPLICATIONS</b>	WB, IHC						
<b>SPECIES REACTIVITY</b>	Human, Mouse						
<b>PRESUMED REACTIVITY</b>	Based on 100% sequence identity, this antibody is predicted to react with Orangutan						
<b>AMOUNT</b>	100 µl						
<b>CONCENTRATION</b>	200 µg/ml						
<b>STORAGE/SHELF LIFE</b>	2 - 8° C / 1 year from date of receipt						
<b>PHYSICAL STATE</b>	Liquid						
<b>BUFFER</b>	Tris-buffered Saline containing 0.1% BSA and 0.09% Sodium Azide						
<b>ISOTYPE</b>	IgG						
<b>ORIGIN</b>	USA						
<b>PRODUCTION PROCEDURES</b>	<p>Antibody was affinity purified using an epitope specific to RecQ1 immobilized on solid support.</p> <p>The epitope recognized by A300-447A maps to a region between residues 1 and 50 of human RecQ protein-like (DNA helicase Q1-like) 1 using the numbering given in Swiss-Prot entry P46063 (GeneID 5965).</p> <p>Immunoglobulin concentration was determined by extinction coefficient: absorbance at 280 nm of 1.4 equals 1.0 mg of IgG.</p>						
<b>APPLICATIONS</b>	<p>Centrifuge tube to remove product from lid. Optimal working dilutions should be determined experimentally by the investigator. Prepare working dilution immediately before use.</p> <table><tr><td>Western Blot</td><td>1:1,000 - 1:10,000</td></tr><tr><td>Immunoprecipitation</td><td>Not recommended. A300-450A is recommended for IP. In initial tests, A300-447A was less efficient.</td></tr><tr><td>Immunohistochemistry</td><td>1:100 - 1:500. Epitope retrieval with citrate buffer pH 6.0 is recommended for FFPE tissue sections.</td></tr></table>	Western Blot	1:1,000 - 1:10,000	Immunoprecipitation	Not recommended. A300-450A is recommended for IP. In initial tests, A300-447A was less efficient.	Immunohistochemistry	1:100 - 1:500. Epitope retrieval with citrate buffer pH 6.0 is recommended for FFPE tissue sections.
Western Blot	1:1,000 - 1:10,000						
Immunoprecipitation	Not recommended. A300-450A is recommended for IP. In initial tests, A300-447A was less efficient.						
Immunohistochemistry	1:100 - 1:500. Epitope retrieval with citrate buffer pH 6.0 is recommended for FFPE tissue sections.						
<b>APPLICATION NOTES</b>	Western blot of lysates performed using standard western blot reagents and 4-8% SDS-PAGE.						
<b>IHC HUMAN CONTROLS</b>	Breast Carcinoma, Ovarian Carcinoma, Testicular Seminoma						
<b>ADDITIONAL INFO</b>	<p><a href="https://www.bethyl.com/product/A300-447A">https://www.bethyl.com/product/A300-447A</a></p> <p>Use the link above to view SDS, a current list of citations, and other product specific information.</p>						

This document certifies that this product has met all of the quality control standards defined by Bethyl Laboratories, Inc.  
Eric McIntush, PhD | Chief Scientific Officer Date: June 21, 2019



**Detection of human and mouse RecQ1 by western blot and human RecQ1 by immunoprecipitation.** *Samples:* A) Whole cell lysate (5, 15 and 50 µg) from human (HeLa) and mouse (NIH 3T3) cells. B) Whole cell lysate (1 mg) from HeLa cells. *Antibodies:* Affinity purified rabbit anti-RecQ1 antibody BL2071 (Cat. No. A300-447A) used at 0.1 µg/ml (A) and 1 µg/ml (B) for WB and at 3 µg/mg lysate for IP (B). RecQ1 was successfully immunoprecipitated using rabbit anti-RecQ1 antibody BL2074 (Cat. No. A300-450A) at 3 µg/mg lysate. *Detection:* Chemiluminescence with an exposure time of two seconds (A and B).

**Detection of human RecQ1 by immunohistochemistry.** *Sample:* FFPE section of human skin basal cell carcinoma. *Antibody:* Affinity purified rabbit anti-RecQ1 (Cat. No. A300-447A Lot1) used at a dilution of 1:200 (1 µg/ml). *Detection:* DAB