



SZABO SCANDIC

Part of Europa Biosite

Produktinformation



Forschungsprodukte & Biochemikalien



Zellkultur & Verbrauchsmaterial



Diagnostik & molekulare Diagnostik



Laborgeräte & Service

Weitere Information auf den folgenden Seiten!
See the following pages for more information!



Lieferung & Zahlungsart

siehe unsere [Liefer- und Versandbedingungen](#)

Zuschläge

- Mindermengenzuschlag
- Trockeneiszuschlag
- Gefahrgutzuschlag
- Expressversand

SZABO-SCANDIC HandelsgmbH

Quellenstraße 110, A-1100 Wien

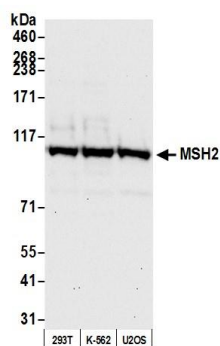
T. +43(0)1 489 3961-0

F. +43(0)1 489 3961-7

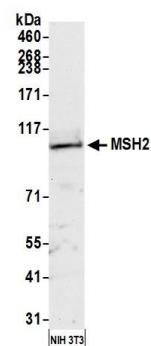
mail@szabo-scandic.com

www.szabo-scandic.com

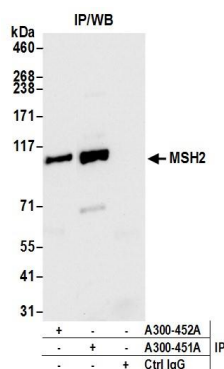
[linkedin.com/company/szaboscandic](https://www.linkedin.com/company/szaboscandic) 



Detection of human MSH2 by western blot. *Samples:* Whole cell lysate (50 μ g) from HEK293T, K-562, and U2OS cells prepared using NETN lysis buffer. *Antibody:* Affinity purified Rabbit anti-MSH2 antibody A300-451A (lot A300-451A-3) used for WB at 0.04 μ g/ml. *Detection:* Chemiluminescence with an exposure time of 10 seconds.



Detection of mouse MSH2 by western blot. *Samples:* Whole cell lysate (50 μ g) from NIH 3T3 cells prepared using NETN lysis buffer. *Antibody:* Affinity purified Rabbit anti-MSH2 antibody A300-451A (lot A300-451A-3) used for WB at 0.04 μ g/ml. *Detection:* Chemiluminescence with an exposure time of 75 seconds.



Detection of human MSH2 by western blot of immunoprecipitates. *Samples:* Whole cell lysate (1.0 mg per IP reaction; 20% of IP loaded) from HEK293T cells prepared using NETN lysis buffer. *Antibodies:* Affinity purified Rabbit anti-MSH2 antibody A300-451A (lot A300-451A-3) used for IP at 6 μ g per reaction. MSH2 was also immunoprecipitated by rabbit anti-MSH2 antibody A300-452A. For blotting immunoprecipitated MSH2, A300-451A was used at 0.04 μ g/ml. *Detection:* Chemiluminescence with an exposure time of 30 seconds.