



SZABO SCANDIC

Part of Europa Biosite

Produktinformation



Forschungsprodukte & Biochemikalien



Zellkultur & Verbrauchsmaterial



Diagnostik & molekulare Diagnostik



Laborgeräte & Service

Weitere Information auf den folgenden Seiten!
See the following pages for more information!



Lieferung & Zahlungsart

siehe unsere [Liefer- und Versandbedingungen](#)

Zuschläge

- Mindermengenzuschlag
- Trockeneiszuschlag
- Gefahrgutzuschlag
- Expressversand

SZABO-SCANDIC HandelsgmbH

Quellenstraße 110, A-1100 Wien

T. +43(0)1 489 3961-0

F. +43(0)1 489 3961-7

mail@szabo-scandic.com

www.szabo-scandic.com

[linkedin.com/company/szaboscandic](https://www.linkedin.com/company/szaboscandic) 

MSH2 Antibody

Rabbit Polyclonal

Antigen Affinity Purified

Protein ID P43246

Catalog No. A300-452A

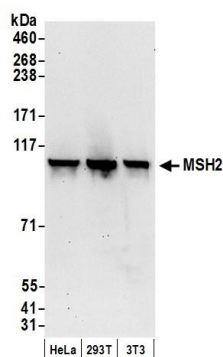
GeneID 4436

Lot No. A300-452A-2



APPLICATIONS	WB, IP, IHC
SPECIES REACTIVITY	Human, Mouse
AMOUNT	100 µl
CONCENTRATION	1000 µg/ml
STORAGE/SHELF LIFE	2 - 8° C / 1 year from date of receipt
PHYSICAL STATE	Liquid
BUFFER	Tris-citrate/phosphate buffer, pH 7 to 8 containing 0.09% Sodium Azide
ISOTYPE	IgG
ORIGIN	USA
PRODUCTION PROCEDURES	Antibody was affinity purified using an epitope specific to MSH2 immobilized on solid support. The epitope recognized by A300-452A maps to a region between residue 875 and the C-terminus (residue 934) of human mutS homolog 2 using the numbering given in Swiss-Prot entry P43246 (GeneID 4436). Immunoglobulin concentration was determined by extinction coefficient: absorbance at 280 nm of 1.4 equals 1.0 mg of IgG.
APPLICATIONS	Centrifuge tube to remove product from lid. Optimal working dilutions should be determined experimentally by the investigator. Prepare working dilution immediately before use. Western Blot 1:2,000 - 1:10,000 Immunoprecipitation 2 - 10 µg/mg lysate Immunohistochemistry 1:1,000 - 1:5,000. Epitope retrieval with citrate buffer pH 6.0 is recommended for FFPE tissue sections.
APPLICATION NOTES	Western blot of immunoprecipitates performed using Normal Pig Serum (Cat. No. S100-020), Goat anti-Rabbit Light Chain HRP Conjugate (Cat. No. A120-113P) and 4-8% SDS-PAGE (link to IP-western blot protocol in Additional Info section below). Western blot of lysates performed using standard western blot reagents and 4-8% SDS-PAGE.
IHC HUMAN CONTROLS	Breast Carcinoma, Metastatic Lymph Node, Ovarian Carcinoma, Small Cell Lung Cancer, Testicular Seminoma
IHC MOUSE CONTROLS	Renal Cell Carcinoma, Squamous Cell Carcinoma
ADDITIONAL INFO	https://www.bethyl.com/product/A300-452A Use the link above to view SDS, a current list of citations, and other product specific information. IP-western blot protocol: https://www.bethyl.com/content/protocol_IP_WB

This document certifies that this product has met all of the quality control standards defined by Bethyl Laboratories, Inc.
Eric McIntush, PhD | Chief Scientific Officer Date: June 21, 2019

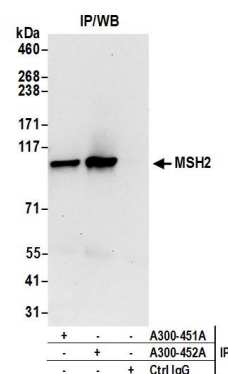


Detection of human and mouse MSH2 by western blot.

Samples: Whole cell lysate (50 µg) from HeLa, HEK293T, and mouse NIH 3T3 cells prepared using NETN lysis buffer.

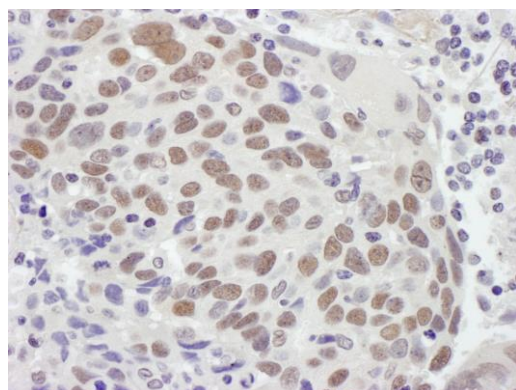
Antibody: Affinity purified rabbit anti-MSH2 antibody A300-452A (lot A300-452A-2) used for WB at 0.1 µg/ml.

Detection: Chemiluminescence with an exposure time of 30 seconds.



Detection of human MSH2 by western blot of immunoprecipitates.

Samples: Whole cell lysate (0.5 or 1.0 mg per IP reaction; 20% of IP loaded) from HeLa cells prepared using NETN lysis buffer. *Antibodies:* Affinity purified rabbit anti-MSH2 antibody A300-452A (lot A300-452A-2) used for IP at 6 µg per reaction. MSH2 was also immunoprecipitated by rabbit anti-MSH2 antibody A300-451A. For blotting immunoprecipitated MSH2, A300-452A was used at 1 µg/ml. *Detection:* Chemiluminescence with an exposure time of 30 seconds.

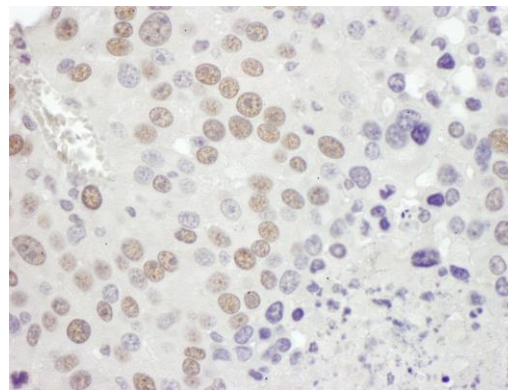


Detection of human MSH2 by immunohistochemistry.

Sample: FFPE section of human ovarian carcinoma.

Antibody: Affinity purified rabbit anti-MSH2 (Cat. No. A300-452A Lot2) used at a dilution of 1:1,000 (1 µg/ml).

Detection: DAB



Detection of mouse MSH2 by immunohistochemistry.

Sample: FFPE section of mouse renal cell carcinoma.

Antibody: Affinity purified rabbit anti-MSH2 (Cat. No. A300-452A Lot2) used at a dilution of 1:1,000 (1 µg/ml).

Detection: DAB