



SZABO SCANDIC

Part of Europa Biosite

Produktinformation



Forschungsprodukte & Biochemikalien



Zellkultur & Verbrauchsmaterial



Diagnostik & molekulare Diagnostik



Laborgeräte & Service

Weitere Information auf den folgenden Seiten!
See the following pages for more information!



Lieferung & Zahlungsart

siehe unsere [Liefer- und Versandbedingungen](#)

Zuschläge

- Mindermengenzuschlag
- Trockeneiszuschlag
- Gefahrgutzuschlag
- Expressversand

SZABO-SCANDIC HandelsgmbH

Quellenstraße 110, A-1100 Wien

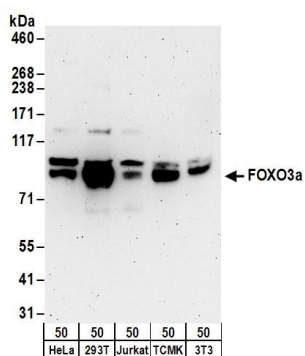
T. +43(0)1 489 3961-0

F. +43(0)1 489 3961-7

mail@szabo-scandic.com

www.szabo-scandic.com

[linkedin.com/company/szaboscandic](https://www.linkedin.com/company/szaboscandic) 

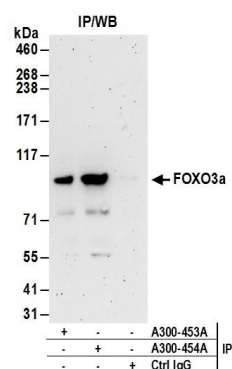


Detection of human and mouse FOXO3a by western blot.

Samples: Whole cell lysate (50 µg) from HeLa, HEK293T, Jurkat, mouse TCMK-1, and mouse NIH 3T3 cells.

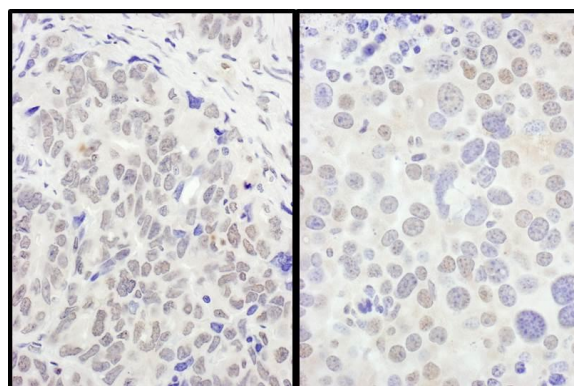
Antibodies: Affinity purified rabbit anti-FOXO3a antibody A300-454A (lot A300-454A-2) used for WB at 0.1 µg/ml.

Detection: Chemiluminescence with an exposure time of 3 minutes.



Detection of human FOXO3a by western blot of immunoprecipitates.

Samples: Whole cell lysate (1 mg for IP; 20% of IP loaded) from MCF-7 cells. *Antibodies:* Affinity purified rabbit anti-FOXO3a antibody A300-454A (lot A300-454A-2) used for IP at 6 µg/mg lysate. FOXO3a was also immunoprecipitated by rabbit anti-FOXO3a antibody A300-453A. For blotting immunoprecipitated FOXO3a, A300-454A was used at 1 µg/ml. *Detection:* Chemiluminescence with an exposure time of 3 minutes.



Detection of human and mouse FOXO3a by immunohistochemistry. *Sample:* FFPE section of human ovarian carcinoma (left) and mouse renal cell carcinoma (right). *Antibody:* Affinity purified rabbit anti-FOXO3a (Cat. No. A300-454A Lot2) used at a dilution of 1:1,000 (1 µg/ml). *Detection:* DAB