



SZABO SCANDIC

Part of Europa Biosite

Produktinformation



Forschungsprodukte & Biochemikalien



Zellkultur & Verbrauchsmaterial



Diagnostik & molekulare Diagnostik



Laborgeräte & Service

Weitere Information auf den folgenden Seiten!
See the following pages for more information!



Lieferung & Zahlungsart

siehe unsere [Liefer- und Versandbedingungen](#)

Zuschläge

- Mindermengenzuschlag
- Trockeneiszuschlag
- Gefahrgutzuschlag
- Expressversand

SZABO-SCANDIC HandelsgmbH

Quellenstraße 110, A-1100 Wien

T. +43(0)1 489 3961-0

F. +43(0)1 489 3961-7

mail@szabo-scandic.com

www.szabo-scandic.com

[linkedin.com/company/szaboscandic](https://www.linkedin.com/company/szaboscandic) 

ROCK1 Antibody

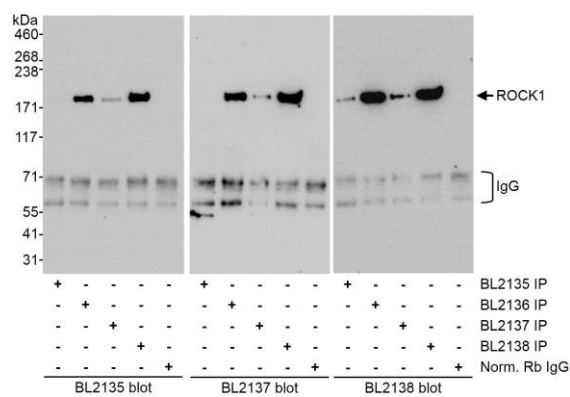
Rabbit Polyclonal

Antigen Affinity Purified Protein ID Q13464
Catalog No. A300-455A-T GeneID 6093
Lot No. A300-455A-T-1



APPLICATIONS	IP
SPECIES REACTIVITY	Human
PRESUMED REACTIVITY	Based on 100% sequence identity, this antibody is predicted to react with Chimpanzee
AMOUNT	10 µl
CONCENTRATION	1000 µg/ml
STORAGE/SHELF LIFE	2 - 8° C / 1 year from date of receipt
PHYSICAL STATE	Liquid
BUFFER	Tris-citrate/phosphate buffer, pH 7 to 8 containing 0.09% Sodium Azide
ISOTYPE	IgG
ORIGIN	USA
PRODUCTION PROCEDURES	<p>Antibody was affinity purified using an epitope specific to ROCK1 immobilized on solid support.</p> <p>The epitope recognized by A300-455A-T maps to a region between residues 400 and 450 of human Rho-associated, coiled-coil containing protein kinase 1 using the numbering given in Swiss-Prot entry Q13464 (GeneID 6093).</p> <p>Immunoglobulin concentration was determined by extinction coefficient: absorbance at 280 nm of 1.4 equals 1.0 mg of IgG.</p>
APPLICATIONS	<p>Centrifuge tube to remove product from lid. Optimal working dilutions should be determined experimentally by the investigator. Prepare working dilution immediately before use.</p> <p>Western Blot Not recommended. Use rabbit anti-ROCK1 antibody A300-456A-T or A300-457A-T.</p> <p>Immunoprecipitation 2 - 5 µg/mg lysate</p>
APPLICATION NOTES	Western blot of immunoprecipitates performed using Normal Pig Serum (Cat. No. S100-020), Goat anti-Rabbit Light Chain HRP Conjugate (Cat. No. A120-113P) and 4-8% SDS-PAGE (link to IP-western blot protocol in Additional Info section below).
ADDITIONAL INFO	<p>https://www.bethyl.com/product/A300-455A-T</p> <p>Use the link above to view SDS, a current list of citations, and other product specific information.</p> <p>IP-western blot protocol: https://www.bethyl.com/content/protocol_IP_WB</p>

This document certifies that this product has met all of the quality control standards defined by Bethyl Laboratories, Inc.
Eric McIntush, PhD | Chief Scientific Officer Date: June 21, 2019



Detection of human ROCK1 by western blot of immunoprecipitates. *Samples:* Whole cell lysate (1 mg/IP; 1/4 of IP loaded/lane) from HeLa cells. *Antibody:* Affinity purified rabbit anti-ROCK1 antibodies BL2135, BL2136 (Cat. No. A300-455A-T), BL2137 (Cat. No. A300-456A) and BL2138 (A300-457A) used at 3 μ g/mg lysate for IP. Normal rabbit IgG was used as a control for immunoprecipitation. ROCK1 was blotted with BL2135, BL2137, or BL2138 (each at 1 μ g/ml). *Detection:* Chemiluminescence with exposure times of 10 to 30 seconds.