



# SZABO SCANDIC

Part of Europa Biosite

## Produktinformation



Forschungsprodukte & Biochemikalien



Zellkultur & Verbrauchsmaterial



Diagnostik & molekulare Diagnostik



Laborgeräte & Service

Weitere Information auf den folgenden Seiten!  
See the following pages for more information!



### Lieferung & Zahlungsart

siehe unsere [Liefer- und Versandbedingungen](#)

### Zuschläge

- Mindermengenzuschlag
- Trockeneiszuschlag
- Gefahrgutzuschlag
- Expressversand

### SZABO-SCANDIC HandelsgmbH

Quellenstraße 110, A-1100 Wien

T. +43(0)1 489 3961-0

F. +43(0)1 489 3961-7

[mail@szabo-scandic.com](mailto:mail@szabo-scandic.com)

[www.szabo-scandic.com](http://www.szabo-scandic.com)

[linkedin.com/company/szaboscandic](https://www.linkedin.com/company/szaboscandic) 

# DDB1 Antibody

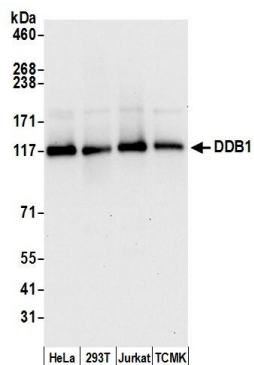
Rabbit Polyclonal

Antigen Affinity Purified Protein ID Q13289  
Catalog No. A300-462A-T GeneID 1642  
Lot No. A300-462A-T-3



|                              |  |
|------------------------------|--|
| <b>APPLICATIONS</b>          | WB, IP, IHC  |
| <b>SPECIES REACTIVITY</b>    | Human, Mouse   |
| <b>PRESUMED REACTIVITY</b>   | Based on 100% sequence identity, this antibody is predicted to react with Rat, X. laevis, Bovine and Orangutan   |
| <b>AMOUNT</b>                | 20 µl (2 blots)  |
| <b>CONCENTRATION</b>         | 100 µg/ml  |
| <b>STORAGE/SHELF LIFE</b>    | 2 - 8° C / 1 year from date of receipt   |
| <b>PHYSICAL STATE</b>        | Liquid   |
| <b>BUFFER</b>                | Tris-buffered Saline containing 0.1% BSA and 0.09% Sodium Azide  |
| <b>ISOTYPE</b>               | IgG  |
| <b>ORIGIN</b>                | USA  |
| <b>PRODUCTION PROCEDURES</b> | Antibody was affinity purified using an epitope specific to DDB1 immobilized on solid support.<br><br>The epitope recognized by A300-462A-T maps to a region between residue 1100 and the C-terminus (residue 1140) of human damage-specific DNA binding protein 1 using the numbering given in TrEMBL entry Q13289 (GeneID 1642).   |
| <b>APPLICATIONS</b>          | Centrifuge tube to remove product from lid. Optimal working dilutions should be determined experimentally by the investigator. Prepare working dilution immediately before use.<br><br>Western Blot 1:1000<br><br>Immunoprecipitation The antibody contained within A300-462A-T has been qualified for use in immunoprecipitation; however, we recommend using the alternative formulation of this antibody found as product A300-462A.<br><br>Immunohistochemistry 1:250 - 1:1,000. Epitope retrieval with citrate buffer pH 6.0 is recommended for FFPE tissue sections. |
| <b>APPLICATION NOTES</b>     | Western blot of immunoprecipitates performed using Normal Pig Serum (Cat. No. S100-020), Goat anti-Rabbit Light Chain HRP Conjugate (Cat. No. A120-113P) and 4-8% SDS-PAGE (link to IP-western blot protocol in Additional Info section below).<br><br>Western blot of lysates performed using standard western blot reagents and 4-8% SDS-PAGE.   |
| <b>ADDITIONAL INFO</b>       | <a href="https://www.bethyl.com/product/A300-462A-T">https://www.bethyl.com/product/A300-462A-T</a><br>Use the link above to view SDS, a current list of citations, and other product specific information.<br>IP-western blot protocol: <a href="https://www.bethyl.com/content/protocol_IP_WB">https://www.bethyl.com/content/protocol_IP_WB</a>   |

This document certifies that this product has met all of the quality control standards defined by Bethyl Laboratories, Inc.  
Eric McIntush, PhD | Chief Scientific Officer Date: June 21, 2019

**Detection of human and mouse DDB1 by western blot.**

*Samples:* Whole cell lysate (15 µg) from HeLa, HEK293T, Jurkat, and mouse TCMK-1 cells prepared using NETN lysis buffer. *Antibody:* Affinity purified rabbit anti-DDB1 antibody A300-462A-T (lot A300-462A-T-3) used for WB at 1:1000. *Detection:* Chemiluminescence with an exposure time of 10 seconds.