



# SZABO SCANDIC

Part of Europa Biosite

## Produktinformation



Forschungsprodukte & Biochemikalien



Zellkultur & Verbrauchsmaterial



Diagnostik & molekulare Diagnostik



Laborgeräte & Service

Weitere Information auf den folgenden Seiten!  
See the following pages for more information!



### Lieferung & Zahlungsart

siehe unsere [Liefer- und Versandbedingungen](#)

### Zuschläge

- Mindermengenzuschlag
- Trockeneiszuschlag
- Gefahrgutzuschlag
- Expressversand

### SZABO-SCANDIC HandelsgmbH

Quellenstraße 110, A-1100 Wien

T. +43(0)1 489 3961-0

F. +43(0)1 489 3961-7

[mail@szabo-scandic.com](mailto:mail@szabo-scandic.com)

[www.szabo-scandic.com](http://www.szabo-scandic.com)

[linkedin.com/company/szaboscandic](https://www.linkedin.com/company/szaboscandic) 

# MST1 /STK4 Antibody

Rabbit Polyclonal

Antigen Affinity Purified	RefSeq ID	NP_006273.1
Catalog No. A300-465A-T	Uniprot ID	Q13043
Lot No. 1	GeneID	6789

---

<b>APPLICATIONS</b>	WB, IP
<b>SPECIES REACTIVITY</b>	Human, Mouse
<b>PRESUMED REACTIVITY</b>	Based on 100% sequence identity, this antibody is predicted to react with Monkey
<b>AMOUNT</b>	10 µl
<b>CONCENTRATION</b>	1000 µg/ml
<b>STORAGE/SHELF LIFE</b>	2 – 8°C / 1 year from date of receipt
<b>PHYSICAL STATE</b>	Liquid
<b>BUFFER</b>	Tris-citrate/phosphate buffer, pH 7 to 8 containing 0.09% Sodium Azide
<b>ISOTYPE</b>	IgG
<b>ORIGIN</b>	USA
<b>PRODUCTION PROCEDURES</b>	Antibody was affinity purified using an epitope specific to MST1 /STK4 immobilized on solid support.

The epitope recognized by A300-465A maps to a region between residues 375 and 425 of human Mammalian Sterile 20-like 1 (Serine/Threonine Kinase 4) using the numbering given in Swiss Prot entry Q13043 (GeneID 6789).

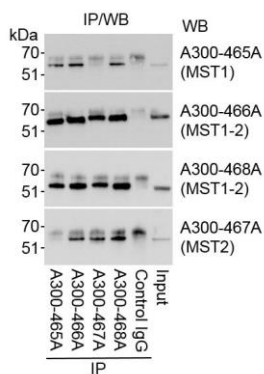
Immunoglobulin concentration was determined using Beer's Law where 1mg/mL IgG has an A280 of 1.4.

**APPLICATIONS** Centrifuge tube to remove product from lid. Optimal working dilutions should be determined experimentally by the investigator. Prepare working dilution immediately before use.

Western Blot	1:500 – 1:2500
Immunoprecipitation	6 µg/mg lysate

**ADDITIONAL INFO** <https://www.fortislife.com/p/A300-465A-T>  
Use the link above to view SDS, a current list of citations, and other product specific information.

This document certifies that this product has met all of the quality control standards defined by Bethyl Laboratories, Inc.  
Michael Spencer, PhD Date: January 31, 2024



**Detection of MST1 and MST2 by western blot of immunoprecipitates.** *Samples:* Whole cell lysate (1 mg/IP reaction; 1/4 of reaction loaded/gel) from HeLa cells. *Antibodies:* Affinity purified rabbit anti-MST1 antibody A300-465A (lot A300-465A-1) used for IP at 3  $\mu$ g/mg lysate. MST1 and MST2 were simultaneously immunoprecipitated using MST1-2 antibodies A300-466A and A300-468A. MST2 was immunoprecipitated using MST2 antibody A300-467A. *Detection:* Chemiluminescence with exposure time of 3 seconds. A300-465A is specific for MST1 and A300-467A is specific for MST2 as determined by reciprocal IP/WB.

**Detection of human and mouse MST1 by western blot.** *Samples:* Whole cell lysate from HeLa (5, 15 and 50  $\mu$ g), Ramos (R, 50  $\mu$ g) and mouse NIH 3T3 (M, 50  $\mu$ g) cells. *Antibodies:* Affinity purified rabbit anti-MST1 antibody A300-465A (lot A300-465A-1) used for WB at 1  $\mu$ g/ml. *Detection:* Chemiluminescence with exposure time of 30 seconds.