



# SZABO SCANDIC

Part of Europa Biosite

## Produktinformation



Forschungsprodukte & Biochemikalien



Zellkultur & Verbrauchsmaterial



Diagnostik & molekulare Diagnostik



Laborgeräte & Service

Weitere Information auf den folgenden Seiten!  
See the following pages for more information!



### Lieferung & Zahlungsart

siehe unsere [Liefer- und Versandbedingungen](#)

### Zuschläge

- Mindermengenzuschlag
- Trockeneiszuschlag
- Gefahrgutzuschlag
- Expressversand

### SZABO-SCANDIC HandelsgmbH

Quellenstraße 110, A-1100 Wien

T. +43(0)1 489 3961-0

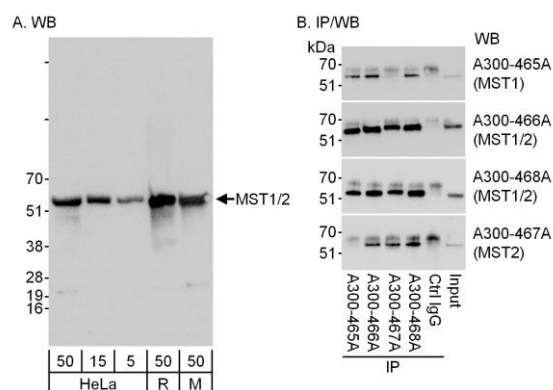
F. +43(0)1 489 3961-7

[mail@szabo-scandic.com](mailto:mail@szabo-scandic.com)

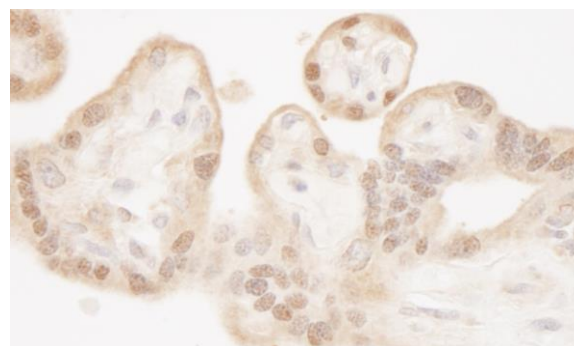
[www.szabo-scandic.com](http://www.szabo-scandic.com)

[linkedin.com/company/szaboscandic](https://www.linkedin.com/company/szaboscandic) 





**Detection of MST1 and MST2 by western blot and immunoprecipitation.** *Samples:* A) Whole cell lysate from HeLa (5, 15 and 50 µg), Ramos (R, 50 µg) and mouse NIH 3T3 (M, 50 µg) cells. B) Whole cell lysate (1 mg/IP reaction; 1/4 of reaction loaded/gel) from HeLa cells. *Antibodies:* Affinity purified rabbit anti-MST1/2 antibody A300-466A used at 0.1 µg/ml for WB (A and B) and 3 µg/mg lysate for IP (B). MST1 was immunoprecipitated using MST1 antibody A300-465A. MST2 was immunoprecipitated using MST2 antibody A300-467A. MST1 and MST2 were simultaneously immunoprecipitated using MST1/2 antibodies A300-466A and A300-468A. *Detection:* Chemiluminescence with an exposure times of 3 seconds (A and B). A300-466A recognized MST1 in IP from A300-465A and MST2 in IP from A300-467A.



**Detection of human MST1 and MST2 by immunohistochemistry.** *Sample:* FFPE section of human placenta. *Antibody:* Affinity purified rabbit anti-MST1/2 (Cat. No. A300-466A Lot1) used at a dilution of 1:1,000 (1 µg/ml). *Detection:* DAB