



# SZABO SCANDIC

Part of Europa Biosite

## Produktinformation



Forschungsprodukte & Biochemikalien



Zellkultur & Verbrauchsmaterial



Diagnostik & molekulare Diagnostik



Laborgeräte & Service

Weitere Information auf den folgenden Seiten!  
See the following pages for more information!



### Lieferung & Zahlungsart

siehe unsere [Liefer- und Versandbedingungen](#)

### Zuschläge

- Mindermengenzuschlag
- Trockeneiszuschlag
- Gefahrgutzuschlag
- Expressversand

### SZABO-SCANDIC HandelsgmbH

Quellenstraße 110, A-1100 Wien

T. +43(0)1 489 3961-0

F. +43(0)1 489 3961-7

[mail@szabo-scandic.com](mailto:mail@szabo-scandic.com)

[www.szabo-scandic.com](http://www.szabo-scandic.com)

[linkedin.com/company/szaboscandic](https://www.linkedin.com/company/szaboscandic) 

# MST1-2/STK3-4 Antibody

Rabbit Polyclonal

Antigen Affinity Purified

Protein ID Q13188

Catalog No. A300-468A

GeneID 6788

Lot No. A300-468A-1



<b>APPLICATIONS</b>	WB, IP, IHC
<b>SPECIES REACTIVITY</b>	Human, Mouse
<b>PRESUMED REACTIVITY</b>	Based on 100% sequence identity, this antibody is predicted to react with Rat, Zebrafish and X. laevis
<b>AMOUNT</b>	100 µl
<b>CONCENTRATION</b>	1000 µg/ml
<b>STORAGE/SHELF LIFE</b>	2 - 8° C / 1 year from date of receipt
<b>PHYSICAL STATE</b>	Liquid
<b>BUFFER</b>	Tris-citrate/phosphate buffer, pH 7 to 8 containing 0.09% Sodium Azide
<b>ISOTYPE</b>	IgG
<b>ORIGIN</b>	USA
<b>PRODUCTION PROCEDURES</b>	Antibody was affinity purified using an epitope specific to MST1 and MST2 immobilized on solid support.

The epitope recognized by A300-468A maps to the C-terminus of human Mammalian Sterile 20-like 2 (Serine/Threonine Kinase 3) using the numbering given in Swiss Prot entry Q13188 (GeneID 6788). The epitope is highly conserved with MST1(STK4). Consequently, A300-468A also recognizes this homolog.

Immunoglobulin concentration was determined by extinction coefficient: absorbance at 280 nm of 1.4 equals 1.0 mg of IgG.

**APPLICATIONS** Centrifuge tube to remove product from lid. Optimal working dilutions should be determined experimentally by the investigator. Prepare working dilution immediately before use.

Western Blot	1:5,000 - 1:15,000
Immunoprecipitation	2 - 5 µg/mg lysate
Immunohistochemistry	1:500 - 1:2,000. Epitope retrieval with Tris-EDTA pH 9.0 is recommended for FFPE tissue sections.

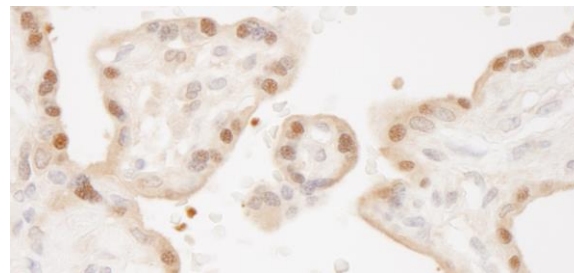
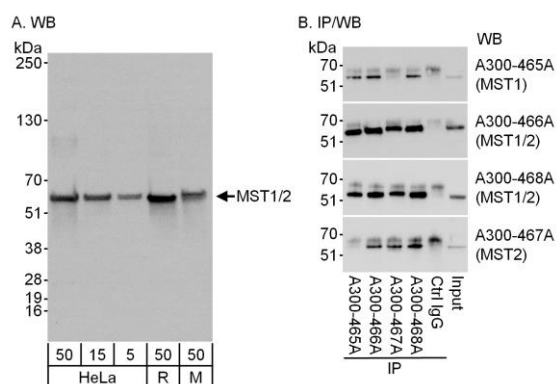
**APPLICATION NOTES** Western blot of immunoprecipitates performed using Normal Pig Serum (Cat. No. S100-020), Goat anti-Rabbit Light Chain HRP Conjugate (Cat. No. A120-113P) and 4-20% SDS-PAGE (link to IP-western blot protocol in Additional Info section below).

Western blot of lysates performed using standard western blot reagents and 4-20% SDS-PAGE.

**IHC HUMAN CONTROLS** Colon Carcinoma, Placenta

**ADDITIONAL INFO** <https://www.bethyl.com/product/A300-468A>  
Use the link above to view SDS, a current list of citations, and other product specific information.  
IP-western blot protocol: [https://www.bethyl.com/content/protocol\\_IP\\_WB](https://www.bethyl.com/content/protocol_IP_WB)

This document certifies that this product has met all of the quality control standards defined by Bethyl Laboratories, Inc.  
Eric McIntush, PhD | Chief Scientific Officer Date: June 21, 2019



**Detection of MST1 and MST2 by western blot and immunoprecipitation.** *Samples:* A) Whole cell lysate from HeLa (5, 15 and 50 µg), Ramos (R, 50 µg) and mouse NIH 3T3 (M, 50 µg) cells. B) Whole cell lysate (1 mg/IP reaction; 1/4 of reaction loaded/gel) from HeLa cells. *Antibodies:* Affinity purified rabbit anti-MST1/2 antibody A300-468A used at 0.1 µg/ml for WB (A and B) and 3 µg/mg lysate for IP. MST1 was immunoprecipitated using MST1 antibody A300-465A. MST2 was immunoprecipitated using MST2 antibody A300-467A. MST1 and MST2 were simultaneously immunoprecipitated using MST1/2 antibodies A300-466A and A300-468A. *Detection:* Chemiluminescence with an exposure times of 3 seconds (A and B). A300-468A recognized MST1 in IP from A300-465A and MST2 in IP from A300-467A.

**Detection of human MST1 and MST2 by immunohistochemistry.** *Sample:* FFPE section of human placenta. *Antibody:* Affinity purified rabbit anti-MST1/2 (Cat. No. A300-468A Lot1) used at a dilution of 1:1,000 (1 µg/ml). *Detection:* DAB