



SZABO SCANDIC

Part of Europa Biosite

Produktinformation



Forschungsprodukte & Biochemikalien



Zellkultur & Verbrauchsmaterial



Diagnostik & molekulare Diagnostik



Laborgeräte & Service

Weitere Information auf den folgenden Seiten!
See the following pages for more information!



Lieferung & Zahlungsart

siehe unsere [Liefer- und Versandbedingungen](#)

Zuschläge

- Mindermengenzuschlag
- Trockeneiszuschlag
- Gefahrgutzuschlag
- Expressversand

SZABO-SCANDIC HandelsgmbH

Quellenstraße 110, A-1100 Wien

T. +43(0)1 489 3961-0

F. +43(0)1 489 3961-7

mail@szabo-scandic.com

www.szabo-scandic.com

[linkedin.com/company/szaboscandic](https://www.linkedin.com/company/szaboscandic) 

CSE1 Antibody

Rabbit Polyclonal

Antigen Affinity Purified	RefSeq ID	NP_001307.2
Catalog No. A300-473A-T	Uniprot ID	P55060
Lot No. 2	GeneID	1434

APPLICATIONS	WB, IP
SPECIES REACTIVITY	Human, Mouse
PRESUMED REACTIVITY	Based on 100% sequence identity, this antibody is predicted to react with Bovine and Orangutan
AMOUNT	10 µl
CONCENTRATION	1000 µg/ml
STORAGE/SHELF LIFE	2 – 8°C / 1 year from date of receipt
PHYSICAL STATE	Liquid
BUFFER	Tris-citrate/phosphate buffer, pH 7 to 8 containing 0.09% Sodium Azide
ISOTYPE	IgG
ORIGIN	USA
PRODUCTION PROCEDURES	Antibody was affinity purified using an epitope specific to CSE1 immobilized on solid support.

The epitope recognized by A300-473A maps to a region between residues 900 and 950 of human Chromosome Segregation-1 using the numbering given in entry NP_001307.2 (GeneID 1434).

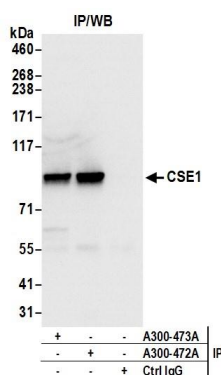
Immunoglobulin concentration was determined using Beer's Law where 1mg/mL IgG has an A280 of 1.4.

APPLICATIONS Centrifuge tube to remove product from lid. Optimal working dilutions should be determined experimentally by the investigator. Prepare working dilution immediately before use.

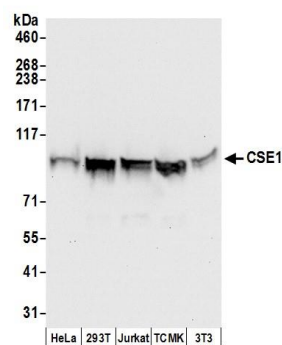
Western Blot	1:2000 – 1:10,000
Immunoprecipitation	6 µg/mg lysate

ADDITIONAL INFO <https://www.fortislife.com/p/A300-473A-T>
Use the link above to view SDS, a current list of citations, and other product specific information.

This document certifies that this product has met all of the quality control standards defined by Bethyl Laboratories, Inc.
Michael Spencer, PhD Date: January 31, 2024



Detection of human CSE1 by western blot of immunoprecipitates. *Samples:* Whole cell lysate (0.5 or 1.0 mg per IP reaction; 20% of IP loaded) from HEK293T cells prepared using NETN lysis buffer. *Antibody:* Affinity purified rabbit anti-CSE1 antibody A300-473A (lot A300-473A-2) used for IP at 6 μ g per reaction. CSE1 was also immunoprecipitated by rabbit anti-CSE1 antibody A300-472A. For blotting immunoprecipitated CSE1, A300-473A was used at 1 μ g/ml. *Detection:* Chemiluminescence with an exposure time of 3 seconds.



Detection of human and mouse CSE1 by western blot. *Samples:* Whole cell lysate (50 μ g) from HeLa, HEK293T, Jurkat, mouse TCMK-1, and mouse NIH 3T3 cells prepared using NETN lysis buffer. *Antibody:* Affinity purified rabbit anti-CSE1 antibody A300-473A (lot A300-473A-2) used for WB at 0.1 μ g/ml. *Detection:* Chemiluminescence with an exposure time of 10 seconds.