



# SZABO SCANDIC

Part of Europa Biosite

## Produktinformation



Forschungsprodukte & Biochemikalien



Zellkultur & Verbrauchsmaterial



Diagnostik & molekulare Diagnostik



Laborgeräte & Service

Weitere Information auf den folgenden Seiten!  
See the following pages for more information!



### Lieferung & Zahlungsart

siehe unsere [Liefer- und Versandbedingungen](#)

### Zuschläge

- Mindermengenzuschlag
- Trockeneiszuschlag
- Gefahrgutzuschlag
- Expressversand

### SZABO-SCANDIC HandelsgmbH

Quellenstraße 110, A-1100 Wien

T. +43(0)1 489 3961-0

F. +43(0)1 489 3961-7

[mail@szabo-scandic.com](mailto:mail@szabo-scandic.com)

[www.szabo-scandic.com](http://www.szabo-scandic.com)

[linkedin.com/company/szaboscandic](https://www.linkedin.com/company/szaboscandic) 

# DDX3 Antibody

Rabbit Polyclonal

Antigen Affinity Purified Protein ID NP\_001347.2

Catalog No. A300-474A GeneID 1654

Lot No. A300-474A-3

---

|                              |  |
|------------------------------|--|
| <b>APPLICATIONS</b>          | WB, IP, IHC  |
| <b>SPECIES REACTIVITY</b>    | Human, Mouse   |
| <b>AMOUNT</b>                | 100 µl   |
| <b>CONCENTRATION</b>         | 200 µg/ml  |
| <b>STORAGE/SHELF LIFE</b>    | 2 – 8°C / 1 year from date of receipt  |
| <b>PHYSICAL STATE</b>        | Liquid   |
| <b>BUFFER</b>                | Tris-buffered Saline containing 0.1% BSA and 0.09% Sodium Azide                                |
| <b>ISOTYPE</b>               | IgG  |
| <b>ORIGIN</b>                | USA  |
| <b>PRODUCTION PROCEDURES</b> | Antibody was affinity purified using an epitope specific to DDX3 immobilized on solid support. |

The epitope recognized by A300-474A maps to a region between residues 1 and 50 of human DEAD (Asp-Glu-Ala-Asp) box polypeptide 3 using the numbering given in entry NP\_001347.2 (GeneID 1654).

Immunoglobulin concentration was determined by extinction coefficient: absorbance at 280 nm of 1.4 equals 1.0 mg of IgG.

**APPLICATIONS** Centrifuge tube to remove product from lid. Optimal working dilutions should be determined experimentally by the investigator. Prepare working dilution immediately before use.

Western Blot 1:1,000 – 1:10,000

Immunoprecipitation 2 – 10 µg/mg lysate

Immunohistochemistry 1:200 to 1:1000. Epitope retrieval with citrate buffer pH6.0 is recommended for FFPE tissue sections.

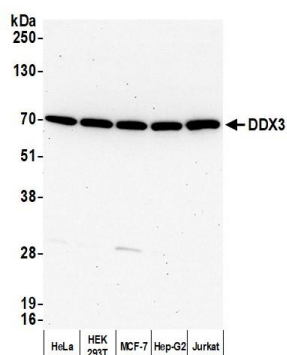
**IHC HUMAN CONTROLS** Non-Small Cell Lung Cancer, Ovarian Carcinoma, Small Cell Lung Cancer, Testicular Seminoma

**IHC MOUSE CONTROLS** Colon Carcinoma CT26, Plasmacytoma, Renal Cell Carcinoma, Teratoma

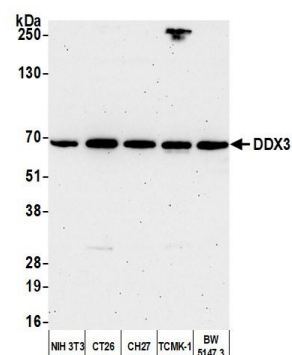
**ADDITIONAL INFO** <https://www.fortislife.com/p/A300-474A>

Use the link above to view SDS, a current list of citations, and other product specific information.

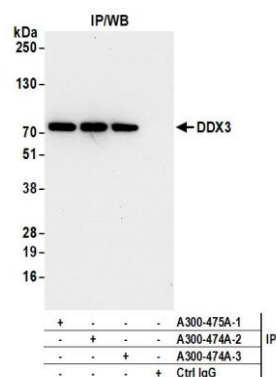
This document certifies that this product has met all of the quality control standards defined by Bethyl Laboratories, Inc.  
Michael Spencer, PhD Date: July 20, 2022



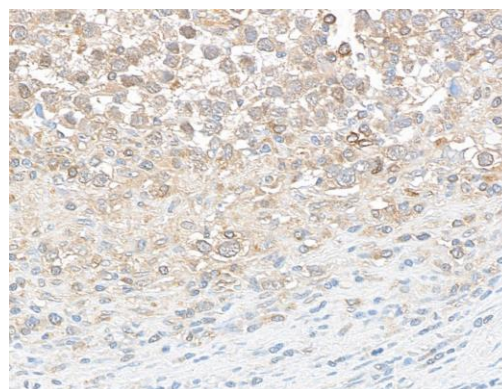
**Detection of human DDX3 by western blot. Samples:** Whole cell lysate (10  $\mu$ g) from HeLa, HEK293T, MCF-7, Hep-G2, and Jurkat cells prepared using NETN lysis buffer. **Antibody:** Affinity purified rabbit anti-DDX3 antibody A300-474A lot 3 used for WB at 0.04  $\mu$ g/ml. **Detection:** Chemiluminescence with an exposure time of 30 seconds.



**Detection of human DDX3 by western blot. Samples:** Whole cell lysate (10  $\mu$ g) from NIH 3T3, CT26, CH27, TCMK-1, and BW5147.3 cells prepared using NETN lysis buffer. **Antibody:** Affinity purified rabbit anti-DDX3 antibody (A300-474A lot 3) used for WB at 0.04  $\mu$ g/ml. **Detection:** Chemiluminescence with an exposure time of 75 seconds.



**Detection of human DDX3 by western blot of immunoprecipitates. Samples:** Whole cell lysate (1.0 mg per IP reaction; 5% of IP loaded) from HEK293T cells prepared using NETN lysis buffer. **Antibodies:** Affinity purified rabbit anti-DDX3 antibody (A300-474A lot 3) used for IP at 6  $\mu$ g per reaction. DDX3 was also immunoprecipitated by a previous lot of this antibody (A300-474A lot 2) and a second antibody against a different epitope of DDX3 (A300-475A). For blotting immunoprecipitated DDX3, A300-474A was used at 0.04  $\mu$ g/ml. **Detection:** Chemiluminescence with an exposure time of 10 seconds.



**Detection of human DDX3 by immunohistochemistry. Sample:** FFPE section of human testicular seminoma. **Antibody:** Affinity purified rabbit anti-DDX3 (A300-474A lot 3) used at a dilution of 1:200 (1  $\mu$ g/ml). **Detection:** DAB.