



# SZABO SCANDIC

Part of Europa Biosite

## Produktinformation



Forschungsprodukte & Biochemikalien



Zellkultur & Verbrauchsmaterial



Diagnostik & molekulare Diagnostik



Laborgeräte & Service

Weitere Information auf den folgenden Seiten!  
See the following pages for more information!



### Lieferung & Zahlungsart

siehe unsere [Liefer- und Versandbedingungen](#)

### Zuschläge

- Mindermengenzuschlag
- Trockeneiszuschlag
- Gefahrgutzuschlag
- Expressversand

### SZABO-SCANDIC HandelsgmbH

Quellenstraße 110, A-1100 Wien

T. +43(0)1 489 3961-0

F. +43(0)1 489 3961-7

[mail@szabo-scandic.com](mailto:mail@szabo-scandic.com)

[www.szabo-scandic.com](http://www.szabo-scandic.com)

[linkedin.com/company/szaboscandic](https://www.linkedin.com/company/szaboscandic) 

# RCH1 /KPNA2 Antibody

Rabbit Polyclonal

Antigen Affinity Purified

Protein ID NP\_002257.1

Catalog No. A300-484A

GeneID 3838

Lot No. A300-484A-3



<b>APPLICATIONS</b>	WB, IP, IHC
<b>SPECIES REACTIVITY</b>	Human, Mouse
<b>AMOUNT</b>	100 µl
<b>CONCENTRATION</b>	1000 µg/ml
<b>STORAGE/SHELF LIFE</b>	2 – 8° C / 1 year from date of receipt
<b>PHYSICAL STATE</b>	Liquid
<b>BUFFER</b>	Tris-citrate/phosphate buffer, pH 7 to 8 containing 0.09% Sodium Azide
<b>ISOTYPE</b>	IgG
<b>ORIGIN</b>	USA
<b>PRODUCTION PROCEDURES</b>	Antibody was affinity purified using an epitope specific to RCH1 /KPNA2 immobilized on solid support.

The epitope recognized by A300-484A maps to a region between residue 475 and the C-terminus (residue 529) of human RAG cohort 1 (Karyopherin Alpha 2) using the numbering given in entry NP\_002257.1 (GeneID 3838).

Immunoglobulin concentration was determined by extinction coefficient: absorbance at 280 nm of 1.4 equals 1.0 mg of IgG.

**APPLICATIONS** Centrifuge tube to remove product from lid. Optimal working dilutions should be determined experimentally by the investigator. Prepare working dilution immediately before use.

Western Blot 1:10,000 – 1:25,000

Immunoprecipitation 2 – 10 µg/mg lysate

Immunohistochemistry 1:1,000 to 1:5,000. Epitope retrieval with citrate buffer pH6.0 is recommended for FFPE tissue sections.

**APPLICATION NOTES** Western blot of immunoprecipitates performed using Normal Pig Serum (Cat. No. S100-020), Goat anti-Rabbit Light Chain HRP Conjugate (Cat. No. A120-113P) and 4-20% SDS-PAGE (link to IP-western blot protocol in Additional Info section below).

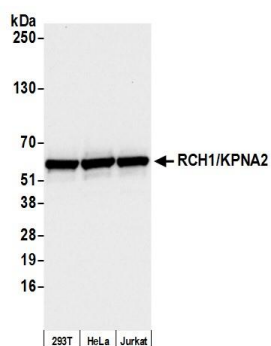
**IHC HUMAN CONTROLS** Western blot of lysates performed using standard western blot reagents and 4-20% SDS-PAGE. Bladder Cell Carcinoma, Breast Carcinoma, Colon Carcinoma, Laryngeal Squamous Cell Carcinoma, Small Cell Lung Cancer, Testicular Seminoma

**IHC MOUSE CONTROLS** Renal Cell Carcinoma, Squamous Cell Carcinoma, Teratoma

**ADDITIONAL INFO** <https://www.bethyl.com/product/A300-484A>

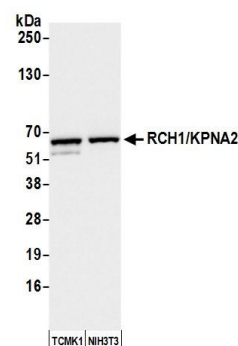
Use the link above to view SDS, a current list of citations, and other product specific information. IP-western blot protocol [https://www.bethyl.com/content/protocol\\_IP\\_WB](https://www.bethyl.com/content/protocol_IP_WB)

This document certifies that this product has met all of the quality control standards defined by Bethyl Laboratories, Inc.  
Eric McIntush, PhD | Chief Scientific Officer Date: October 1, 2019

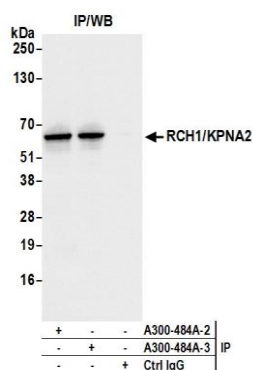
**Detection of human RCH1 /KPNA2 by western blot.**

*Samples:* Whole cell lysate (10 µg) from HEK293T, HeLa, and Jurkat cells prepared using NETN lysis buffer.

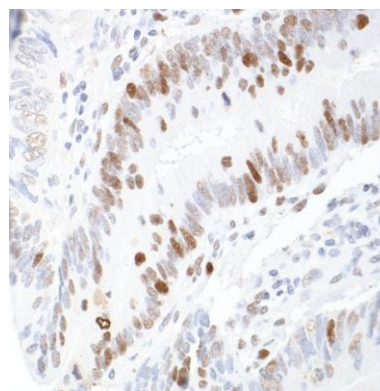
*Antibody:* Affinity purified rabbit anti-RCH1 /KPNA2 antibody A300-484A (lot A300-484A-3) used for WB at 0.04 µg/ml. *Detection:* Chemiluminescence with an exposure time of 3 seconds.

**Detection of mouse RCH1 /KPNA2 by western blot.**

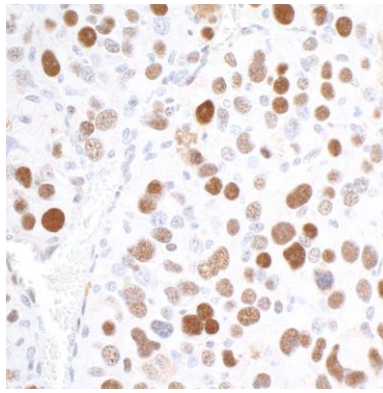
*Samples:* Whole cell lysate (10 µg) from TCMK-1 and NIH 3T3 cells prepared using NETN lysis buffer. *Antibody:* Affinity purified rabbit anti-RCH1 /KPNA2 antibody A300-484A (lot A300-484A-3) used for WB at 0.04 µg/ml. *Detection:* Chemiluminescence with an exposure time of 3 seconds.



**Detection of human RCH1 /KPNA2 by western blot of immunoprecipitates.** *Samples:* Whole cell lysate (1.0 mg per IP reaction; 20% of IP loaded) from HEK293T cells prepared using NETN lysis buffer. *Antibodies:* Affinity purified rabbit anti-RCH1 /KPNA2 antibody A300-484A (lot A300-484A-3) used for IP at 6 µg per reaction. RCH1 /KPNA2 was also immunoprecipitated by a previous lot of this antibody (lot A300-484A-2). For blotting immunoprecipitated RCH1 /KPNA2, A300-484A was used at 0.04 µg/ml. *Detection:* Chemiluminescence with an exposure time of 1 second.



**Detection of human RCH1 /KPNA2 by immunohistochemistry.** *Sample:* FFPE section of human colon carcinoma. *Antibody:* Affinity purified rabbit anti-RCH1 /KPNA2 (Cat. No. A300-484A lot 3) used at 1:5,000 (0.2µg/ml). *Detection:* DAB



**Detection of mouse RCH1 /KPNA2 by immunohistochemistry.** *Sample:* FFPE section of mouse renal cell carcinoma. *Antibody:* Affinity purified rabbit anti-RCH1 /KPNA2 (Cat. No. A300-484A lot 3) used at 1:5,000 (0.2 $\mu$ g/ml). *Detection:* DAB