



# SZABO SCANDIC

Part of Europa Biosite

## Produktinformation



Forschungsprodukte & Biochemikalien



Zellkultur & Verbrauchsmaterial



Diagnostik & molekulare Diagnostik



Laborgeräte & Service

Weitere Information auf den folgenden Seiten!  
See the following pages for more information!



### Lieferung & Zahlungsart

siehe unsere [Liefer- und Versandbedingungen](#)

### Zuschläge

- Mindermengenzuschlag
- Trockeneiszuschlag
- Gefahrgutzuschlag
- Expressversand

### SZABO-SCANDIC HandelsgmbH

Quellenstraße 110, A-1100 Wien

T. +43(0)1 489 3961-0

F. +43(0)1 489 3961-7

[mail@szabo-scandic.com](mailto:mail@szabo-scandic.com)

[www.szabo-scandic.com](http://www.szabo-scandic.com)

[linkedin.com/company/szaboscandic](https://www.linkedin.com/company/szaboscandic) 

# Lasu1 /Ureb1 Antibody

Rabbit Polyclonal

Antigen Affinity Purified	RefSeq ID	NP_113584.3
Catalog No. A300-486A-T	Uniprot ID	Q7Z6Z7
Lot No. A300-486A-T-10	GeneID	10075

---

<b>APPLICATIONS</b>	WB, IP, IHC
<b>SPECIES REACTIVITY</b>	Human
<b>AMOUNT</b>	10 µl
<b>CONCENTRATION</b>	1000 µg/ml
<b>STORAGE/SHELF LIFE</b>	2 – 8°C / 1 year from date of receipt
<b>PHYSICAL STATE</b>	Liquid
<b>BUFFER</b>	Tris-citrate/phosphate buffer, pH 7 to 8 containing 0.09% Sodium Azide
<b>ISOTYPE</b>	IgG
<b>ORIGIN</b>	USA
<b>PRODUCTION PROCEDURES</b>	Antibody was affinity purified using an epitope specific to Ureb1 /Lasu1 immobilized on solid support.

The epitope recognized by A300-486A-T maps to a region between residues 2250 and 2300 of human Upstream Regulatory Element Binding Protein 1 using the numbering given in entry NP\_113584.3 (GeneID 10075).

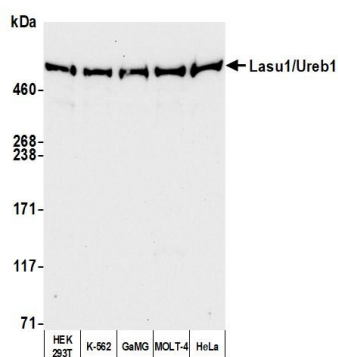
**APPLICATIONS** Centrifuge tube to remove product from lid. Optimal working dilutions should be determined experimentally by the investigator. Prepare working dilution immediately before use.

Western Blot	1:2,000 – 1:10,000
Immunoprecipitation	2 – 10 µg/mg lysate
Immunohistochemistry	1:100 to 1:500. Epitope retrieval with citrate buffer pH6.0 is recommended for FFPE tissue sections.

**IHC HUMAN CONTROLS** Breast Carcinoma, Colon Carcinoma, Ovarian Carcinoma, Testicular Seminoma

**ADDITIONAL INFO** <https://www.fortislife.com/p/A300-486A-T>  
Use the link above to view SDS, a current list of citations, and other product specific information.

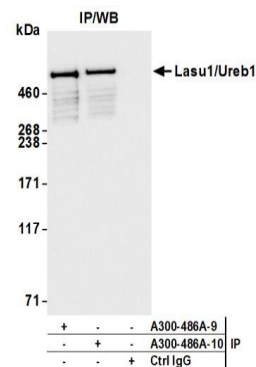
This document certifies that this product has met all of the quality control standards defined by Bethyl Laboratories, Inc.  
Michael Spencer, PhD Date: November 15, 2022



#### Detection of human Lasu1/Ureb1 by western blot.

**Samples:** Whole cell lysate (50 µg) from HEK293T, K-562, GaMG, MOLT-4, and HeLa cells prepared using NETN lysis buffer. **Antibody:** Affinity purified rabbit anti-Lasu1/Ureb1 antibody (A300-486A lot 10) used for WB at 0.1 µg/ml.

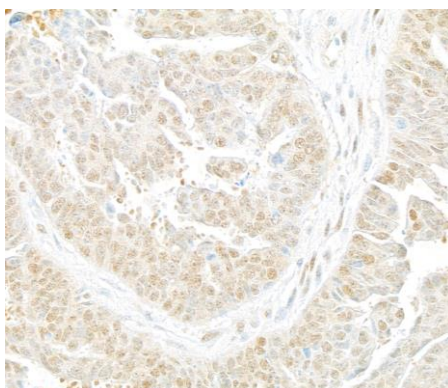
**Detection:** Chemiluminescence with an exposure time of 10 seconds.



#### Detection of human Lasu1/Ureb1 by western blot of immunoprecipitates.

**Samples:** Whole cell lysate (1.0 mg per IP reaction; 20% of IP loaded) from HeLa cells prepared using NETN lysis buffer. **Antibodies:** Affinity purified rabbit anti-Lasu1/Ureb1 antibody (A300-486A lot 10) used for IP at 6 µg per reaction. Lasu1/Ureb1 was also immunoprecipitated by a previous lot of this antibody (A300-486A lot 9). For blotting immunoprecipitated Lasu1/Ureb1, A300-486A was used at 0.1 µg/ml.

**Detection:** Chemiluminescence with an exposure time of 1 second.



#### Detection of human Lasu1/Ureb1 by immunohistochemistry.

**Sample:** FFPE section of human ovarian carcinoma. **Antibody:** Affinity purified rabbit anti-Lasu1/Ureb1 (A300-486A Lot 10) used at a dilution of 1:5,000 (0.2µg/ml). **Detection:** DAB.