



SZABO SCANDIC

Part of Europa Biosite

Produktinformation



Forschungsprodukte & Biochemikalien



Zellkultur & Verbrauchsmaterial



Diagnostik & molekulare Diagnostik



Laborgeräte & Service

Weitere Information auf den folgenden Seiten!
See the following pages for more information!



Lieferung & Zahlungsart

siehe unsere [Liefer- und Versandbedingungen](#)

Zuschläge

- Mindermengenzuschlag
- Trockeneiszuschlag
- Gefahrgutzuschlag
- Expressversand

SZABO-SCANDIC HandelsgmbH

Quellenstraße 110, A-1100 Wien

T. +43(0)1 489 3961-0

F. +43(0)1 489 3961-7

mail@szabo-scandic.com

www.szabo-scandic.com

[linkedin.com/company/szaboscandic](https://www.linkedin.com/company/szaboscandic) 

CRM1 Antibody

Rabbit Polyclonal

Antigen Affinity Purified

Protein ID NP_003391.1

Catalog No. A300-490A

GeneID 7514

Lot No. A300-490A-1



APPLICATIONS	IP
SPECIES REACTIVITY	Human
AMOUNT	100 µl
CONCENTRATION	1000 µg/ml
STORAGE/SHELF LIFE	2 - 8° C / 1 year from date of receipt
PHYSICAL STATE	Liquid
BUFFER	Tris-citrate/phosphate buffer, pH 7 to 8 containing 0.09% Sodium Azide
ISOTYPE	IgG
ORIGIN	USA
PRODUCTION PROCEDURES	Antibody was affinity purified using an epitope specific to CRM1 (Exportin 1) immobilized on solid support.

The epitope recognized by A300-490A maps to a region between residues 375 and 425 of human Chromosome Region Maintenance 1 (Exportin 1) using the numbering given in entry NP_003391.1 (GeneID 7514).

Immunoglobulin concentration was determined by extinction coefficient: absorbance at 280 nm of 1.4 equals 1.0 mg of IgG.

APPLICATIONS Centrifuge tube to remove product from lid. Optimal working dilutions should be determined experimentally by the investigator. Prepare working dilution immediately before use.

Western Blot Not recommended. Use rabbit anti-CRM1 antibody A300-469A.

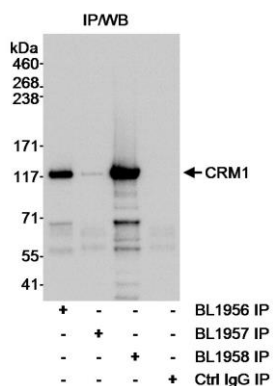
Immunoprecipitation 2 - 5 µg/mg lysate

APPLICATION NOTES Western blot of immunoprecipitates performed using Normal Pig Serum (Cat. No. S100-020), Goat anti-Rabbit Light Chain HRP Conjugate (Cat. No. A120-113P) and 4-8% SDS-PAGE (link to IP-western blot protocol in Additional Info section below).

ADDITIONAL INFO <https://www.bethyl.com/product/A300-490A>

Use the link above to view SDS, a current list of citations, and other product specific information. IP-western blot protocol: https://www.bethyl.com/content/protocol_IP_WB

This document certifies that this product has met all of the quality control standards defined by Bethyl Laboratories, Inc.
Eric McIntush, PhD | Chief Scientific Officer Date: June 21, 2019



Detection of CRM1 (Exportin 1) by immunoprecipitation.

Samples: Whole cell lysate (1 mg/IP; ¼ of reaction loaded/lane) from HeLa cells. *Antibodies:* Affinity purified rabbit anti-CRM1 antibody BL1956 (Cat. No. A300-490A) used at 3 µg/mg lysate for IP. CRM1 was also immunoprecipitated by rabbit anti-CRM1 antibodies BL1958 (Cat. No. A300-469A) and less efficiently by BL1957, which recognize downstream epitopes on CRM1. immunoprecipitated CRM1 was blotted using BL1958 at 0.1 µg/ml. *Detection:* Chemiluminescence with an exposure time of 3 seconds.