



# SZABO SCANDIC

Part of Europa Biosite

## Produktinformation



Forschungsprodukte & Biochemikalien



Zellkultur & Verbrauchsmaterial



Diagnostik & molekulare Diagnostik



Laborgeräte & Service

Weitere Information auf den folgenden Seiten!  
See the following pages for more information!



### Lieferung & Zahlungsart

siehe unsere [Liefer- und Versandbedingungen](#)

### Zuschläge

- Mindermengenzuschlag
- Trockeneiszuschlag
- Gefahrgutzuschlag
- Expressversand

### SZABO-SCANDIC HandelsgmbH

Quellenstraße 110, A-1100 Wien

T. +43(0)1 489 3961-0

F. +43(0)1 489 3961-7

[mail@szabo-scandic.com](mailto:mail@szabo-scandic.com)

[www.szabo-scandic.com](http://www.szabo-scandic.com)

[linkedin.com/company/szaboscandic](https://www.linkedin.com/company/szaboscandic) 

# Cytoskeletal Actin Antibody

Rabbit Polyclonal

Antigen Affinity Purified	Protein ID	P60709
Catalog No. A300-491A-T	GeneID	60
Lot No. A300-491A-T-18		



<b>APPLICATIONS</b>	WB, IHC
<b>SPECIES REACTIVITY</b>	Human, Mouse
<b>PRESUMED REACTIVITY</b>	Based on 100% sequence identity, this antibody is predicted to react with Rat, X. tropicalis, Chicken, Sheep, Bovine, Dog, Horse, Rabbit, Guinea pig_10141, Pig, Golden hamster, Orangutan and Chimpanzee
<b>AMOUNT</b>	20 µl (2 blots)
<b>CONCENTRATION</b>	100 µg/ml
<b>STORAGE/SHELF LIFE</b>	2 - 8° C / 1 year from date of receipt
<b>PHYSICAL STATE</b>	Liquid
<b>BUFFER</b>	Tris-buffered Saline containing 0.1% BSA and 0.09% Sodium Azide
<b>ISOTYPE</b>	IgG
<b>ORIGIN</b>	USA
<b>PRODUCTION PROCEDURES</b>	Antibody was affinity purified using an epitope specific to Cytoskeletal Actin immobilized on solid support.

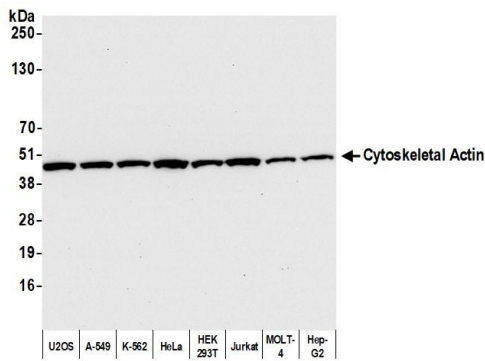
The epitope recognized by A300-491A-T maps to the N-terminus of human Beta-actin using the numbering given in Swiss-Prot entry P60709 (GeneID 60). The N-terminus of Beta-Actin is highly conserved with Gamma-Actin and preliminary indications are that A300-491A-T also recognizes Gamma-Actin (GeneID 71).

**APPLICATIONS** Centrifuge tube to remove product from lid. Optimal working dilutions should be determined experimentally by the investigator. Prepare working dilution immediately before use.

Western Blot	1:1000
Immunoprecipitation	Not recommended
Immunohistochemistry	1:40 to 1:200. Epitope retrieval with citrate buffer pH6.0 is recommended for FFPE tissue sections.

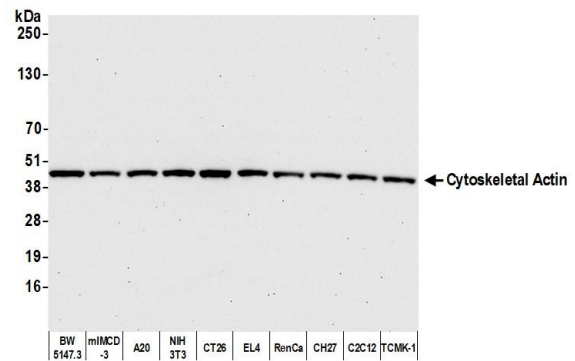
**ADDITIONAL INFO** <https://www.bethyl.com/product/A300-491A-T>  
Use the link above to view SDS, a current list of citations, and other product specific information.

This document certifies that this product has met all of the quality control standards defined by Bethyl Laboratories, Inc.  
Eric McIntush, PhD | Chief Scientific Officer Date: July 17, 2020



**Detection of human Cytoskeletal Actin by western blot.**

*Samples:* Whole cell lysate (10 µg) from U2OS, A-549, K-562, HeLa, HEK293T, Jurkat, MOLT-4, and Hep-G2 cells prepared using NETN lysis buffer. *Antibody:* Affinity purified rabbit anti-Cytoskeletal Actin antibody A300-491A-T Lot 18 used for WB at 1:1,000. *Detection:* Chemiluminescence with an exposure time of 10 seconds.



**Detection of mouse Cytoskeletal Actin by western blot.**

*Samples:* Whole cell lysate (10 µg) from BW5147.3, mIMCD-3, A20, NIH 3T3, CT26, EL4, RenCa, CH27, C2C12, and TCMK-1 cells prepared using NETN lysis buffer. *Antibody:* Affinity purified rabbit anti-Cytoskeletal Actin antibody A300-491A-T Lot 18 used for WB at 1:1,000. *Detection:* Chemiluminescence with an exposure time of 30 seconds.