



SZABO SCANDIC

Part of Europa Biosite

Produktinformation



Forschungsprodukte & Biochemikalien



Zellkultur & Verbrauchsmaterial



Diagnostik & molekulare Diagnostik



Laborgeräte & Service

Weitere Information auf den folgenden Seiten!
See the following pages for more information!



Lieferung & Zahlungsart

siehe unsere [Liefer- und Versandbedingungen](#)

Zuschläge

- Mindermengenzuschlag
- Trockeneiszuschlag
- Gefahrgutzuschlag
- Expressversand

SZABO-SCANDIC HandelsgmbH

Quellenstraße 110, A-1100 Wien

T. +43(0)1 489 3961-0

F. +43(0)1 489 3961-7

mail@szabo-scandic.com

www.szabo-scandic.com

[linkedin.com/company/szaboscandic](https://www.linkedin.com/company/szaboscandic) 

Cytoskeletal Actin Antibody

Rabbit Polyclonal

Antigen Affinity Purified	Protein ID	P60709
Catalog No. A300-491A	GeneID	60
Lot No. A300-491A-18		



APPLICATIONS WB, IHC

SPECIES REACTIVITY Human, Mouse

PRESUMED REACTIVITY Based on 100% sequence identity, this antibody is predicted to react with Rat, X. tropicalis, Chicken, Sheep, Bovine, Dog, Horse, Rabbit, Guinea pig_10141, Pig, Golden hamster, Orangutan and Chimpanzee

AMOUNT 100 µl

CONCENTRATION 1000 µg/ml

STORAGE/SHELF LIFE 2 - 8° C / 1 year from date of receipt

PHYSICAL STATE Liquid

BUFFER Tris-citrate/phosphate buffer, pH 7 to 8 containing 0.09% Sodium Azide

ISOTYPE IgG

ORIGIN USA

PRODUCTION PROCEDURES Antibody was affinity purified using an epitope specific to Cytoskeletal Actin immobilized on solid support.

The epitope recognized by A300-491A maps to the N-terminus of human Beta-actin using the numbering given in Swiss-Prot entry P60709 (GeneID 60). The N-terminus of Beta-Actin is highly conserved with Gamma-Actin and preliminary indications are that A300-491A also recognizes Gamma-Actin (GeneID 71).

Immunoglobulin concentration was determined by extinction coefficient: absorbance at 280 nm of 1.4 equals 1.0 mg of IgG.

APPLICATIONS Centrifuge tube to remove product from lid. Optimal working dilutions should be determined experimentally by the investigator. Prepare working dilution immediately before use.

Western Blot 1:10,000 - 1:25,000

Immunoprecipitation Not recommended

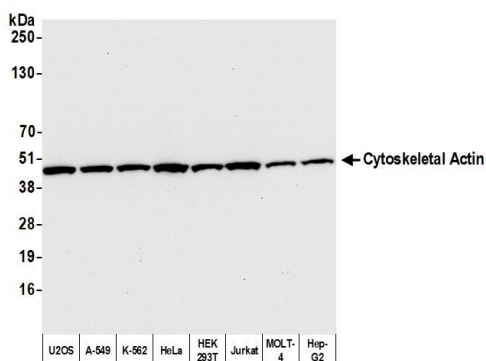
Immunohistochemistry 1:1,000 to 1:5,000. Epitope retrieval with citrate buffer pH6.0 is recommended for FFPE tissue sections.

IHC HUMAN CONTROLS Breast Carcinoma, Colon Carcinoma, Ovarian Carcinoma, Prostate Carcinoma

ADDITIONAL INFO <https://www.bethyl.com/product/A300-491A>

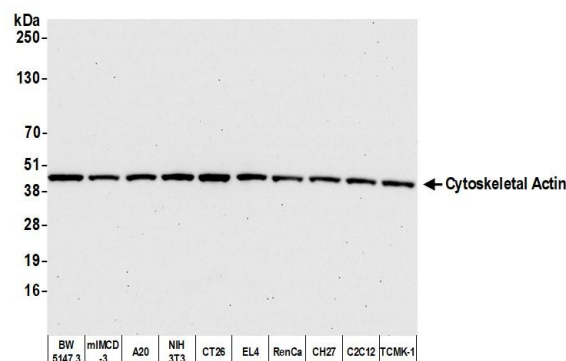
Use the link above to view SDS, a current list of citations, and other product specific information.

This document certifies that this product has met all of the quality control standards defined by Bethyl Laboratories, Inc.
Eric McIntush, PhD | Chief Scientific Officer Date: July 17, 2020



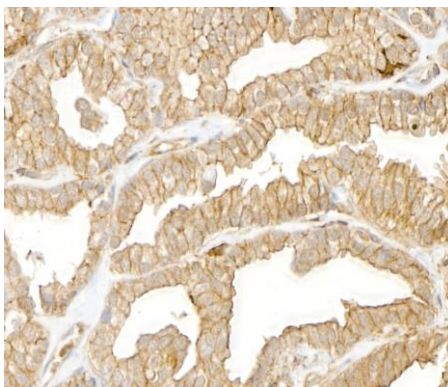
Detection of human Cytoskeletal Actin by western blot.

Samples: Whole cell lysate (10 µg) from U2OS, A-549, K-562, HeLa, HEK293T, Jurkat, MOLT-4, and Hep-G2 cells prepared using NETN lysis buffer. *Antibody:* Affinity purified rabbit anti-Cytoskeletal Actin antibody A300-491A Lot 18 used for WB at 0.04 µg/ml. *Detection:* Chemiluminescence with an exposure time of 10 seconds.



Detection of mouse Cytoskeletal Actin by western blot.

Samples: Whole cell lysate (10 µg) from BW5147.3, mIMCD-3, A20, NIH 3T3, CT26, EL4, RenCa, CH27, C2C12, and TCMK-1 cells prepared using NETN lysis buffer. *Antibody:* Affinity purified rabbit anti-Cytoskeletal Actin antibody A300-491A Lot 18 used for WB at 0.04 µg/ml. *Detection:* Chemiluminescence with an exposure time of 30 seconds.



Detection of human Cytoskeletal Actin by immunohistochemistry. *Sample:* FFPE section of human prostate cancer. *Antibody:* Affinity purified rabbit anti-Cytoskeletal Actin (A300-491A Lot 18) used at 1:1,000 (1 µg/ml). *Detection:* DAB