



# SZABO SCANDIC

Part of Europa Biosite

## Produktinformation



Forschungsprodukte & Biochemikalien



Zellkultur & Verbrauchsmaterial



Diagnostik & molekulare Diagnostik



Laborgeräte & Service

Weitere Information auf den folgenden Seiten!  
See the following pages for more information!



### Lieferung & Zahlungsart

siehe unsere [Liefer- und Versandbedingungen](#)

### Zuschläge

- Mindermengenzuschlag
- Trockeneiszuschlag
- Gefahrgutzuschlag
- Expressversand

### SZABO-SCANDIC HandelsgmbH

Quellenstraße 110, A-1100 Wien

T. +43(0)1 489 3961-0

F. +43(0)1 489 3961-7

[mail@szabo-scandic.com](mailto:mail@szabo-scandic.com)

[www.szabo-scandic.com](http://www.szabo-scandic.com)

[linkedin.com/company/szaboscandic](https://www.linkedin.com/company/szaboscandic) 

# CamK4 Antibody

Rabbit Polyclonal

Antigen Affinity Purified

Protein ID Q16566

Catalog No. A300-494A

GeneID 814

Lot No. A300-494A-1



<b>APPLICATIONS</b>	WB, IP, IHC
<b>SPECIES REACTIVITY</b>	Human
<b>AMOUNT</b>	100 µl
<b>CONCENTRATION</b>	200 µg/ml
<b>STORAGE/SHELF LIFE</b>	2 - 8° C / 1 year from date of receipt
<b>PHYSICAL STATE</b>	Liquid
<b>BUFFER</b>	Tris-buffered Saline containing 0.1% BSA and 0.09% Sodium Azide
<b>ISOTYPE</b>	IgG
<b>ORIGIN</b>	USA

**PRODUCTION PROCEDURES** Antibody was affinity purified using an epitope specific to CamK4 immobilized on solid support.

The epitope recognized by A300-494A maps to a region between residue 425 and the C-terminus (residue 473) of human Calcium/Calmodulin-dependent Protein Kinase IV using the numbering given in Swiss-Prot entry Q16566 (GeneID 814).

Immunoglobulin concentration was determined by extinction coefficient: absorbance at 280 nm of 1.4 equals 1.0 mg of IgG.

**APPLICATIONS** Centrifuge tube to remove product from lid. Optimal working dilutions should be determined experimentally by the investigator. Prepare working dilution immediately before use.

Western Blot 1:5,000 - 1:15,000

Immunoprecipitation 3 - 5 µg/mg lysate

Immunohistochemistry 1:200 - 1:1,000

**APPLICATION NOTES** Western blot of immunoprecipitates performed using Normal Pig Serum (Cat. No. S100-020), Goat anti-Rabbit Light Chain HRP Conjugate (Cat. No. A120-113P) and 4-20% SDS-PAGE (link to IP-western blot protocol in Additional Info section below).

Western blot of lysates performed using standard western blot reagents and 4-20% SDS-PAGE.

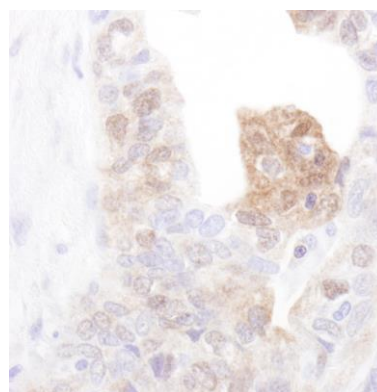
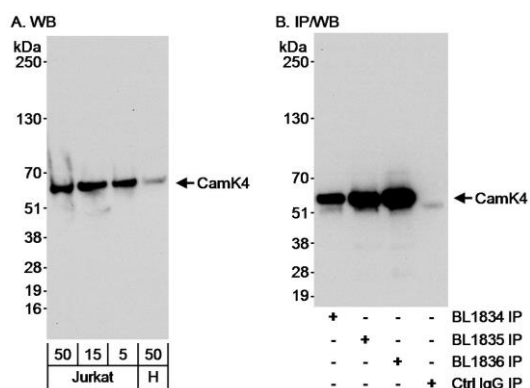
**IHC HUMAN CONTROLS** Ovarian Carcinoma

**ADDITIONAL INFO** <https://www.bethyl.com/product/A300-494A>

Use the link above to view SDS, a current list of citations, and other product specific information.

IP-western blot protocol: [https://www.bethyl.com/content/protocol\\_IP\\_WB](https://www.bethyl.com/content/protocol_IP_WB)

This document certifies that this product has met all of the quality control standards defined by Bethyl Laboratories, Inc.  
Eric McIntush, PhD | Chief Scientific Officer Date: June 21, 2019



**Detection of human CamK4 by western blot and immunoprecipitation.** *Samples:* A) Whole cell lysate from Jurkat (5, 15 and 50 µg) and HeLa (50 µg) cells. B) Whole cell lysate (1 mg/IP; 1/4 of IP loaded/lane) from Jurkat cells. *Antibodies:* Affinity purified rabbit anti-CamK4 antibody BL1836 (Cat. No. A300-494A) used at 0.04 µg/ml for WB (A and B) and at 3 µg/mg lysate for IP (B). CamK4 was also immunoprecipitated using CamK4 antibodies BL1834 (Cat. No. A300-492A) and BL1835 (Cat. No. A300-493A) used at 3 µg/mg lysate for IP. *Detection:* Chemiluminescence with an exposure time of 30 seconds.

**Detection of human CamK4 by immunohistochemistry.** *Sample:* FFPE section of human ovarian carcinoma. *Antibody:* Affinity purified rabbit anti-CamK4 (Cat. No. A300-494A) used at a dilution of 1:1,000 (0.2 µg/ml). *Detection:* DAB