



SZABO SCANDIC

Part of Europa Biosite

Produktinformation



Forschungsprodukte & Biochemikalien



Zellkultur & Verbrauchsmaterial



Diagnostik & molekulare Diagnostik



Laborgeräte & Service

Weitere Information auf den folgenden Seiten!
See the following pages for more information!



Lieferung & Zahlungsart

siehe unsere [Liefer- und Versandbedingungen](#)

Zuschläge

- Mindermengenzuschlag
- Trockeneiszuschlag
- Gefahrgutzuschlag
- Expressversand

SZABO-SCANDIC HandelsgmbH

Quellenstraße 110, A-1100 Wien

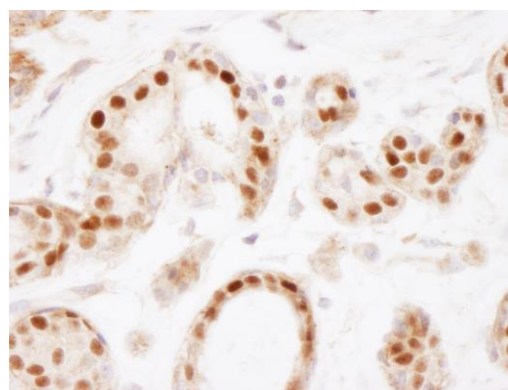
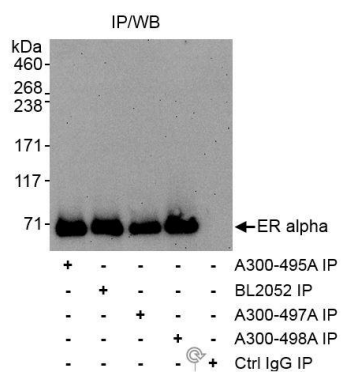
T. +43(0)1 489 3961-0

F. +43(0)1 489 3961-7

mail@szabo-scandic.com

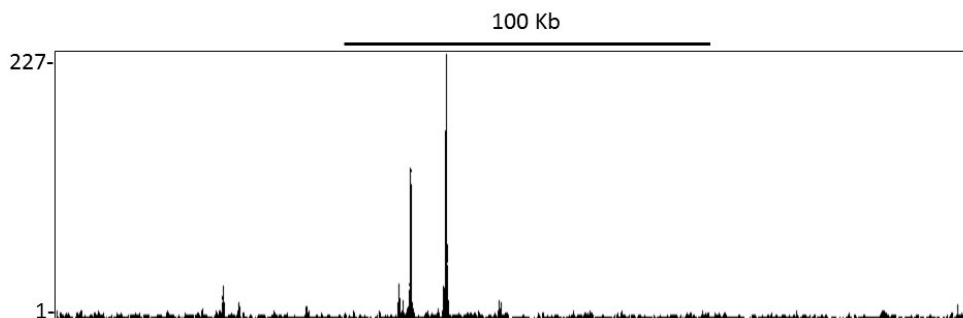
www.szabo-scandic.com

[linkedin.com/company/szaboscandic](https://www.linkedin.com/company/szaboscandic) 



Detection of human Estrogen Receptor Alpha by immunoprecipitation. *Samples:* Whole cell lysate (1 mg for IP, 1/4 of IP loaded) from MCF-7 cells. *Antibodies:* Affinity purified rabbit anti-ER alpha antibodies A300-495A-T (lot A300-495A-T-1), BL2052, A300-497A, and A300-498A each used at 3 µg/mg lysate for IP. Estrogen receptor alpha was blotted using A300-498A at 0.1 µg/ml. *Detection:* Chemiluminescence with an exposure time of 3 minutes.

Detection of human Estrogen Receptor Alpha by immunohistochemistry. *Samples:* FFPE section of human breast. *Antibody:* Affinity purified rabbit anti-Estrogen Receptor Alpha (Cat. No. A300-495A-T) used at a dilution of 1:2,500 (0.4 µg/ml). *Detection:* DAB.



Localization of Estrogen Receptor Alpha Binding Sites by ChIP-seq. Chromatin from treated MCF-7 cells was immunoprecipitated with anti-Estrogen Receptor Alpha antibody A300-495A and analyzed by DNA sequencing. The figure illustrates the peak distribution of Estrogen Receptor Alpha binding within a 250 Kb region of chromosome 21 as detected using anti-Estrogen Receptor Alpha antibody A300-495A. ChIP-seq validation performed by Active Motif, Carlsbad, CA.