



SZABO SCANDIC

Part of Europa Biosite

Produktinformation



Forschungsprodukte & Biochemikalien



Zellkultur & Verbrauchsmaterial



Diagnostik & molekulare Diagnostik



Laborgeräte & Service

Weitere Information auf den folgenden Seiten!
See the following pages for more information!



Lieferung & Zahlungsart

siehe unsere [Liefer- und Versandbedingungen](#)

Zuschläge

- Mindermengenzuschlag
- Trockeneiszuschlag
- Gefahrgutzuschlag
- Expressversand

SZABO-SCANDIC HandelsgmbH

Quellenstraße 110, A-1100 Wien

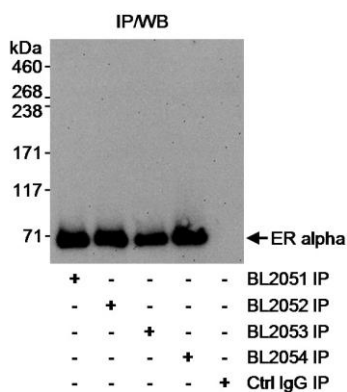
T. +43(0)1 489 3961-0

F. +43(0)1 489 3961-7

mail@szabo-scandic.com

www.szabo-scandic.com

[linkedin.com/company/szaboscandic](https://www.linkedin.com/company/szaboscandic) 



Detection of human Estrogen Receptor Alpha by immunoprecipitation. *Samples:* Whole cell lysate (1 mg for IP, 1/4 of IP loaded) from MCF-7 cells. *Antibody:* Affinity purified rabbit anti-ER alpha antibodies BL2051 (Cat. No. A300-495A), BL2052 (Cat. No. A300-496A), BL2053 (Cat. No. A300-497A-T) and BL2054 (Cat. No. A300-498A) each used at 3 µg/mg lysate for IP. Estrogen receptor alpha was blotted using BL2054 at 0.1 µg/ml. *Detection:* Chemiluminescence with an exposure time of 3 minutes.