



SZABO SCANDIC

Part of Europa Biosite

Produktinformation



Forschungsprodukte & Biochemikalien



Zellkultur & Verbrauchsmaterial



Diagnostik & molekulare Diagnostik



Laborgeräte & Service

Weitere Information auf den folgenden Seiten!
See the following pages for more information!



Lieferung & Zahlungsart

siehe unsere [Liefer- und Versandbedingungen](#)

Zuschläge

- Mindermengenzuschlag
- Trockeneiszuschlag
- Gefahrgutzuschlag
- Expressversand

SZABO-SCANDIC HandelsgmbH

Quellenstraße 110, A-1100 Wien

T. +43(0)1 489 3961-0

F. +43(0)1 489 3961-7

mail@szabo-scandic.com

www.szabo-scandic.com

[linkedin.com/company/szaboscandic](https://www.linkedin.com/company/szaboscandic) 

Estrogen Receptor Alpha Antibody

Rabbit Polyclonal

Antigen Affinity Purified Protein ID P03372

Catalog No. A300-497A GeneID 2099

Lot No. A300-497A-1



APPLICATIONS IP

SPECIES REACTIVITY Human

AMOUNT 100 µl

CONCENTRATION 1000 µg/ml

STORAGE/SHELF LIFE 2 - 8° C / 1 year from date of receipt

PHYSICAL STATE Liquid

BUFFER Tris-citrate/phosphate buffer, pH 7 to 8 containing 0.09% Sodium Azide

ISOTYPE IgG

ORIGIN USA

PRODUCTION PROCEDURES Antibody was affinity purified using an epitope specific to Estrogen Receptor Alpha immobilized on solid support.

The epitope recognized by A300-497A maps to a region between residues 525 and 575 of human Estrogen Receptor Alpha using the numbering given in SwissProt entry P03372 (GeneID 2099).

Immunoglobulin concentration was determined by extinction coefficient: absorbance at 280 nm of 1.4 equals 1.0 mg of IgG.

APPLICATIONS Centrifuge tube to remove product from lid. Optimal working dilutions should be determined experimentally by the investigator. Prepare working dilution immediately before use.

Western Blot Not recommended. Use rabbit anti-Estrogen Receptor Alpha antibody A300-498A.

Immunoprecipitation 3 - 5 µg/mg lysate

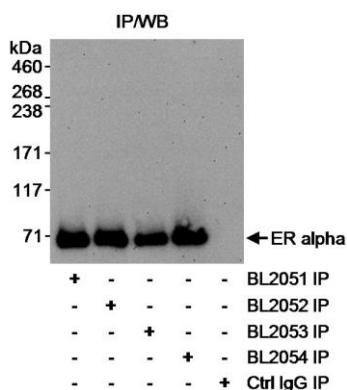
APPLICATION NOTES Western blot of immunoprecipitates performed using Normal Pig Serum (Cat. No. S100-020), Goat anti-Rabbit Light Chain HRP Conjugate (Cat. No. A120-113P) and 4-8% SDS-PAGE (link to IP-western blot protocol in Additional Info section below).

ADDITIONAL INFO <https://www.bethyl.com/product/A300-497A>

Use the link above to view SDS, a current list of citations, and other product specific information.

IP-western blot protocol: https://www.bethyl.com/content/protocol_IP_WB

This document certifies that this product has met all of the quality control standards defined by Bethyl Laboratories, Inc.
Eric McIntush, PhD | Chief Scientific Officer Date: June 21, 2019



Detection of human Estrogen Receptor Alpha by immunoprecipitation. *Samples:* Whole cell lysate (1 mg for IP, 1/4 of IP loaded) from MCF-7 cells. *Antibodies:* Affinity purified rabbit anti-ER alpha antibodies BL2051 (Cat. No. A300-495A), BL2052 (Cat. No. A300-496A), BL2053 (Cat. No. A300-497A) and BL2054 (Cat. No. A300-498A) each used at 3 µg/mg lysate for IP. Estrogen receptor alpha was blotted using BL2054 at 0.1 µg/ml. *Detection:* Chemiluminescence with an exposure time of 3 minutes.