



SZABO SCANDIC

Part of Europa Biosite

Produktinformation



Forschungsprodukte & Biochemikalien



Zellkultur & Verbrauchsmaterial



Diagnostik & molekulare Diagnostik



Laborgeräte & Service

Weitere Information auf den folgenden Seiten!
See the following pages for more information!



Lieferung & Zahlungsart

siehe unsere [Liefer- und Versandbedingungen](#)

Zuschläge

- Mindermengenzuschlag
- Trockeneiszuschlag
- Gefahrgutzuschlag
- Expressversand

SZABO-SCANDIC HandelsgmbH

Quellenstraße 110, A-1100 Wien

T. +43(0)1 489 3961-0

F. +43(0)1 489 3961-7

mail@szabo-scandic.com

www.szabo-scandic.com

[linkedin.com/company/szaboscandic](https://www.linkedin.com/company/szaboscandic) 

SLK Antibody

Rabbit Polyclonal

Antigen Affinity Purified	RefSeq ID	NP_055535.2
Catalog No. A300-499A-T	Uniprot ID	Q9H2G2
Lot No. 1	GeneID	9748

APPLICATIONS	WB, IP
SPECIES REACTIVITY	Human
PRESUMED REACTIVITY	Based on 100% sequence identity, this antibody is predicted to react with Mouse and Rat
AMOUNT	10 µl
CONCENTRATION	1000 µg/ml
STORAGE/SHELF LIFE	2 – 8°C / 1 year from date of receipt
PHYSICAL STATE	Liquid
BUFFER	Tris-citrate/phosphate buffer, pH 7 to 8 containing 0.09% Sodium Azide
ISOTYPE	IgG
ORIGIN	USA
PRODUCTION PROCEDURES	Antibody was affinity purified using an epitope specific to SLK immobilized on solid support.

The epitope recognized by A300-499A maps to a region between residues 1 and 50 of human Ste20-like Kinase using the numbering given in entry NP_055535.2 (GeneID 9748).

Immunoglobulin concentration was determined using Beer's Law where 1 mg/mL IgG has an A280 of 1.4.

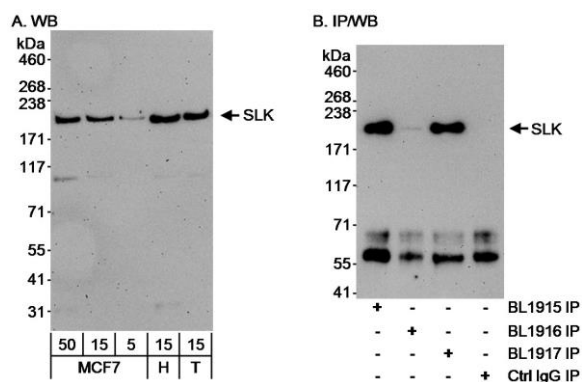
APPLICATIONS Centrifuge tube to remove product from lid. Optimal working dilutions should be determined experimentally by the investigator. Prepare working dilution immediately before use.

Western Blot	1:500 – 1:5000
Immunoprecipitation	6 µg/mg lysate

ADDITIONAL INFO <https://www.fortislife.com/p/A300-499A-T>

Use the link above to view SDS, a current list of citations, and other product specific information.

This document certifies that this product has met all of the quality control standards defined by Bethyl Laboratories, Inc.
Michael Spencer, PhD Date: January 31, 2024



Detection of human SLK by western blot and immunoprecipitation. *Samples:* A) Whole cell lysate from MCF-7 (5, 15 and 50 μ g), HeLa (H; 15 μ g) and HEK293T (T; 15 μ g). B) Whole cell lysate (1 mg/IP; 1/4 of IP loaded) from MCF7 cells. *Antibodies:* Affinity purified rabbit anti-SLK antibody BL1915 (Cat. No. A300-499A) used at 1 μ g/ml for WB (A and B) and at 3 μ g/mg lysate for IP (B). SLK was also efficiently immunoprecipitated by BL1917 (Cat. No. A300-500A) but not by BL1916. *Detection:* Chemiluminescence with an exposure time of 3 minutes (A and B).