



SZABO SCANDIC

Part of Europa Biosite

Produktinformation



Forschungsprodukte & Biochemikalien



Zellkultur & Verbrauchsmaterial



Diagnostik & molekulare Diagnostik



Laborgeräte & Service

Weitere Information auf den folgenden Seiten!
See the following pages for more information!



Lieferung & Zahlungsart

siehe unsere [Liefer- und Versandbedingungen](#)

Zuschläge

- Mindermengenzuschlag
- Trockeneiszuschlag
- Gefahrgutzuschlag
- Expressversand

SZABO-SCANDIC HandelsgmbH

Quellenstraße 110, A-1100 Wien

T. +43(0)1 489 3961-0

F. +43(0)1 489 3961-7

mail@szabo-scandic.com

www.szabo-scandic.com

[linkedin.com/company/szaboscandic](https://www.linkedin.com/company/szaboscandic) 

AMPK alpha 1 Antibody

Rabbit Polyclonal

Antigen Affinity Purified RefSeq ID BAA36547.1

Catalog No. A300-507A-T Uniprot ID Q13131

Lot No. A300-507A-T-4 GeneID 5562

APPLICATIONS	WB, IP, IHC
SPECIES REACTIVITY	Human, Mouse
PRESUMED REACTIVITY	Based on 100% sequence identity, this antibody is predicted to react with Rat and Orangutan
AMOUNT	10 µl
CONCENTRATION	1000 µg/ml
STORAGE/SHELF LIFE	2 – 8°C / 1 year from date of receipt
PHYSICAL STATE	Liquid
BUFFER	Tris-citrate/phosphate buffer, pH 7 to 8 containing 0.09% Sodium Azide
ISOTYPE	IgG
ORIGIN	USA
PRODUCTION PROCEDURES	Antibody was affinity purified using an epitope specific to AMPK alpha 1 immobilized on solid support.

The epitope recognized by A300-507A-T maps to a region between residues 350 and 400 of human 5'-AMP-activated Protein Kinase, catalytic Alpha-1 chain using the numbering given in entry BAA36547.1 (GeneID 5562).

Immunoglobulin concentration was determined by extinction coefficient: absorbance at 280 nm of 1.4 equals 1.0 mg of IgG.

APPLICATIONS Centrifuge tube to remove product from lid. Optimal working dilutions should be determined experimentally by the investigator. Prepare working dilution immediately before use.

Western Blot 1:10,000 – 1:25,000

Immunoprecipitation 2 – 10 µg/mg lysate

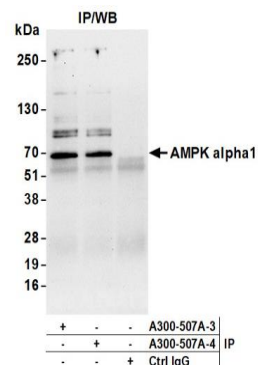
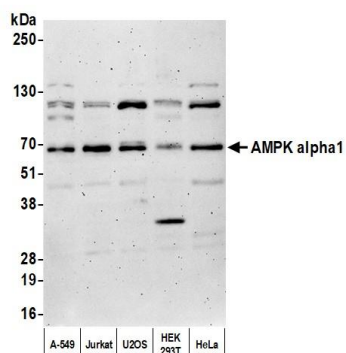
Immunohistochemistry 1:1,000 to 1:5,000. Epitope retrieval with citrate buffer pH6.0 is recommended for FFPE tissue sections.

IHC HUMAN CONTROLS Skeletal Muscle

ADDITIONAL INFO <https://www.fortislife.com/p/A300-507A-T>

Use the link above to view SDS, a current list of citations, and other product specific information.

This document certifies that this product has met all of the quality control standards defined by Bethyl Laboratories, Inc.
Michael Spencer, PhD Date: November 15, 2022

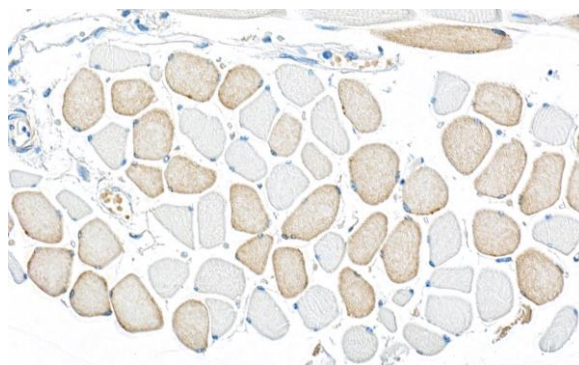


Detection of human AMPK alpha 1 by western blot.

Samples: Whole cell lysate (10 µg) from A-549, Jurkat, U2OS, HEK293T, and HeLa cells prepared using NETN lysis buffer. *Antibody:* Affinity purified rabbit anti-AMPK alpha 1 antibody (A300-507A lot 4) used for WB at 0.04 µg/ml. *Detection:* Chemiluminescence with an exposure time of 3 minutes.

Detection of human AMPK alpha 1 by western blot of immunoprecipitates.

Samples: Whole cell lysate (1.0 mg per IP reaction; 20% of IP loaded) from HEK293T cells prepared using NETN lysis buffer. *Antibodies:* Affinity purified rabbit anti-AMPK alpha 1 antibody (A300-507A lot 4) used for IP at 6 µg per reaction. AMPK alpha 1 was also immunoprecipitated by a previous lot of this antibody (A300-507A lot 3). For blotting immunoprecipitated AMPK alpha 1, A300-507A was used at 0.1 µg/ml. *Detection:* Chemiluminescence with an exposure time of 10 seconds.



Detection of human AMPK alpha 1 by immunohistochemistry. *Sample:* FFPE section of human skeletal muscle. *Antibody:* Affinity purified rabbit anti-AMPK alpha 1 (A300-507A Lot 4) used at a dilution of 1:1,000 (1µg/ml). *Detection:* DAB