



SZABO SCANDIC

Part of Europa Biosite

Produktinformation



Forschungsprodukte & Biochemikalien



Zellkultur & Verbrauchsmaterial



Diagnostik & molekulare Diagnostik



Laborgeräte & Service

Weitere Information auf den folgenden Seiten!
See the following pages for more information!



Lieferung & Zahlungsart

siehe unsere [Liefer- und Versandbedingungen](#)

Zuschläge

- Mindermengenzuschlag
- Trockeneiszuschlag
- Gefahrgutzuschlag
- Expressversand

SZABO-SCANDIC HandelsgmbH

Quellenstraße 110, A-1100 Wien

T. +43(0)1 489 3961-0

F. +43(0)1 489 3961-7

mail@szabo-scandic.com

www.szabo-scandic.com

[linkedin.com/company/szaboscandic](https://www.linkedin.com/company/szaboscandic) 

RanBP1 Antibody

Rabbit Polyclonal

Antigen Affinity Purified

Protein ID NP_002873.1

Catalog No. A300-513A-T

GeneID 5902

Lot No. A300-513A-T-3



APPLICATIONS WB, IP, IHC

SPECIES REACTIVITY Human

AMOUNT 20 µl (2 blots)

CONCENTRATION 400 µg/ml

STORAGE/SHELF LIFE 2 - 8° C / 1 year from date of receipt

PHYSICAL STATE Liquid

BUFFER Tris-buffered Saline containing 0.1% BSA and 0.09% Sodium Azide

ISOTYPE IgG

ORIGIN USA

PRODUCTION PROCEDURES Antibody was affinity purified using an epitope specific to RanBP1 immobilized on solid support.

The epitope recognized by A300-513A-T maps to a region between residue 1 and 50 of human RAN Binding Protein 1 using the numbering given in entry NP_002873.1 (GeneID 5902).

APPLICATIONS Centrifuge tube to remove product from lid. Optimal working dilutions should be determined experimentally by the investigator. Prepare working dilution immediately before use.

Western Blot 1:1000

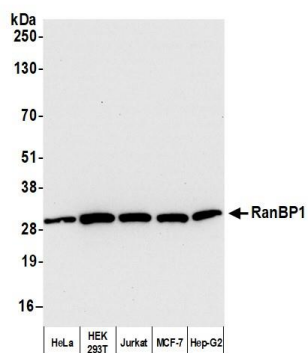
Immunoprecipitation The antibody contained within A300-513A-T has been qualified for use in immunoprecipitation; however, we recommend using the alternative formulation of this antibody found as product A300-513A.

Immunohistochemistry 1:800 - 1:4,000. Epitope retrieval with citrate buffer pH 6.0 is recommended for FFPE tissue sections.

ADDITIONAL INFO <https://www.bethyl.com/product/A300-513A-T>

Use the link above to view SDS, a current list of citations, and other product specific information.
IP-western blot protocol: https://www.bethyl.com/content/protocol_IP_WB

This document certifies that this product has met all of the quality control standards defined by Bethyl Laboratories, Inc.
Eric McIntush, PhD | Chief Scientific Officer Date: July 16, 2020



Detection of human RanBP1 by western blot. *Samples:* Whole cell lysate (5 μ g) from HeLa, HEK293T, Jurkat, MCF-7, and Hep-G2 cells prepared using NETN lysis buffer. ***Antibody:*** Affinity purified rabbit anti-RanBP1 antibody A300-513A-T Lot 3 used for WB at 1:1,000. ***Detection:*** Chemiluminescence with an exposure time of 10 seconds.