



SZABO SCANDIC

Part of Europa Biosite

Produktinformation



Forschungsprodukte & Biochemikalien



Zellkultur & Verbrauchsmaterial



Diagnostik & molekulare Diagnostik



Laborgeräte & Service

Weitere Information auf den folgenden Seiten!
See the following pages for more information!



Lieferung & Zahlungsart

siehe unsere [Liefer- und Versandbedingungen](#)

Zuschläge

- Mindermengenzuschlag
- Trockeneiszuschlag
- Gefahrgutzuschlag
- Expressversand

SZABO-SCANDIC HandelsgmbH

Quellenstraße 110, A-1100 Wien

T. +43(0)1 489 3961-0

F. +43(0)1 489 3961-7

mail@szabo-scandic.com

www.szabo-scandic.com

[linkedin.com/company/szaboscandic](https://www.linkedin.com/company/szaboscandic) 

RanBP1 Antibody

Rabbit Polyclonal

Antigen Affinity Purified

Protein ID NP_002873.1

Catalog No. A300-513A

GeneID 5902

Lot No. A300-513A-3



APPLICATIONS	WB, IP, IHC
SPECIES REACTIVITY	Human
AMOUNT	100 µl
CONCENTRATION	1000 µg/ml
STORAGE/SHELF LIFE	2 – 8° C / 1 year from date of receipt
PHYSICAL STATE	Liquid
BUFFER	Tris-citrate/phosphate buffer, pH 7 to 8 containing 0.09% Sodium Azide
ISOTYPE	IgG
ORIGIN	USA
PRODUCTION PROCEDURES	Antibody was affinity purified using an epitope specific to RanBP1 immobilized on solid support.

The epitope recognized by A300-513A maps to a region between residue 1 and 50 of human RAN Binding Protein 1 using the numbering given in entry NP_002873.1 (GeneID 5902).

Immunoglobulin concentration was determined by extinction coefficient: absorbance at 280 nm of 1.4 equals 1.0 mg of IgG.

APPLICATIONS Centrifuge tube to remove product from lid. Optimal working dilutions should be determined experimentally by the investigator. Prepare working dilution immediately before use.

Western Blot 1:10,000 – 1:25,000

Immunoprecipitation 2 – 10 µg/mg lysate

Immunohistochemistry 1:2,000 to 1:10,000. Epitope retrieval with Tris-EDTA pH9.0 is recommended for FFPE tissue sections.

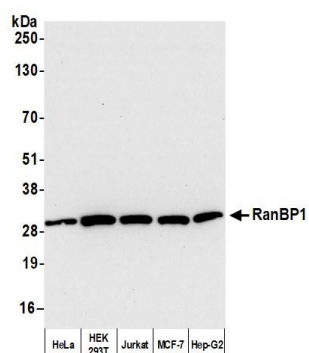
IHC HUMAN CONTROLS Breast Carcinoma, Colon Carcinoma, Ovarian Carcinoma

ADDITIONAL INFO <https://www.bethyl.com/product/A300-513A>

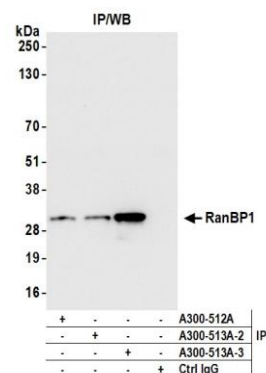
Use the link above to view SDS, a current list of citations, and other product specific information.

IP-western blot protocol: https://www.bethyl.com/content/protocol_IP_WB

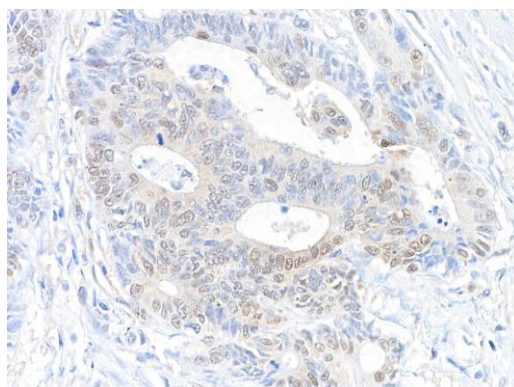
This document certifies that this product has met all of the quality control standards defined by Bethyl Laboratories, Inc.
Eric McIntush, PhD | Chief Scientific Officer Date: October 19, 2020



Detection of human RanBP1 by western blot. *Samples:* Whole cell lysate (5 μ g) from HeLa, HEK293T, Jurkat, MCF-7, and Hep-G2 cells prepared using NETN lysis buffer. ***Antibody:*** Affinity purified rabbit anti-RanBP1 antibody A300-513A Lot 3 used for WB at 0.04 μ g/ml. ***Detection:*** Chemiluminescence with an exposure time of 10 seconds.



Detection of human RanBP1 by western blot of immunoprecipitates. *Samples:* Whole cell lysate (1.0 mg per IP reaction; 20% of IP loaded) from HEK293T cells prepared using NETN lysis buffer. ***Antibodies:*** Affinity purified rabbit anti-RanBP1 antibody A300-513A Lot 3 used for IP at 6 μ g per reaction. RanBP1 was also immunoprecipitated by a previous lot of this antibody (A300-513A Lot 2) and rabbit anti-RanBP1 antibody A300-512A. For blotting immunoprecipitated RanBP1, A300-513A was used at 0.04 μ g/ml. ***Detection:*** Chemiluminescence with an exposure time of 3 seconds.



Detection of human RanBP1 by immunohistochemistry. *Sample:* FFPE section of human colon carcinoma. ***Antibody:*** Affinity purified rabbit anti-RanBP1 (A300-513A Lot 3) used at a dilution of 1:5,000 (0.2 μ g/ml). ***Detection:*** DAB