



SZABO SCANDIC

Part of Europa Biosite

Produktinformation



Forschungsprodukte & Biochemikalien



Zellkultur & Verbrauchsmaterial



Diagnostik & molekulare Diagnostik



Laborgeräte & Service

Weitere Information auf den folgenden Seiten!
See the following pages for more information!



Lieferung & Zahlungsart

siehe unsere [Liefer- und Versandbedingungen](#)

Zuschläge

- Mindermengenzuschlag
- Trockeneiszuschlag
- Gefahrgutzuschlag
- Expressversand

SZABO-SCANDIC HandelsgmbH

Quellenstraße 110, A-1100 Wien

T. +43(0)1 489 3961-0

F. +43(0)1 489 3961-7

mail@szabo-scandic.com

www.szabo-scandic.com

[linkedin.com/company/szaboscandic](https://www.linkedin.com/company/szaboscandic) 

DNA-PKcs Antibody

Rabbit Polyclonal

Antigen Affinity Purified

Protein ID NP_008835.5

Catalog No. A300-518A-T

GeneID 5591

Lot No. A300-518A-T-1



APPLICATIONS WB, IP, IHC

SPECIES REACTIVITY Human

AMOUNT 20 µl (2 blots)

CONCENTRATION 100 µg/ml

STORAGE/SHELF LIFE 2 - 8° C / 1 year from date of receipt

PHYSICAL STATE Liquid

BUFFER Tris-buffered Saline containing 0.1% BSA and 0.09% Sodium Azide

ISOTYPE IgG

ORIGIN USA

PRODUCTION PROCEDURES Antibody was affinity purified using an epitope specific to DNA-PKcs immobilized on solid support.

The epitope recognized by A300-518A-T maps to a region between residues 2100 and 2150 of human DNA-Dependent Protein Kinase, catalytic subunit using the numbering given in entry NP_008835.5 (GeneID 5591).

APPLICATIONS Centrifuge tube to remove product from lid. Optimal working dilutions should be determined experimentally by the investigator. Prepare working dilution immediately before use.

Western Blot 1:1000

Immunoprecipitation The antibody contained within A300-518A-T has been qualified for use in immunoprecipitation; however, we recommend using the alternative formulation of this antibody found as product A300-518A.

Immunohistochemistry 1:50 - 1:250. Epitope retrieval with citrate buffer pH 6.0 is recommended for FFPE tissue sections.

APPLICATION NOTES Western blot of immunoprecipitates performed using Normal Pig Serum (Cat. No. S100-020), Goat anti-Rabbit Light Chain HRP Conjugate (Cat. No. A120-113P) and 3-8% SDS-PAGE (link to IP-western blot protocol in Additional Info section below).

Western blot of lysates performed using standard western blot reagents and 3-8% SDS-PAGE.

ADDITIONAL INFO

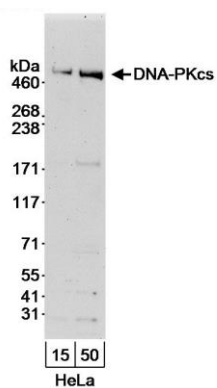
<https://www.bethyl.com/product/A300-518A-T>

Use the link above to view SDS, a current list of citations, and other product specific information.

IP-western blot protocol: https://www.bethyl.com/content/protocol_IP_WB

This document certifies that this product has met all of the quality control standards defined by Bethyl Laboratories, Inc.
Eric McIntush, PhD | Chief Scientific Officer

Date: June 21, 2019



Detection of human DNA-PKcs by western blot. *Samples:* Whole cell lysate (15 and 50 μ g) from HeLa cells. *Antibody:* Affinity purified rabbit anti-DNA-PKcs antibody A300-518A-T used at 1:1000. *Detection:* Chemiluminescence with an exposure time of 3 minutes.