



SZABO SCANDIC

Part of Europa Biosite

Produktinformation



Forschungsprodukte & Biochemikalien



Zellkultur & Verbrauchsmaterial



Diagnostik & molekulare Diagnostik



Laborgeräte & Service

Weitere Information auf den folgenden Seiten!
See the following pages for more information!



Lieferung & Zahlungsart

siehe unsere [Liefer- und Versandbedingungen](#)

Zuschläge

- Mindermengenzuschlag
- Trockeneiszuschlag
- Gefahrgutzuschlag
- Expressversand

SZABO-SCANDIC HandelsgmbH

Quellenstraße 110, A-1100 Wien

T. +43(0)1 489 3961-0

F. +43(0)1 489 3961-7

mail@szabo-scandic.com

www.szabo-scandic.com

[linkedin.com/company/szaboscandic](https://www.linkedin.com/company/szaboscandic) 

DNA-PKcs Antibody

Rabbit Polyclonal

Antigen Affinity Purified

Protein ID NP_008835.5

Catalog No. A300-518A

GeneID 5591

Lot No. A300-518A-1



APPLICATIONS WB, IP, IHC

SPECIES REACTIVITY Human

AMOUNT 100 µl

CONCENTRATION 200 µg/ml

STORAGE/SHELF LIFE 2 - 8° C / 1 year from date of receipt

PHYSICAL STATE Liquid

BUFFER Tris-buffered Saline containing 0.1% BSA and 0.09% Sodium Azide

ISOTYPE IgG

ORIGIN USA

PRODUCTION PROCEDURES Antibody was affinity purified using an epitope specific to DNA-PKcs immobilized on solid support.

The epitope recognized by A300-518A maps to a region between residues 2100 and 2150 of human DNA-Dependent Protein Kinase, catalytic subunit using the numbering given in entry NP_008835.5 (GeneID 5591).

Immunoglobulin concentration was determined by extinction coefficient: absorbance at 280 nm of 1.4 equals 1.0 mg of IgG.

APPLICATIONS Centrifuge tube to remove product from lid. Optimal working dilutions should be determined experimentally by the investigator. Prepare working dilution immediately before use.

Western Blot 1:1,000 – 1:10,000

Immunoprecipitation A300-518A is less efficient than A300-516A, A300-517A or A300-519A.

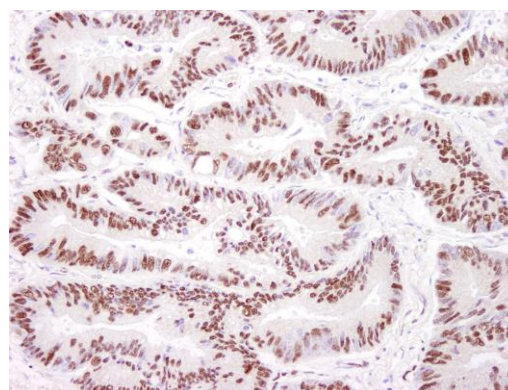
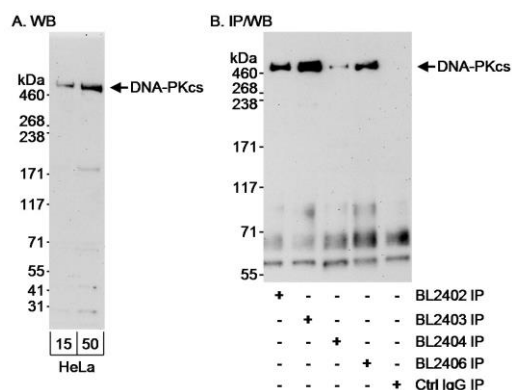
Immunohistochemistry 1:100 – 1:500. Epitope retrieval with citrate buffer pH 6.0 is recommended for FFPE tissue sections.

APPLICATION NOTES Western blot of immunoprecipitates performed using Normal Pig Serum (Cat. No. S100-020), Goat anti-Rabbit Light Chain HRP Conjugate (Cat. No. A120-113P) and 3-8% SDS-PAGE (link to IP-western blot protocol in Additional Info section below).

IHC HUMAN CONTROLS Western blot of lysates performed using standard western blot reagents and 3-8% SDS-PAGE. Breast Carcinoma, Colon Carcinoma, Ovarian Carcinoma, Prostate Carcinoma, Testicular Seminoma

ADDITIONAL INFO <https://www.bethyl.com/product/A300-518A>
Use the link above to view SDS, a current list of citations, and other product specific information.
IP-western blot protocol: https://www.bethyl.com/content/protocol_IP_WB

This document certifies that this product has met all of the quality control standards defined by Bethyl Laboratories, Inc.
Eric McIntush, PhD | Chief Scientific Officer Date: June 21, 2019



Detection of human DNA-PKcs by western blot and immunoprecipitation. *Samples:* Whole cell lysate (15 and 50 µg for WB; 1 mg for IP) from HeLa cells. *Antibodies:* Affinity purified rabbit anti-DNA-PKcs antibody BL2404 (Cat. No. A300-518A) used at 0.1 µg/ml for WB (A and B) and at 3 µg/mg lysate for IP (B). DNA-PKcs was also immunoprecipitated using rabbit anti-DNA-PKcs antibodies BL2402 (Cat. No. A300-516A), BL2403 (Cat. No. A300-517A) and BL2406 (Cat. No. A300-519A). *Detection:* Chemiluminescence with an exposure time of 3 minutes.

Detection of human DNA-PKcs by immunohistochemistry. *Sample:* FFPE section of human lung carcinoma. *Antibody:* Affinity purified rabbit anti-DNA-PKcs (Cat. No. A300-518A) used at a dilution of 1:200 (1 µg/ml). *Detection:* DAB