



# SZABO SCANDIC

Part of Europa Biosite

## Produktinformation



Forschungsprodukte & Biochemikalien



Zellkultur & Verbrauchsmaterial



Diagnostik & molekulare Diagnostik



Laborgeräte & Service

Weitere Information auf den folgenden Seiten!  
See the following pages for more information!



### Lieferung & Zahlungsart

siehe unsere [Liefer- und Versandbedingungen](#)

### Zuschläge

- Mindermengenzuschlag
- Trockeneiszuschlag
- Gefahrgutzuschlag
- Expressversand

### SZABO-SCANDIC HandelsgmbH

Quellenstraße 110, A-1100 Wien

T. +43(0)1 489 3961-0

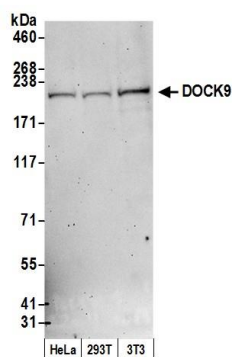
F. +43(0)1 489 3961-7

[mail@szabo-scandic.com](mailto:mail@szabo-scandic.com)

[www.szabo-scandic.com](http://www.szabo-scandic.com)

[linkedin.com/company/szaboscandic](https://www.linkedin.com/company/szaboscandic) 



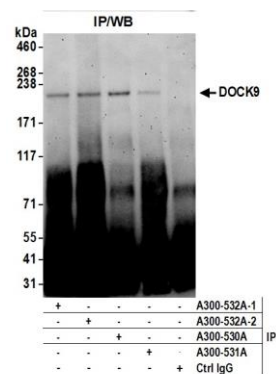


#### Detection of human and mouse DOCK9 by western blot.

**Samples:** Whole cell lysate (50 µg) from HeLa, HEK293T, and mouse NIH 3T3 cells prepared using NETN lysis buffer.

**Antibody:** Affinity purified rabbit anti-DOCK9 antibody A300-532A (lot A300-532A-2) used for WB at 1 µg/ml.

**Detection:** Chemiluminescence with an exposure time of 3 minutes.



#### Detection of human DOCK9 by western blot of immunoprecipitates.

**Samples:** Whole cell lysate (0.5 or 1.0 mg per IP reaction; 20% of IP loaded) from HeLa cells prepared using NETN lysis buffer.

**Antibodies:** Affinity purified rabbit anti-DOCK9 antibody A300-532A (lot A300-532A-2) used for IP at 6 µg per reaction. DOCK9 was also immunoprecipitated by a previous lot of this antibody (lot A300-532A-1) and rabbit anti-DOCK9 antibodies A300-530A and A300-531A. **Detection:** Chemiluminescence with an exposure time of 3 minutes.