



# SZABO SCANDIC

Part of Europa Biosite

## Produktinformation



Forschungsprodukte & Biochemikalien



Zellkultur & Verbrauchsmaterial



Diagnostik & molekulare Diagnostik



Laborgeräte & Service

Weitere Information auf den folgenden Seiten!  
See the following pages for more information!



### Lieferung & Zahlungsart

siehe unsere [Liefer- und Versandbedingungen](#)

### Zuschläge

- Mindermengenzuschlag
- Trockeneiszuschlag
- Gefahrgutzuschlag
- Expressversand

### SZABO-SCANDIC HandelsgmbH

Quellenstraße 110, A-1100 Wien

T. +43(0)1 489 3961-0

F. +43(0)1 489 3961-7

[mail@szabo-scandic.com](mailto:mail@szabo-scandic.com)

[www.szabo-scandic.com](http://www.szabo-scandic.com)

[linkedin.com/company/szaboscandic](https://www.linkedin.com/company/szaboscandic) 

# Pds5B Antibody

Rabbit Polyclonal

Antigen Affinity Purified      Protein ID    CAB69911.1  
Catalog No.    A300-537A-T      GeneID      23047  
Lot No.      A300-537A-T-2



**APPLICATIONS**      WB, IP, IHC, IHC-IF  
**SPECIES REACTIVITY**      Human, Mouse  
**AMOUNT**      20 µl (2 blots)  
**CONCENTRATION**      40 µg/ml  
**STORAGE/SHELF LIFE**      2 - 8° C / 1 year from date of receipt  
**PHYSICAL STATE**      Liquid  
**BUFFER**      Tris-buffered Saline containing 0.1% BSA and 0.09% Sodium Azide  
**ISOTYPE**      IgG  
**ORIGIN**      USA  
**PRODUCTION PROCEDURES**      Antibody was affinity purified using an epitope specific to Pds5B immobilized on solid support.

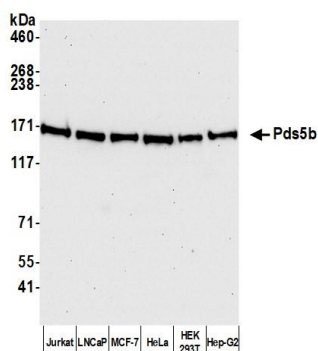
The epitope recognized by A300-537A-T maps to a region between residues 1200 and 1250 of human Precocious Dissociation of Sisters-5B using the numbering given in entry CAB69911.1 (GeneID 23047).

**APPLICATIONS**      Centrifuge tube to remove product from lid. Optimal working dilutions should be determined experimentally by the investigator. Prepare working dilution immediately before use.

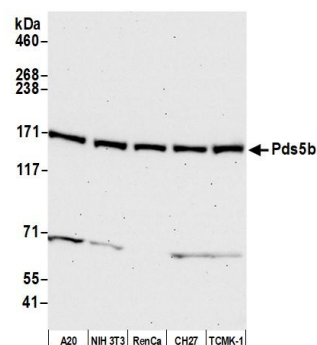
Western Blot      1:1000  
Immunoprecipitation      The antibody contained within A300-537A-T has been qualified for use in immunoprecipitation; however, we recommend using the alternative formulation of this antibody found as product A300-537A.  
Immunohistochemistry      1:20 - 1:100. Epitope retrieval with citrate buffer pH 6.0 is recommended for FFPE tissue sections.  
Immunofluorescence (IHC)      1:20 - 1:100. Epitope retrieval with citrate buffer pH 6.0 is recommended for FFPE tissue sections.

**ADDITIONAL INFO**      <https://www.bethyl.com/product/A300-537A-T>  
Use the link above to view SDS, a current list of citations, and other product specific information.  
IP-western blot protocol: [https://www.bethyl.com/content/protocol\\_IP\\_WB](https://www.bethyl.com/content/protocol_IP_WB)

This document certifies that this product has met all of the quality control standards defined by Bethyl Laboratories, Inc.  
Eric McIntush, PhD | Chief Scientific Officer      Date: March 5, 2020



**Detection of human Pds5b by western blot.** *Samples:* Whole cell lysate (50  $\mu$ g) from Jurkat, LNCaP, MCF-7, HeLa, HEK293T, and Hep-G2 cells prepared using NETN lysis buffer. *Antibody:* Affinity purified rabbit anti-Pds5b antibody A300-537A-T (lot A300-537A-T-2) used for WB at 1:1000. *Detection:* Chemiluminescence with an exposure time of 30 seconds.



**Detection of mouse Pds5b by western blot.** *Samples:* Whole cell lysate (50  $\mu$ g) from A20, NIH 3T3, RenCa, CH27, and TCMK-1 cells prepared using NETN lysis buffer. *Antibody:* Affinity purified rabbit anti-Pds5b antibody A300-537A-T (lot A300-537A-T-2) used for WB at 1:1000. *Detection:* Chemiluminescence with an exposure time of 30 seconds.