



SZABO SCANDIC

Part of Europa Biosite

Produktinformation



Forschungsprodukte & Biochemikalien



Zellkultur & Verbrauchsmaterial



Diagnostik & molekulare Diagnostik



Laborgeräte & Service

Weitere Information auf den folgenden Seiten!
See the following pages for more information!



Lieferung & Zahlungsart

siehe unsere [Liefer- und Versandbedingungen](#)

Zuschläge

- Mindermengenzuschlag
- Trockeneiszuschlag
- Gefahrgutzuschlag
- Expressversand

SZABO-SCANDIC HandelsgmbH

Quellenstraße 110, A-1100 Wien

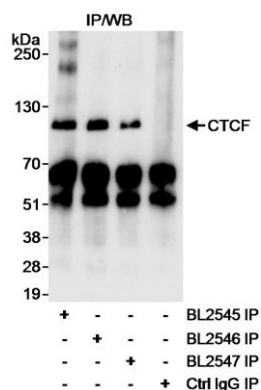
T. +43(0)1 489 3961-0

F. +43(0)1 489 3961-7

mail@szabo-scandic.com

www.szabo-scandic.com

[linkedin.com/company/szaboscandic](https://www.linkedin.com/company/szaboscandic) 



immunoprecipitation of human CTCF. *Samples:* Whole cell lysate (1 mg for IP; 1/4 of IP loaded/lane) from MCF-7 cells. *Antibodies:* Affinity purified rabbit anti-CTCF antibody BL2545 (Cat. No. A300-542A) used at 3 $\mu\text{g}/\text{mg}$ lysate for IP. Human CTCF was also immunoprecipitated using affinity purified rabbit anti-CTCF antibodies BL2546 (Cat. No. A300-543A) and BL2547 (Cat. No. A300-544A). CTCF was blotted using BL2546 at 0.03 $\mu\text{g}/\text{ml}$. *Detection:* Chemiluminescence with exposure times of 10 seconds.