



SZABO SCANDIC

Part of Europa Biosite

Produktinformation



Forschungsprodukte & Biochemikalien



Zellkultur & Verbrauchsmaterial



Diagnostik & molekulare Diagnostik



Laborgeräte & Service

Weitere Information auf den folgenden Seiten!
See the following pages for more information!



Lieferung & Zahlungsart

siehe unsere [Liefer- und Versandbedingungen](#)

Zuschläge

- Mindermengenzuschlag
- Trockeneiszuschlag
- Gefahrgutzuschlag
- Expressversand

SZABO-SCANDIC HandelsgmbH

Quellenstraße 110, A-1100 Wien

T. +43(0)1 489 3961-0

F. +43(0)1 489 3961-7

mail@szabo-scandic.com

www.szabo-scandic.com

[linkedin.com/company/szaboscandic](https://www.linkedin.com/company/szaboscandic)

CTCF Antibody

Rabbit Polyclonal

Antigen Affinity Purified Protein ID NP_006556.1

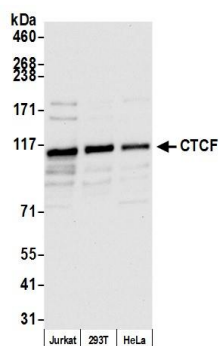
Catalog No. A300-543A-T GeneID 10664

Lot No. A300-543A-T-6

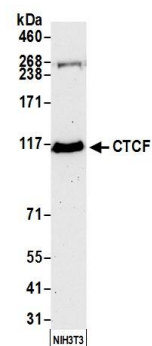


| | |
|------------------------------|--|
| APPLICATIONS | WB, IP, IHC |
| SPECIES REACTIVITY | Human, Mouse |
| PRESUMED REACTIVITY | Based on 100% sequence identity, this antibody is predicted to react with Rat |
| AMOUNT | 20 µl (2 blots) |
| CONCENTRATION | 20 µg/ml |
| STORAGE/SHELF LIFE | 2 - 8° C / 1 year from date of receipt |
| PHYSICAL STATE | Liquid |
| BUFFER | Tris-buffered Saline containing 0.1% BSA and 0.09% Sodium Azide |
| ISOTYPE | IgG |
| ORIGIN | USA |
| PRODUCTION PROCEDURES | Antibody was affinity purified using an epitope specific to CTCF immobilized on solid support. The epitope recognized by A300-543A-T maps to a region between residues 650 and 700 of human CCCTC-binding factor using the numbering given in entry NP_006556.1 (GeneID 10664). |
| APPLICATIONS | Centrifuge tube to remove product from lid. Optimal working dilutions should be determined experimentally by the investigator. Prepare working dilution immediately before use. Western Blot 1:1000 Immunoprecipitation The antibody contained within A300-543A-T has been qualified for use in immunoprecipitation; however, we recommend using the alternative formulation of this antibody found as product A300-543A. Immunohistochemistry 1:50 to 1:200. Epitope retrieval with Tris-EDTA pH9.0 is recommended for FFPE tissue sections. |
| APPLICATION NOTES | Western blot of immunoprecipitates performed using Normal Pig Serum (Cat. No. S100-020), Goat anti-Rabbit Light Chain HRP Conjugate (Cat. No. A120-113P) and 4-8% SDS-PAGE (link to IP-western blot protocol in Additional Info section below). Western blot of lysates performed using standard western blot reagents and 4-8% SDS-PAGE. |
| ADDITIONAL INFO | https://www.bethyl.com/product/A300-543A-T Use the link above to view SDS, a current list of citations, and other product specific information. IP-western blot protocol: https://www.bethyl.com/content/protocol_IP_WB |

This document certifies that this product has met all of the quality control standards defined by Bethyl Laboratories, Inc.
Eric McIntush, PhD | Chief Scientific Officer Date: June 21, 2019



Detection of human CTCF by western blot. *Samples:* Whole cell lysate (50 µg) from Jurkat, HEK293T, and HeLa cells prepared using NETN lysis buffer. *Antibody:* Affinity purified rabbit anti-CTCF antibody A300-543A-T (lot A300-543A-T-6) used for WB at 1:1000. *Detection:* Chemiluminescence with an exposure time of 10 seconds.



Detection of mouse CTCF by western blot. *Samples:* Whole cell lysate (50 µg) from NIH 3T3 cells prepared using NETN lysis buffer. *Antibody:* Affinity purified rabbit anti-CTCF antibody A300-543A-T (lot A300-543A-T-6) used for WB at 1:1000. *Detection:* Chemiluminescence with an exposure time of 75 seconds.