



SZABO SCANDIC

Part of Europa Biosite

Produktinformation



Forschungsprodukte & Biochemikalien



Zellkultur & Verbrauchsmaterial



Diagnostik & molekulare Diagnostik



Laborgeräte & Service

Weitere Information auf den folgenden Seiten!
See the following pages for more information!



Lieferung & Zahlungsart

siehe unsere [Liefer- und Versandbedingungen](#)

Zuschläge

- Mindermengenzuschlag
- Trockeneiszuschlag
- Gefahrgutzuschlag
- Expressversand

SZABO-SCANDIC HandelsgmbH

Quellenstraße 110, A-1100 Wien

T. +43(0)1 489 3961-0

F. +43(0)1 489 3961-7

mail@szabo-scandic.com

www.szabo-scandic.com

[linkedin.com/company/szaboscandic](https://www.linkedin.com/company/szaboscandic) 

DDX19 Antibody

Rabbit Polyclonal

Antigen Affinity Purified Protein ID NP_009173.1
Catalog No. A300-547A GeneID 11269
Lot No. A300-547A-1



APPLICATIONS WB, IP, IHC
SPECIES REACTIVITY Human, Mouse
PRESUMED REACTIVITY Based on 100% sequence identity, this antibody is predicted to react with Rat, Zebrafish, X. laevis, X. tropicalis, Bovine, Guinea pig_10141 and Orangutan
AMOUNT 100 μ l
CONCENTRATION 200 μ g/ml
STORAGE/SHELF LIFE 2 - 8 $^{\circ}$ C / 1 year from date of receipt
PHYSICAL STATE Liquid
BUFFER Tris-buffered Saline containing 0.1% BSA and 0.09% Sodium Azide
ISOTYPE IgG
ORIGIN USA
PRODUCTION PROCEDURES Antibody was affinity purified using an epitope specific to DDX19 immobilized on solid support.

The epitope recognized by A300-547A maps to a region between residue 450 and the C-terminus (residue 479) of human DEAD (Asp-Glu-Ala-Asp) box polypeptide 19B using the numbering given in entry NP_009173.1 (GeneID 11269). The epitope is highly conserved with DDX19A (GeneID 55308), but crossreactivity of the antibody with this homolog has not been assessed.

Immunoglobulin concentration was determined by extinction coefficient: absorbance at 280 nm of 1.4 equals 1.0 mg of IgG.

APPLICATIONS Centrifuge tube to remove product from lid. Optimal working dilutions should be determined experimentally by the investigator. Prepare working dilution immediately before use.

Western Blot 1:1,000 - 1:10,000
Immunoprecipitation 2 - 5 μ g/mg lysate
Immunohistochemistry 1:100 - 1:500. Epitope retrieval with Tris-EDTA pH 9.0 is recommended for FFPE tissue sections.

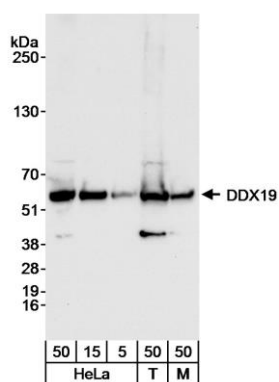
APPLICATION NOTES Western blot of immunoprecipitates performed using Normal Pig Serum (Cat. No. S100-020), Goat anti-Rabbit Light Chain HRP Conjugate (Cat. No. A120-113P) and 4-20% SDS-PAGE (link to IP-western blot protocol in Additional Info section below).

IHC HUMAN CONTROLS Western blot of lysates performed using standard western blot reagents and 4-20% SDS-PAGE. Breast Carcinoma

IHC MOUSE CONTROLS Teratoma

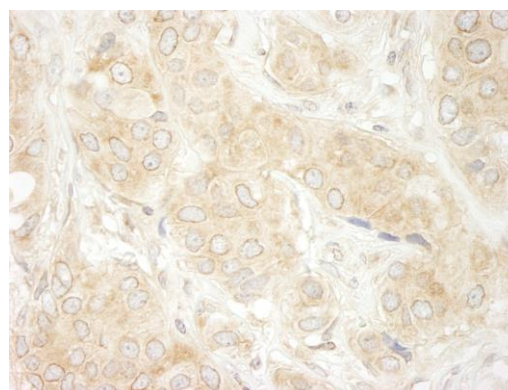
ADDITIONAL INFO <https://www.bethyl.com/product/A300-547A>
Use the link above to view SDS, a current list of citations, and other product specific information. IP-western blot protocol: https://www.bethyl.com/content/protocol_IP_WB

This document certifies that this product has met all of the quality control standards defined by Bethyl Laboratories, Inc.
Eric McIntush, PhD | Chief Scientific Officer Date: June 21, 2019



Detection of human and mouse DDX19 by western blot.

Samples: Whole cell lysate from HeLa (5, 15 and 50 µg), HEK293T (T; 50 µg) and NIH 3T3 (M; 50 µg) cells. *Antibody:* Affinity purified rabbit anti-DDX19 antibody (Cat. No. A300-547A) used at 0.04 µg/ml for WB. *Detection:* Chemiluminescence with an exposure time of 10 seconds.



Detection of human DDX19 by immunohistochemistry.

Sample: FFPE section of human breast carcinoma. *Antibody:* Affinity purified rabbit anti-DDX19 (Cat. No. A300-547A) used at a dilution of 1:200 (1 µg/ml). *Detection:* DAB