



SZABO SCANDIC

Part of Europa Biosite

Produktinformation



Forschungsprodukte & Biochemikalien



Zellkultur & Verbrauchsmaterial



Diagnostik & molekulare Diagnostik



Laborgeräte & Service

Weitere Information auf den folgenden Seiten!
See the following pages for more information!



Lieferung & Zahlungsart

siehe unsere [Liefer- und Versandbedingungen](#)

Zuschläge

- Mindermengenzuschlag
- Trockeneiszuschlag
- Gefahrgutzuschlag
- Expressversand

SZABO-SCANDIC HandelsgmbH

Quellenstraße 110, A-1100 Wien

T. +43(0)1 489 3961-0

F. +43(0)1 489 3961-7

mail@szabo-scandic.com

www.szabo-scandic.com

[linkedin.com/company/szaboscandic](https://www.linkedin.com/company/szaboscandic) 

MLF1 Antibody

Rabbit Polyclonal

Antigen Affinity Purified

Protein ID NP_071888.1

Catalog No. A300-552A

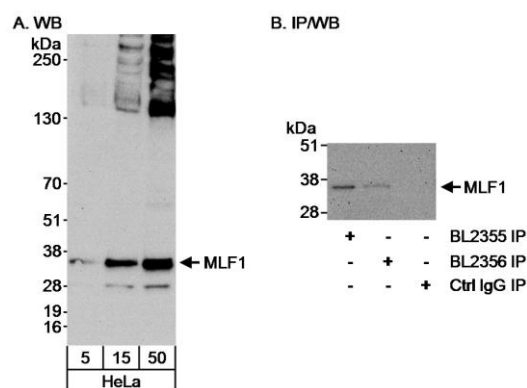
GeneID 4291

Lot No. A300-552A-1



APPLICATIONS	WB, IP				
SPECIES REACTIVITY	Human				
PRESUMED REACTIVITY	Based on 100% sequence identity, this antibody is predicted to react with Orangutan				
AMOUNT	100 µl				
CONCENTRATION	1000 µg/ml				
STORAGE/SHELF LIFE	2 - 8° C / 1 year from date of receipt				
PHYSICAL STATE	Liquid				
BUFFER	Tris-citrate/phosphate buffer, pH 7 to 8 containing 0.09% Sodium Azide				
ISOTYPE	IgG				
ORIGIN	USA				
PRODUCTION PROCEDURES	<p>Antibody was affinity purified using an epitope specific to MLF1 immobilized on solid support.</p> <p>The epitope recognized by A300-552A maps to a region between residue 200 and the C-terminus (residue 256) of human Myeloid Leukemia Factor 1 using the numbering given in entry NP_071888.1 (GeneID 4291).</p> <p>Immunoglobulin concentration was determined by extinction coefficient: absorbance at 280 nm of 1.4 equals 1.0 mg of IgG.</p>				
APPLICATIONS	<p>Centrifuge tube to remove product from lid. Optimal working dilutions should be determined experimentally by the investigator. Prepare working dilution immediately before use.</p> <table><tr><td>Western Blot</td><td>1:5,000 - 1:15,000</td></tr><tr><td>Immunoprecipitation</td><td>2 - 5 µg/mg lysate. While A300-552A did IP MLF1, it was not especially efficient at IP under the conditions used.</td></tr></table>	Western Blot	1:5,000 - 1:15,000	Immunoprecipitation	2 - 5 µg/mg lysate. While A300-552A did IP MLF1, it was not especially efficient at IP under the conditions used.
Western Blot	1:5,000 - 1:15,000				
Immunoprecipitation	2 - 5 µg/mg lysate. While A300-552A did IP MLF1, it was not especially efficient at IP under the conditions used.				
APPLICATION NOTES	<p>Western blot of immunoprecipitates performed using Normal Pig Serum (Cat. No. S100-020), Goat anti-Rabbit Light Chain HRP Conjugate (Cat. No. A120-113P) and 4-20% SDS-PAGE (link to IP-western blot protocol in Additional Info section below).</p> <p>Western blot of lysates performed using standard western blot reagents and 4-20% SDS-PAGE.</p>				
ADDITIONAL INFO	<p>https://www.bethyl.com/product/A300-552A</p> <p>Use the link above to view SDS, a current list of citations, and other product specific information.</p> <p>IP-western blot protocol: https://www.bethyl.com/content/protocol_IP_WB</p>				

This document certifies that this product has met all of the quality control standards defined by Bethyl Laboratories, Inc.
Eric McIntush, PhD | Chief Scientific Officer Date: June 21, 2019



Detection of human MLF1 by western blot and immunoprecipitation. *Samples:* Whole cell lysate (5, 15 and 50 µg for WB; 1 mg for IP, 1/4 of IP loaded) from HeLa cells. *Antibodies:* Affinity purified rabbit anti-MLF1 antibody BL2356 (Cat. No. A300-552A) used at 0.1 µg/ml for WB (A and B) and at 3 µg/mg lysate for IP (B). Human MLF1 was also immunoprecipitated using rabbit anti-MLF1 antibody BL2356, which is to an upstream epitope in MLF1. *Detection:* Chemiluminescence with an exposure times of 30 seconds (A) and 3 minutes (B).