



SZABO SCANDIC

Part of Europa Biosite

Produktinformation



Forschungsprodukte & Biochemikalien



Zellkultur & Verbrauchsmaterial



Diagnostik & molekulare Diagnostik



Laborgeräte & Service

Weitere Information auf den folgenden Seiten!
See the following pages for more information!



Lieferung & Zahlungsart

siehe unsere [Liefer- und Versandbedingungen](#)

Zuschläge

- Mindermengenzuschlag
- Trockeneiszuschlag
- Gefahrgutzuschlag
- Expressversand

SZABO-SCANDIC HandelsgmbH

Quellenstraße 110, A-1100 Wien

T. +43(0)1 489 3961-0

F. +43(0)1 489 3961-7

mail@szabo-scandic.com

www.szabo-scandic.com

[linkedin.com/company/szaboscandic](https://www.linkedin.com/company/szaboscandic) 

BRIP1 /BACH1 Antibody

Rabbit Polyclonal

Antigen Affinity Purified

Protein ID NP_114432.1

Catalog No. A300-560A

GeneID 83990

Lot No. A300-560A-1



APPLICATIONS	IP
SPECIES REACTIVITY	Human
AMOUNT	100 µl
CONCENTRATION	1000 µg/ml
STORAGE/SHELF LIFE	2 – 8° C / 1 year from date of receipt
PHYSICAL STATE	Liquid
BUFFER	Tris-citrate/phosphate buffer, pH 7 to 8 containing 0.09% Sodium Azide
ISOTYPE	IgG
ORIGIN	USA
PRODUCTION PROCEDURES	Antibody was affinity purified using an epitope specific to BRIP1 /BACH1 immobilized on solid support.

The epitope recognized by A300-560A maps to a region between residues 1100 and 1150 of human Brca1 Interacting Protein C-terminal Helicase 1 using the numbering given in entry NP_114432.1 (GeneID 83990).

Immunoglobulin concentration was determined by extinction coefficient: absorbance at 280 nm of 1.4 equals 1.0 mg of IgG.

APPLICATIONS Centrifuge tube to remove product from lid. Optimal working dilutions should be determined experimentally by the investigator. Prepare working dilution immediately before use.

Western Blot Not recommended. Use rabbit anti-BRIP1(BACH1) antibody A300-561A.

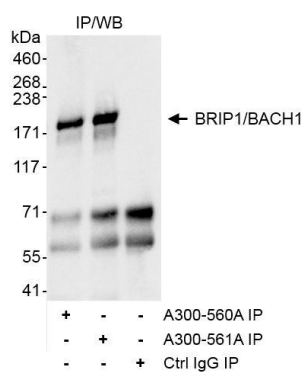
Immunoprecipitation 1 – 4 µg/mg lysate

APPLICATION NOTES Western blot of immunoprecipitates performed using Normal Pig Serum (Cat. No. S100-020), Goat anti-Rabbit Light Chain HRP Conjugate (Cat. No. A120-113P) and 4-8% SDS-PAGE (link to IP-western blot protocol in Additional Info section below).

ADDITIONAL INFO <https://www.bethyl.com/product/A300-560A>

Use the link above to view SDS, a current list of citations, and other product specific information. IP-western blot protocol https://www.bethyl.com/content/protocol_IP_WB

This document certifies that this product has met all of the quality control standards defined by Bethyl Laboratories, Inc.
Eric McIntush, PhD | Chief Scientific Officer Date: October 16, 2019



Detection of human BRIP1/BACH1 by WB of immunoprecipitates. *Samples:* Whole cell lysate (1 mg for IP, 1/4 of IP loaded) from HeLa cells. *Antibody:* Affinity purified rabbit anti-BRIP1/BACH1 antibody A300-560A (lot A300-560A-1) used for IP at 3 μ g/mg lysate. BRIP1/BACH1 was also immunoprecipitated using rabbit anti-BRIP1/BACH1 antibody A300-561A, which is to a downstream epitope, at 3 μ g/mg lysate. BRIP1/BACH1 was blotted using A300-561A at 1 μ g/ml. *Detection:* Chemiluminescence with exposure time of 30 seconds.