



SZABO SCANDIC

Part of Europa Biosite

Produktinformation



Forschungsprodukte & Biochemikalien



Zellkultur & Verbrauchsmaterial



Diagnostik & molekulare Diagnostik



Laborgeräte & Service

Weitere Information auf den folgenden Seiten!
See the following pages for more information!



Lieferung & Zahlungsart

siehe unsere [Liefer- und Versandbedingungen](#)

Zuschläge

- Mindermengenzuschlag
- Trockeneiszuschlag
- Gefahrgutzuschlag
- Expressversand

SZABO-SCANDIC HandelsgmbH

Quellenstraße 110, A-1100 Wien

T. +43(0)1 489 3961-0

F. +43(0)1 489 3961-7

mail@szabo-scandic.com

www.szabo-scandic.com

[linkedin.com/company/szaboscandic](https://www.linkedin.com/company/szaboscandic) 

MST4/MASK Antibody

Rabbit Polyclonal

Antigen Affinity Purified

Protein ID NP_057626.2

Catalog No. A300-566A

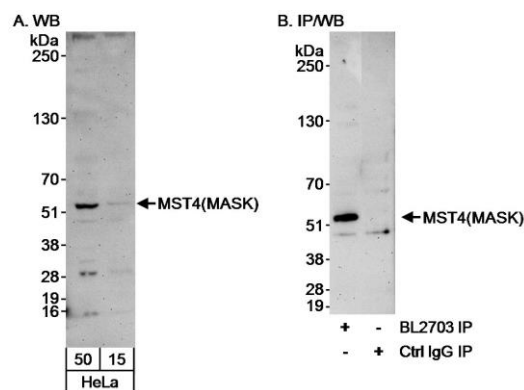
GeneID 51765

Lot No. A300-566A-1



APPLICATIONS	WB				
SPECIES REACTIVITY	Human				
PRESUMED REACTIVITY	Based on 100% sequence identity, this antibody is predicted to react with Mouse				
AMOUNT	100 µl				
CONCENTRATION	200 µg/ml				
STORAGE/SHELF LIFE	2 - 8° C / 1 year from date of receipt				
PHYSICAL STATE	Liquid				
BUFFER	Tris-buffered Saline containing 0.1% BSA and 0.09% Sodium Azide				
ISOTYPE	IgG				
ORIGIN	USA				
PRODUCTION PROCEDURES	<p>Antibody was affinity purified using an epitope specific to MST4/MASK immobilized on solid support.</p> <p>The epitope recognized by A300-566A maps to a region between residue 375 and the C-terminus (residue 416) of human Mammalian Ste20-like Kinase 4 (Mst3 and SOK1-related kinase) using the numbering given in entry NP_057626.2 (GeneID 51765).</p> <p>Immunoglobulin concentration was determined by extinction coefficient: absorbance at 280 nm of 1.4 equals 1.0 mg of IgG.</p>				
APPLICATIONS	<p>Centrifuge tube to remove product from lid. Optimal working dilutions should be determined experimentally by the investigator. Prepare working dilution immediately before use.</p> <table><tr><td>Western Blot</td><td>1:1,000 - 1:10,000</td></tr><tr><td>Immunoprecipitation</td><td>Not recommended. Use rabbit anti-MST4(MASK) antibody A300-565A.</td></tr></table>	Western Blot	1:1,000 - 1:10,000	Immunoprecipitation	Not recommended. Use rabbit anti-MST4(MASK) antibody A300-565A.
Western Blot	1:1,000 - 1:10,000				
Immunoprecipitation	Not recommended. Use rabbit anti-MST4(MASK) antibody A300-565A.				
APPLICATION NOTES	Western blot of lysates performed using standard western blot reagents and 4-20% SDS-PAGE.				
ADDITIONAL INFO	<p>https://www.bethyl.com/product/A300-566A</p> <p>Use the link above to view SDS, a current list of citations, and other product specific information.</p>				

This document certifies that this product has met all of the quality control standards defined by Bethyl Laboratories, Inc.
Eric McIntush, PhD | Chief Scientific Officer Date: June 21, 2019



Detection of human MST4(MASK) by western blot and immunoprecipitation. *Samples:* Whole cell lysate (15 and 50 µg for WB in A; 1 mg for IP, 1/4 of IP loaded in B) from HeLa cells. *Antibodies:* Affinity purified rabbit anti-MST4(MASK) antibody BL2704 (Cat. No. A300-566A) used at 0.04 µg/ml (A) and 1 µg/ml (B) for WB. MST4(MASK) was immunoprecipitated using rabbit anti-MST4(MASK) antibody BL2703 (Cat. No. A300-565A), which binds an upstream epitope, at 3 µg/mg lysate. *Detection:* Chemiluminescence with exposure times of 3 minutes (A and B).