



SZABO SCANDIC

Part of Europa Biosite

Produktinformation



Forschungsprodukte & Biochemikalien



Zellkultur & Verbrauchsmaterial



Diagnostik & molekulare Diagnostik



Laborgeräte & Service

Weitere Information auf den folgenden Seiten!
See the following pages for more information!



Lieferung & Zahlungsart

siehe unsere [Liefer- und Versandbedingungen](#)

Zuschläge

- Mindermengenzuschlag
- Trockeneiszuschlag
- Gefahrgutzuschlag
- Expressversand

SZABO-SCANDIC HandelsgmbH

Quellenstraße 110, A-1100 Wien

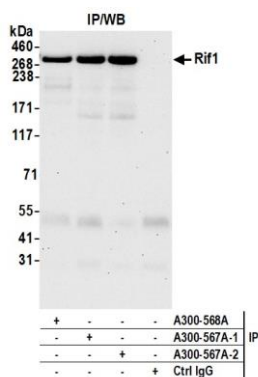
T. +43(0)1 489 3961-0

F. +43(0)1 489 3961-7

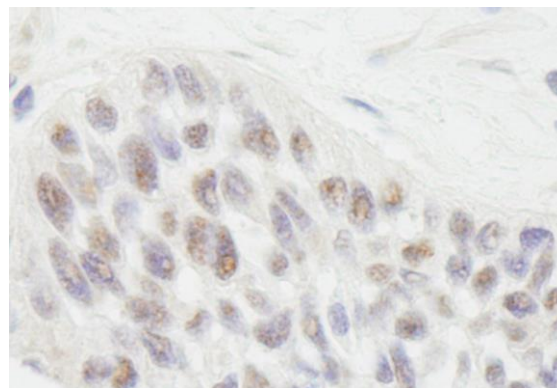
mail@szabo-scandic.com

www.szabo-scandic.com

[linkedin.com/company/szaboscandic](https://www.linkedin.com/company/szaboscandic) 



Detection of human Rif1 by western blot of immunoprecipitates. *Samples:* Whole cell lysate (1.0 mg per IP reaction; 20% of IP loaded) from HeLa cells prepared using NETN lysis buffer. *Antibodies:* Affinity purified rabbit anti-Rif1 antibody (A300-567A-T lot 2) used for IP at 6 μ g per reaction. Rif1 was also immunoprecipitated by a previous lot of this antibody (A300-567A-T lot 1) and a second antibody against a different epitope of Rif1 (A300-568A). For blotting immunoprecipitated Rif1, A300-567A-T was used at 0.1 μ g/ml. *Detection:* Chemiluminescence with an exposure time of 30 seconds.



Detection of human RIF1 by immunohistochemistry. *Samples:* FFPE section of human laryngeal squamous cell carcinoma. *Antibody:* Affinity purified rabbit anti-RIF1 (Cat. No. A300-567A-T Lot1) used at a dilution of 1:1,000 (1 μ g/ml). *Detection:* DAB