



SZABO SCANDIC

Part of Europa Biosite

Produktinformation



Forschungsprodukte & Biochemikalien



Zellkultur & Verbrauchsmaterial



Diagnostik & molekulare Diagnostik



Laborgeräte & Service

Weitere Information auf den folgenden Seiten!
See the following pages for more information!



Lieferung & Zahlungsart

siehe unsere [Liefer- und Versandbedingungen](#)

Zuschläge

- Mindermengenzuschlag
- Trockeneiszuschlag
- Gefahrgutzuschlag
- Expressversand

SZABO-SCANDIC HandelsgmbH

Quellenstraße 110, A-1100 Wien

T. +43(0)1 489 3961-0

F. +43(0)1 489 3961-7

mail@szabo-scandic.com

www.szabo-scandic.com

[linkedin.com/company/szaboscandic](https://www.linkedin.com/company/szaboscandic) 

RIF1 Antibody

Rabbit Polyclonal

Antigen Affinity Purified

Protein ID NP_060621.3

Catalog No. A300-567A

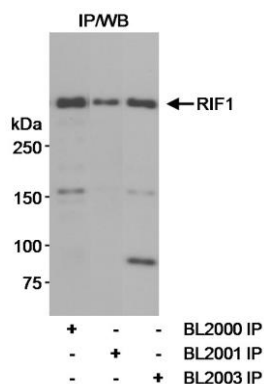
GeneID 55183

Lot No. A300-567A-1

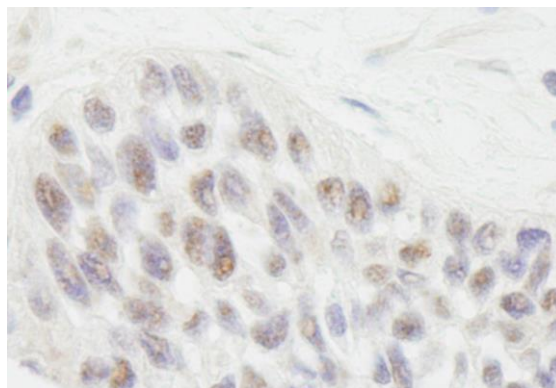


APPLICATIONS	IP, IHC
SPECIES REACTIVITY	Human
AMOUNT	100 µl
CONCENTRATION	1000 µg/ml
STORAGE/SHELF LIFE	2 - 8° C / 1 year from date of receipt
PHYSICAL STATE	Liquid
BUFFER	Tris-citrate/phosphate buffer, pH 7 to 8 containing 0.09% Sodium Azide
ISOTYPE	IgG
ORIGIN	USA
PRODUCTION PROCEDURES	<p>Antibody was affinity purified using an epitope specific to RIF1 immobilized on solid support.</p> <p>The epitope recognized by A300-567A maps to a region between residues 1 and 50 of human Rap1 Interacting Factor 1 using the numbering given in entry NP_060621.3 (GeneID 55183).</p> <p>Immunoglobulin concentration was determined by extinction coefficient: absorbance at 280 nm of 1.4 equals 1.0 mg of IgG.</p>
APPLICATIONS	<p>Centrifuge tube to remove product from lid. Optimal working dilutions should be determined experimentally by the investigator. Prepare working dilution immediately before use.</p> <p>Western Blot Not recommended. Use rabbit anti-RIF1 Antibodies A300-568A or A300-569A.</p> <p>Immunoprecipitation 1 - 5 µg/mg lysate</p> <p>Immunohistochemistry 1:500 - 1:2,000. Epitope retrieval with citrate buffer pH 6.0 is recommended for FFPE tissue sections.</p>
APPLICATION NOTES	Western blot of immunoprecipitates performed using Normal Pig Serum (Cat. No. S100-020), Goat anti-Rabbit Light Chain HRP Conjugate (Cat. No. A120-113P) and 4-8% SDS-PAGE (link to IP-western blot protocol in Additional Info section below).
IHC HUMAN CONTROLS	Laryngeal Squamous Cell Carcinoma, Small Cell Lung Cancer, Testicular Seminoma
ADDITIONAL INFO	<p>https://www.bethyl.com/product/A300-567A</p> <p>Use the link above to view SDS, a current list of citations, and other product specific information.</p> <p>IP-western blot protocol: https://www.bethyl.com/content/protocol_IP_WB</p>

This document certifies that this product has met all of the quality control standards defined by Bethyl Laboratories, Inc.
Eric McIntush, PhD | Chief Scientific Officer Date: June 21, 2019



Detection of human RIF1 by western blot after immunoprecipitation. *Sample:* Whole cell lysate (1 mg/IP reaction; 1/4 of reaction loaded) from HEK293T cells. *Antibodies:* Affinity purified rabbit anti-RIF1 antibody BL2000 (Cat. No. A300-567A) used at 5 µg/mg lysate for IP. RIF1 was also immunoprecipitated using rabbit anti-RIF1 antibodies BL2001 (Cat. No. A300-568A) and BL2003 (Cat. No. A300-569A) at 5 µg/mg lysate. immunoprecipitated RIF1 was blotted using BL2003 at 0.4 µg/ml. *Detection:* Chemiluminescence with an exposure time of 30 seconds.



Detection of human RIF1 by immunohistochemistry. *Sample:* FFPE section of human laryngeal squamous cell carcinoma. *Antibody:* Affinity purified rabbit anti-RIF1 (Cat. No. A300-567A Lot1) used at a dilution of 1:1,000 (1 µg/ml). *Detection:* DAB