



# SZABO SCANDIC

Part of Europa Biosite

## Produktinformation



Forschungsprodukte & Biochemikalien



Zellkultur & Verbrauchsmaterial



Diagnostik & molekulare Diagnostik



Laborgeräte & Service

Weitere Information auf den folgenden Seiten!  
See the following pages for more information!



### Lieferung & Zahlungsart

siehe unsere [Liefer- und Versandbedingungen](#)

### Zuschläge

- Mindermengenzuschlag
- Trockeneiszuschlag
- Gefahrgutzuschlag
- Expressversand

### SZABO-SCANDIC HandelsgmbH

Quellenstraße 110, A-1100 Wien

T. +43(0)1 489 3961-0

F. +43(0)1 489 3961-7

[mail@szabo-scandic.com](mailto:mail@szabo-scandic.com)

[www.szabo-scandic.com](http://www.szabo-scandic.com)

[linkedin.com/company/szaboscandic](https://www.linkedin.com/company/szaboscandic) 

# RIF1 Antibody

Rabbit Polyclonal

Antigen Affinity Purified

Protein ID NP\_060621.3

Catalog No. A300-568A-T

GeneID 55183

Lot No. A300-568A-T-5

---

<b>APPLICATIONS</b>	WB, IP
<b>SPECIES REACTIVITY</b>	Human
<b>AMOUNT</b>	10 µl
<b>CONCENTRATION</b>	1000 µg/ml
<b>STORAGE/SHELF LIFE</b>	2 – 8°C / 1 year from date of receipt
<b>PHYSICAL STATE</b>	Liquid
<b>BUFFER</b>	Tris-citrate/phosphate buffer, pH 7 to 8 containing 0.09% Sodium Azide
<b>ISOTYPE</b>	IgG
<b>ORIGIN</b>	USA
<b>PRODUCTION PROCEDURES</b>	Antibody was affinity purified using an epitope specific to RIF1 immobilized on solid support.

The epitope recognized by A300-568A-T maps to a region between residues 1425 and 1450 of human Rap1 Interacting Factor 1 using the numbering given in entry NP\_060621.3 (GeneID 55183).

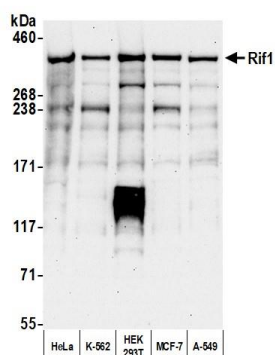
**APPLICATIONS** Centrifuge tube to remove product from lid. Optimal working dilutions should be determined experimentally by the investigator. Prepare working dilution immediately before use.

Western Blot 1:10,000 – 1:25,000

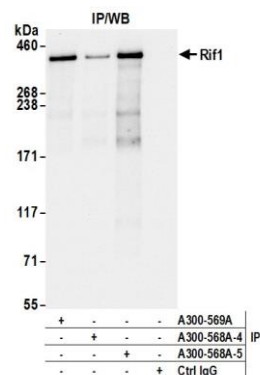
Immunoprecipitation 2 – 10 µg/mg lysate

**ADDITIONAL INFO** <https://www.fortislifesciences.com/p/A300-568A-T>  
Use the link above to view SDS, a current list of citations, and other product specific information.

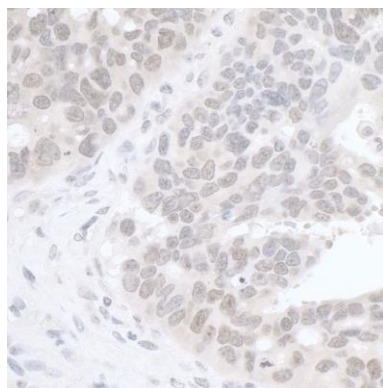
This document certifies that this product has met all of the quality control standards defined by Bethyl Laboratories, Inc.  
Michael Spencer, PhD Date: August 17, 2022



**Detection of human Rif1 by western blot.** *Samples:* Whole cell lysate (25 µg) from HeLa, K-562, HEK293T, MCF-7, and A-549 cells prepared using NETN lysis buffer. *Antibody:* Affinity purified rabbit anti-Rif1 antibody (A300-568A lot 5) used for WB at 0.04 µg/ml. *Detection:* Chemiluminescence with an exposure time of 30 seconds.



**Detection of human Rif1 by western blot of immunoprecipitates.** *Samples:* Whole cell lysate (1.0 mg per IP reaction; 10% of IP loaded) from HeLa cells prepared using NETN lysis buffer. *Antibodies:* Affinity purified rabbit anti-Rif1 antibody (A300-568A lot 5) used for IP at 6 µg per reaction. Rif1 was also immunoprecipitated by a previous lot of this antibody (A300-568A lot 4) and a second antibody against a different epitope of Rif1 (A300-569A). For blotting immunoprecipitated Rif1, A300-568A was used at 0.04 µg/ml. *Detection:* Chemiluminescence with an exposure time of 3 seconds.



**Detection of human RIF1 by immunohistochemistry.**  
*Sample:* FFPE section of human ovarian carcinoma.  
*Antibody:* Affinity purified rabbit anti-RIF1 (Cat. No. A300-568A Lot4) used at a dilution of 1:1,000 (1 µg/ml).  
*Detection:* DAB