



SZABO SCANDIC

Part of Europa Biosite

Produktinformation



Forschungsprodukte & Biochemikalien



Zellkultur & Verbrauchsmaterial



Diagnostik & molekulare Diagnostik



Laborgeräte & Service

Weitere Information auf den folgenden Seiten!
See the following pages for more information!



Lieferung & Zahlungsart

siehe unsere [Liefer- und Versandbedingungen](#)

Zuschläge

- Mindermengenzuschlag
- Trockeneiszuschlag
- Gefahrgutzuschlag
- Expressversand

SZABO-SCANDIC HandelsgmbH

Quellenstraße 110, A-1100 Wien

T. +43(0)1 489 3961-0

F. +43(0)1 489 3961-7

mail@szabo-scandic.com

www.szabo-scandic.com

[linkedin.com/company/szaboscandic](https://www.linkedin.com/company/szaboscandic) 

RIF1 Antibody

Rabbit Polyclonal

Antigen Affinity Purified Protein ID NP_060621.3

Catalog No. A300-568A GeneID 55183

Lot No. A300-568A-5

APPLICATIONS	WB, IP, IHC
SPECIES REACTIVITY	Human
AMOUNT	100 µl
CONCENTRATION	1000 µg/ml
STORAGE/SHELF LIFE	2 – 8°C / 1 year from date of receipt
PHYSICAL STATE	Liquid
BUFFER	Tris-citrate/phosphate buffer, pH 7 to 8 containing 0.09% Sodium Azide
ISOTYPE	IgG
ORIGIN	USA
PRODUCTION PROCEDURES	Antibody was affinity purified using an epitope specific to RIF1 immobilized on solid support.

The epitope recognized by A300-568A maps to a region between residues 1425 and 1450 of human Rap1 Interacting Factor 1 using the numbering given in entry NP_060621.3 (GeneID 55183).

Immunoglobulin concentration was determined by extinction coefficient: absorbance at 280 nm of 1.4 equals 1.0 mg of IgG.

APPLICATIONS Centrifuge tube to remove product from lid. Optimal working dilutions should be determined experimentally by the investigator. Prepare working dilution immediately before use.

Western Blot 1:10,000 – 1:25,000

Immunoprecipitation 2 – 10 µg/mg lysate

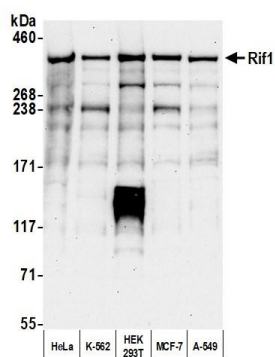
Immunohistochemistry 1:500 – 1:2,000. Epitope retrieval with citrate buffer pH 6.0 is recommended for FFPE tissue sections.

IHC HUMAN CONTROLS Ovarian Carcinoma

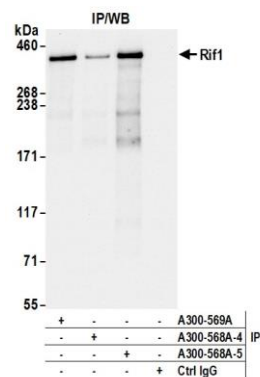
ADDITIONAL INFO <https://www.fortislife.com/p/A300-568A>

Use the link above to view SDS, a current list of citations, and other product specific information.

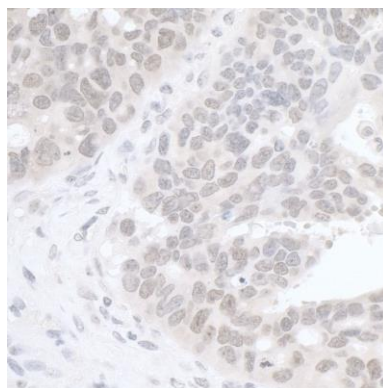
This document certifies that this product has met all of the quality control standards defined by Bethyl Laboratories, Inc.
Michael Spencer, PhD Date: August 17, 2022



Detection of human Rif1 by western blot. *Samples:* Whole cell lysate (25 μ g) from HeLa, K-562, HEK293T, MCF-7, and A-549 cells prepared using NETN lysis buffer. *Antibody:* Affinity purified rabbit anti-Rif1 antibody (A300-568A lot 5) used for WB at 0.04 μ g/ml. *Detection:* Chemiluminescence with an exposure time of 30 seconds.



Detection of human Rif1 by western blot of immunoprecipitates. *Samples:* Whole cell lysate (1.0 mg per IP reaction; 10% of IP loaded) from HeLa cells prepared using NETN lysis buffer. *Antibodies:* Affinity purified rabbit anti-Rif1 antibody (A300-568A lot 5) used for IP at 6 μ g per reaction. Rif1 was also immunoprecipitated by a previous lot of this antibody (A300-568A lot 4) and a second antibody against a different epitope of Rif1 (A300-569A). For blotting immunoprecipitated Rif1, A300-568A was used at 0.04 μ g/ml. *Detection:* Chemiluminescence with an exposure time of 3 seconds.



Detection of human RIF1 by immunohistochemistry.
Sample: FFPE section of human ovarian carcinoma.
Antibody: Affinity purified rabbit anti-RIF1 (Cat. No. A300-568A Lot4) used at a dilution of 1:1,000 (1 μ g/ml).
Detection: DAB