



SZABO SCANDIC

Part of Europa Biosite

Produktinformation



Forschungsprodukte & Biochemikalien



Zellkultur & Verbrauchsmaterial



Diagnostik & molekulare Diagnostik



Laborgeräte & Service

Weitere Information auf den folgenden Seiten!
See the following pages for more information!



Lieferung & Zahlungsart

siehe unsere [Liefer- und Versandbedingungen](#)

Zuschläge

- Mindermengenzuschlag
- Trockeneiszuschlag
- Gefahrgutzuschlag
- Expressversand

SZABO-SCANDIC HandelsgmbH

Quellenstraße 110, A-1100 Wien

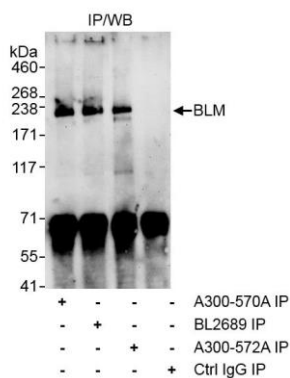
T. +43(0)1 489 3961-0

F. +43(0)1 489 3961-7

mail@szabo-scandic.com

www.szabo-scandic.com

[linkedin.com/company/szaboscandic](https://www.linkedin.com/company/szaboscandic) 



Detection of mouse BLM by western blot of immunoprecipitates. *Samples:* Whole cell lysate (1 mg for IP, 1/4 of IP loaded) from mouse NIH 3T3 cells. *Antibodies:* Affinity purified rabbit anti-BLM antibody A300-570A (lot A300-570A-1) used for IP at 3 μ g/mg lysate. BLM was also immunoprecipitated using rabbit anti-BLM antibodies BL2689 and A300-572A at 3 μ g/mg lysate. immunoprecipitates BLM was blotted using A300-572A at 1 μ g/ml. *Detection:* Chemiluminescence with an exposure time of 3 minutes.