



# SZABO SCANDIC

Part of Europa Biosite

## Produktinformation



Forschungsprodukte & Biochemikalien



Zellkultur & Verbrauchsmaterial



Diagnostik & molekulare Diagnostik



Laborgeräte & Service

Weitere Information auf den folgenden Seiten!  
See the following pages for more information!



### Lieferung & Zahlungsart

siehe unsere [Liefer- und Versandbedingungen](#)

### Zuschläge

- Mindermengenzuschlag
- Trockeneiszuschlag
- Gefahrgutzuschlag
- Expressversand

### SZABO-SCANDIC HandelsgmbH

Quellenstraße 110, A-1100 Wien

T. +43(0)1 489 3961-0

F. +43(0)1 489 3961-7

[mail@szabo-scandic.com](mailto:mail@szabo-scandic.com)

[www.szabo-scandic.com](http://www.szabo-scandic.com)

[linkedin.com/company/szaboscandic](https://www.linkedin.com/company/szaboscandic)

# NF2 Antibody

Rabbit Polyclonal

Antigen Affinity Purified

Protein ID NP\_057502.2

Catalog No. A300-579A

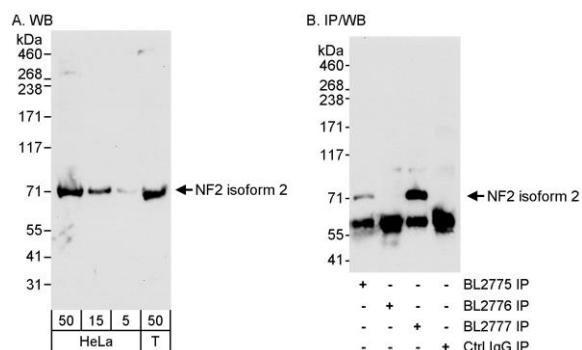
GeneID 4771

Lot No. A300-579A-1



|                              |  |
|------------------------------|--|
| <b>APPLICATIONS</b>          | WB, IP   |
| <b>SPECIES REACTIVITY</b>    | Human  |
| <b>PRESUMED REACTIVITY</b>   | Based on 100% sequence identity, this antibody is predicted to react with Rat  |
| <b>AMOUNT</b>                | 100 µl   |
| <b>CONCENTRATION</b>         | 1000 µg/ml   |
| <b>STORAGE/SHELF LIFE</b>    | 2 - 8° C / 1 year from date of receipt   |
| <b>PHYSICAL STATE</b>        | Liquid   |
| <b>BUFFER</b>                | Tris-citrate/phosphate buffer, pH 7 to 8 containing 0.09% Sodium Azide   |
| <b>ISOTYPE</b>               | IgG  |
| <b>ORIGIN</b>                | USA  |
| <b>PRODUCTION PROCEDURES</b> | <p>Antibody was affinity purified using an epitope specific to NF2 immobilized on solid support.</p> <p>The epitope recognized by A300-579A maps to a region between residue 550 and the C-terminus (residue 590) of human Neurofibromin 2 using the numbering given in entry NP_057502.2 (GeneID 4771). This epitope is common to NF2 isoforms 2, 5 (NP_861966.1), 6 (NP_861967.1) and 7 (NP_861968.1).</p> <p>Immunoglobulin concentration was determined by extinction coefficient: absorbance at 280 nm of 1.4 equals 1.0 mg of IgG.</p> |
| <b>APPLICATIONS</b>          | <p>Centrifuge tube to remove product from lid. Optimal working dilutions should be determined experimentally by the investigator. Prepare working dilution immediately before use.</p> <p>Western Blot                      1:5,000 - 1:15,000</p> <p>Immunoprecipitation            1 - 4 µg/mg lysate</p>  |
| <b>APPLICATION NOTES</b>     | <p>Western blot of immunoprecipitates performed using Normal Pig Serum (Cat. No. S100-020), Goat anti-Rabbit Light Chain HRP Conjugate (Cat. No. A120-113P) and 4-8% SDS-PAGE (link to IP-western blot protocol in Additional Info section below).</p> <p>Western blot of lysates performed using standard western blot reagents and 4-8% SDS-PAGE.</p>  |
| <b>ADDITIONAL INFO</b>       | <p><a href="https://www.bethyl.com/product/A300-579A">https://www.bethyl.com/product/A300-579A</a></p> <p>Use the link above to view SDS, a current list of citations, and other product specific information.</p> <p>IP-western blot protocol: <a href="https://www.bethyl.com/content/protocol_IP_WB">https://www.bethyl.com/content/protocol_IP_WB</a></p>  |

This document certifies that this product has met all of the quality control standards defined by Bethyl Laboratories, Inc.  
Eric McIntush, PhD | Chief Scientific Officer Date: June 21, 2019



**Detection of Isoform 2 of human NF2 by western blot and immunoprecipitation.** *Samples:* Whole cell lysate from HeLa (5, 15, and 15  $\mu$ g for WB; 1 mg for IP, 1/4 of IP reaction loaded) and NIH293 (50  $\mu$ g for WB) cells. *Antibody:* Affinity purified rabbit anti-NF2 antibody BL2777 (Cat. No. A300-579A) used for western blot at 0.1  $\mu$ g/ml (A) and 1  $\mu$ g/ml (B) for IP at 3  $\mu$ g/mg lysate for IP (B). Isoform 2 of NF2 was also immunoprecipitated using rabbit anti-NF2 antibody BL2775, which is to an upstream epitope also found in isoform 1. Isoform 2 was not immunoprecipitated using rabbit anti-NF2 isoform 1 antibody BL2776 (Cat. No. A300-578A). *Detection:* Chemiluminescence with an exposure time of 30 seconds (A and B).