



SZABO SCANDIC

Part of Europa Biosite

Produktinformation



Forschungsprodukte & Biochemikalien



Zellkultur & Verbrauchsmaterial



Diagnostik & molekulare Diagnostik



Laborgeräte & Service

Weitere Information auf den folgenden Seiten!
See the following pages for more information!



Lieferung & Zahlungsart

siehe unsere [Liefer- und Versandbedingungen](#)

Zuschläge

- Mindermengenzuschlag
- Trockeneiszuschlag
- Gefahrgutzuschlag
- Expressversand

SZABO-SCANDIC HandelsgmbH

Quellenstraße 110, A-1100 Wien

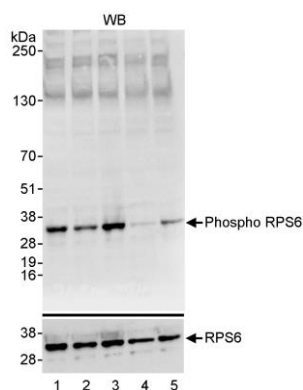
T. +43(0)1 489 3961-0

F. +43(0)1 489 3961-7

mail@szabo-scandic.com

www.szabo-scandic.com

[linkedin.com/company/szaboscandic](https://www.linkedin.com/company/szaboscandic) 



Detection of human Phospho RPS6 (S235/S236) by western blot. *Samples:* Whole cell lysate (35 μ g) from HeLa cells. Treatments consisted of growth in serum containing media (lane 1) or cultured for 24 hours in serum free media (lanes 2 to 5). At 24h, serum was replaced for 1 h (lanes 2 and 3) or serum starvation was continued (lanes 4 and 5) without rapamycin (lanes 3 and 5) with 50nM Rapamycin (lanes 2 and 4). *Antibodies:* Affinity purified rabbit anti-phospho RPS6 (S235/S236) antibody (Cat. No. A300-584A) used at 0.04 μ g/ml (upper panel). The blot was stripped and re-blotted for total RPS6 using affinity purified rabbit anti-RPS6 antibody (Cat. No. A300-557A) at 0.04 μ g/ml. *Detection:* Chemiluminescence with exposure times of 10 seconds (upper panel) or 30 seconds (lower panel).