



SZABO SCANDIC

Part of Europa Biosite

Produktinformation



Forschungsprodukte & Biochemikalien



Zellkultur & Verbrauchsmaterial



Diagnostik & molekulare Diagnostik



Laborgeräte & Service

Weitere Information auf den folgenden Seiten!
See the following pages for more information!



Lieferung & Zahlungsart

siehe unsere [Liefer- und Versandbedingungen](#)

Zuschläge

- Mindermengenzuschlag
- Trockeneiszuschlag
- Gefahrgutzuschlag
- Expressversand

SZABO-SCANDIC HandelsgmbH

Quellenstraße 110, A-1100 Wien

T. +43(0)1 489 3961-0

F. +43(0)1 489 3961-7

mail@szabo-scandic.com

www.szabo-scandic.com

[linkedin.com/company/szaboscandic](https://www.linkedin.com/company/szaboscandic) 

PRKRIR Antibody

Rabbit Polyclonal

Antigen Affinity Purified

Protein ID NP_004696.2

Catalog No. A300-586A

GeneID 5612

Lot No. A300-586A-1



APPLICATIONS	WB, IP, IHC
SPECIES REACTIVITY	Human, Mouse
AMOUNT	100 µl
CONCENTRATION	200 µg/ml
STORAGE/SHELF LIFE	2 - 8° C / 1 year from date of receipt
PHYSICAL STATE	Liquid
BUFFER	Tris-buffered Saline containing 0.1% BSA and 0.09% Sodium Azide
ISOTYPE	IgG
ORIGIN	USA

PRODUCTION PROCEDURES Antibody was affinity purified using an epitope specific to PRKRIR immobilized on solid support.

The epitope recognized by A300-586A maps to a region between residues 150 and 200 of human Protein-Kinase, Interferon-inducible double strand RNA dependent Inhibitor, Repressor of (P58 Repressor) using the numbering given in entry NP_004696.2 (GeneID 5612).

Immunoglobulin concentration was determined by extinction coefficient: absorbance at 280 nm of 1.4 equals 1.0 mg of IgG.

APPLICATIONS Centrifuge tube to remove product from lid. Optimal working dilutions should be determined experimentally by the investigator. Prepare working dilution immediately before use.

Western Blot 1:2,000 - 1:10,000

Immunoprecipitation 1 - 4 µg/mg lysate

Immunohistochemistry 1:100 - 1:1,000. Epitope retrieval with citrate buffer pH 6.0 is recommended for FFPE tissue sections.

APPLICATION NOTES Western blot of immunoprecipitates performed using Normal Pig Serum (Cat. No. S100-020), Goat anti-Rabbit Light Chain HRP Conjugate (Cat. No. A120-113P) and 4-8% SDS-PAGE (link to IP-western blot protocol in Additional Info section below).

IHC HUMAN CONTROLS Western blot of lysates performed using standard western blot reagents and 4-8% SDS-PAGE. Breast Carcinoma, Ovarian Carcinoma, Prostate Carcinoma, Skin Basal Cell Carcinoma

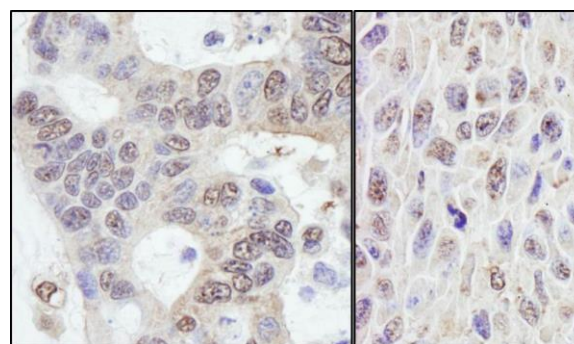
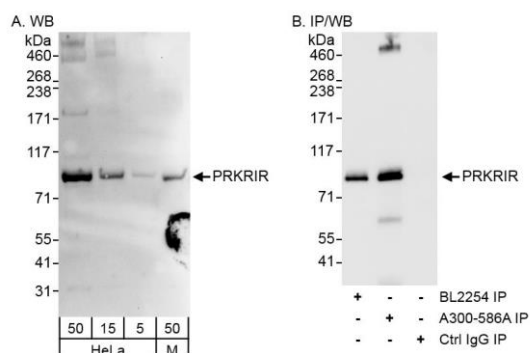
IHC MOUSE CONTROLS Squamous Cell Carcinoma

ADDITIONAL INFO <https://www.bethyl.com/product/A300-586A>

Use the link above to view SDS, a current list of citations, and other product specific information.

IP-western blot protocol: https://www.bethyl.com/content/protocol_IP_WB

This document certifies that this product has met all of the quality control standards defined by Bethyl Laboratories, Inc.
Eric McIntush, PhD | Chief Scientific Officer Date: June 21, 2019



Detection of PRKRIR by western blot and immunoprecipitation. *Samples:* Whole cell lysate from HeLa (5, 15 and 50 μ g for WB; 1 mg for IP; 1/4 of IP reaction loaded) and mouse NIH 3T3 (M; 50 μ g for WB) cells. *Antibodies:* Affinity purified rabbit anti-PRKRIR antibody A300-586A (lot A300-586A-1) used for WB at 0.04 μ g/ml (A) and 1 μ g/ml (B) and used for IP at 3 μ g/mg lysate (B). PRKRIR was also immunoprecipitated using rabbit anti-PRKRIR antibody BL2254 at 3 μ g/mg lysate. *Detection:* Chemiluminescence with exposure times of 30 seconds (A and B).

Detection of human and mouse PRKRIR by immunohistochemistry. *Sample:* FFPE sections of human ovarian carcinoma (left) and mouse squamous cell carcinoma (right). *Antibody:* Affinity purified rabbit anti-PRKRIR (Cat. No. A300-586A Lot1) used at a dilution of 1:1,000 (0.2 μ g/ml) and 1:200 (1 μ g/ml). *Detection:* DAB