



# SZABO SCANDIC

Part of Europa Biosite

## Produktinformation



Forschungsprodukte & Biochemikalien



Zellkultur & Verbrauchsmaterial



Diagnostik & molekulare Diagnostik



Laborgeräte & Service

Weitere Information auf den folgenden Seiten!  
See the following pages for more information!



### Lieferung & Zahlungsart

siehe unsere [Liefer- und Versandbedingungen](#)

### Zuschläge

- Mindermengenzuschlag
- Trockeneiszuschlag
- Gefahrgutzuschlag
- Expressversand

### SZABO-SCANDIC HandelsgmbH

Quellenstraße 110, A-1100 Wien

T. +43(0)1 489 3961-0

F. +43(0)1 489 3961-7

[mail@szabo-scandic.com](mailto:mail@szabo-scandic.com)

[www.szabo-scandic.com](http://www.szabo-scandic.com)

[linkedin.com/company/szaboscandic](https://www.linkedin.com/company/szaboscandic) 

# VCP Antibody

Rabbit Polyclonal

Antigen Affinity Purified	RefSeq ID	NP_009057.1
Catalog No. A300-589A	Uniprot ID	P55072
Lot No. 4	GenelD	7415

---

<b>APPLICATIONS</b>	WB, IP, IHC
<b>SPECIES REACTIVITY</b>	Human, Mouse
<b>PRESUMED REACTIVITY</b>	Based on 100% sequence identity, this antibody is predicted to react with Rat, Bovine and Pig
<b>AMOUNT</b>	100 µl
<b>CONCENTRATION</b>	200 µg/ml
<b>STORAGE/SHELF LIFE</b>	2 – 8°C / 1 year from date of receipt
<b>PHYSICAL STATE</b>	Liquid
<b>BUFFER</b>	Tris-buffered Saline containing 0.1% BSA and 0.09% Sodium Azide
<b>ISOTYPE</b>	IgG
<b>ORIGIN</b>	USA
<b>PRODUCTION PROCEDURES</b>	Antibody was affinity purified using an epitope specific to VCP immobilized on solid support.

The epitope recognized by A300-589A maps to a region between residue 750 and the C-terminus (residue 806) of human Valosin-Containing Protein using the numbering given in entry NP\_009057.1 (GenelD 7415).

Immunoglobulin concentration was determined by extinction coefficient: absorbance at 280 nm of 1.4 equals 1.0 mg of IgG.

<b>APPLICATIONS</b>	Centrifuge tube to remove product from lid. Optimal working dilutions should be determined experimentally by the investigator. Prepare working dilution immediately before use.
	Western Blot 1:2,000 – 1:10,000
	Immunoprecipitation 2 – 10 µg/mg lysate
	Immunohistochemistry 1:500 to 1:2,000. Epitope retrieval with citrate buffer pH6.0 is recommended for FFPE tissue sections.

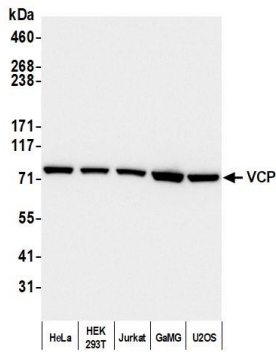
<b>IHC HUMAN CONTROLS</b>	Breast Carcinoma, Osteosarcoma, Ovarian Carcinoma, Prostate Carcinoma, Skin Basal Cell Carcinoma, Stomach Adenocarcinoma
---------------------------	--

<b>IHC MOUSE CONTROLS</b>	Plasmacytoma, Squamous Cell Carcinoma, Teratoma
---------------------------	---

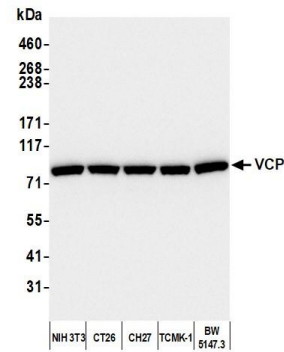
<b>ADDITIONAL INFO</b>	<a href="https://www.fortislife.com/p/A300-589A">https://www.fortislife.com/p/A300-589A</a>
------------------------	---

Use the link above to view SDS, a current list of citations, and other product specific information.

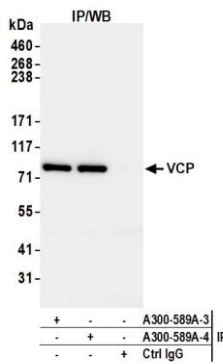
This document certifies that this product has met all of the quality control standards defined by Bethyl Laboratories, Inc.  
Michael Spencer, PhD Date: April 17, 2023



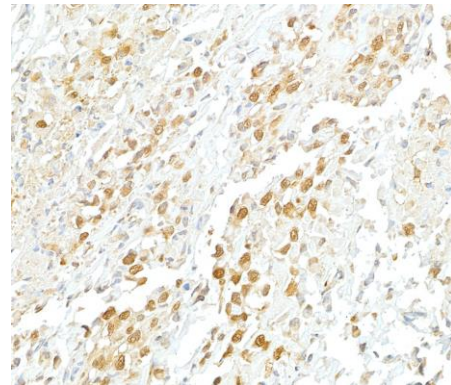
**Detection of human VCP by western blot.** *Samples:* Whole cell lysate (10 µg) from HeLa, HEK293T, Jurkat, GaMG, and U2OS cells prepared using NETN lysis buffer. *Antibody:* Affinity purified rabbit anti-VCP antibody (A300-589A lot 4) used for WB at 0.04 µg/ml. *Detection:* Chemiluminescence with an exposure time of 3 seconds.



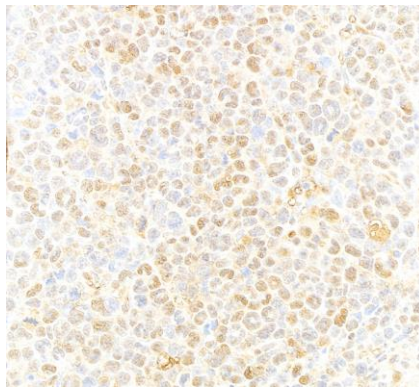
**Detection of mouse VCP by western blot.** *Samples:* Whole cell lysate (10 µg) from NIH 3T3, CT26, CH27, TCMK-1, and BW5147.3 cells prepared using NETN lysis buffer. *Antibody:* Affinity purified rabbit anti-VCP antibody (A300-589A lot 4) used for WB at 0.04 µg/ml. *Detection:* Chemiluminescence with an exposure time of 30 seconds.



**Detection of human VCP by western blot of immunoprecipitates.** *Samples:* Whole cell lysate (1 mg for IP; 5% of IP loaded) from HEK293T cells prepared using NETN lysis buffer. *Antibodies:* Affinity purified rabbit anti-VCP antibody (A300-589A lot 4) used for IP at 6 µg per reaction. VCP was also immunoprecipitated by a previous lot of this antibody (A300-589A lot 3). For blotting immunoprecipitated VCP, A300-589A was used at 0.04 µg/ml. *Detection:* Chemiluminescence with an exposure time of 1 second.



**Detection of human VCP by immunohistochemistry.** *Sample:* FFPE section of human osteosarcoma. *Antibody:* Affinity purified rabbit anti-VCP (Cat. No. A301-589 Lot4) used at a dilution of 1:2000 (0.2µg/ml). *Detection:* DAB



**Detection of mouse VCP by immunohistochemistry.**

*Sample:* FFPE section of mouse plasmacytoma. *Antibody:* Affinity purified rabbit anti- VCP (Cat. No. A301-589 Lot4) used at a dilution of 1:2000 (0.2µg/ml). *Detection:* DAB