



# SZABO SCANDIC

Part of Europa Biosite

## Produktinformation



Forschungsprodukte & Biochemikalien



Zellkultur & Verbrauchsmaterial



Diagnostik & molekulare Diagnostik



Laborgeräte & Service

Weitere Information auf den folgenden Seiten!  
See the following pages for more information!



### Lieferung & Zahlungsart

siehe unsere [Liefer- und Versandbedingungen](#)

### Zuschläge

- Mindermengenzuschlag
- Trockeneiszuschlag
- Gefahrgutzuschlag
- Expressversand

### SZABO-SCANDIC HandelsgmbH

Quellenstraße 110, A-1100 Wien

T. +43(0)1 489 3961-0

F. +43(0)1 489 3961-7

[mail@szabo-scandic.com](mailto:mail@szabo-scandic.com)

[www.szabo-scandic.com](http://www.szabo-scandic.com)

[linkedin.com/company/szaboscandic](https://www.linkedin.com/company/szaboscandic) 

# Matrin 3 Antibody

Rabbit Polyclonal

Antigen Affinity Purified

Protein ID NP\_061322.2

Catalog No. A300-590A-T

GeneID 9782

Lot No. A300-590A-T-1



<b>APPLICATIONS</b>	IP, IHC
<b>SPECIES REACTIVITY</b>	Human, Mouse
<b>PRESUMED REACTIVITY</b>	Based on 100% sequence identity, this antibody is predicted to react with Rat
<b>AMOUNT</b>	10 µl
<b>CONCENTRATION</b>	1000 µg/ml
<b>STORAGE/SHELF LIFE</b>	2 - 8° C / 1 year from date of receipt
<b>PHYSICAL STATE</b>	Liquid
<b>BUFFER</b>	Tris-citrate/phosphate buffer, pH 7 to 8 containing 0.09% Sodium Azide
<b>ISOTYPE</b>	IgG
<b>ORIGIN</b>	USA
<b>PRODUCTION PROCEDURES</b>	Antibody was affinity purified using an epitope specific to Matrin 3 immobilized on solid support.

The epitope recognized by A300-590A-T maps to a region between residues 475 and 500 of human Matrin 3 using the numbering given in entry NP\_061322.2 (GeneID 9782).

Immunoglobulin concentration was determined by extinction coefficient: absorbance at 280 nm of 1.4 equals 1.0 mg of IgG.

**APPLICATIONS** Centrifuge tube to remove product from lid. Optimal working dilutions should be determined experimentally by the investigator. Prepare working dilution immediately before use.

Western Blot Not recommended. Use rabbit anti-Matrin 3 antibody A300-591A.

Immunoprecipitation 1 - 4 µg/mg lysate

Immunohistochemistry 1:1,000 - 1:5,000. Epitope retrieval with citrate buffer pH 6.0 is recommended for FFPE tissue sections.

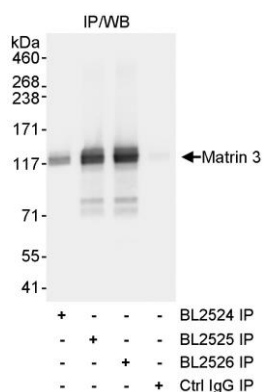
**APPLICATION NOTES** Western blot of immunoprecipitates performed using Normal Pig Serum (Cat. No. S100-020), Goat anti-Rabbit Light Chain HRP Conjugate (Cat. No. A120-113P) and 4-8% SDS-PAGE (link to IP-western blot protocol in Additional Info section below).

**ADDITIONAL INFO** <https://www.bethyl.com/product/A300-590A-T>

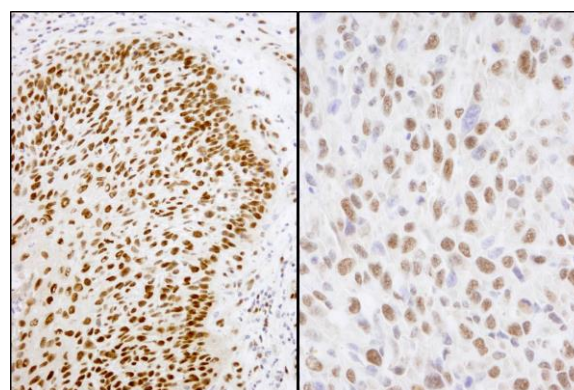
Use the link above to view SDS, a current list of citations, and other product specific information.

IP-western blot protocol: [https://www.bethyl.com/content/protocol\\_IP\\_WB](https://www.bethyl.com/content/protocol_IP_WB)

This document certifies that this product has met all of the quality control standards defined by Bethyl Laboratories, Inc.  
Eric McIntush, PhD | Chief Scientific Officer Date: June 21, 2019



**Detection of human Matrin 3 by western blot of immunoprecipitates.** *Samples:* Whole cell lysate (1 mg for IP, 1/4 of IP loaded) from HeLa cells. *Antibody:* Affinity purified rabbit anti-Matrin 3 antibody BL2525 (Cat. No. A300-590A-T) used for IP at 3 µg/mg lysate. Matrin 3 was also immunoprecipitated using rabbit anti-Matrin 3 antibodies BL2524 and BL2526 (Cat. No. A300-591A) at 3 µg/mg lysate. immunoprecipitatesd Matrin 3 was blotted using BL2526 at 1 µg/ml. *Detection:* Chemiluminescence with an exposure time of 3 seconds.



**Detection of human and mouse Matrin 3 by immunohistochemistry.** *Samples:* FFPE section of human laryngeal squamous cell carcinoma (left) and mouse squamous cell carcinoma (right). *Antibody:* Affinity purified rabbit anti-Matrin 3 (Cat. No. A300-590A-T Lot1) used at a dilution of 1:1,000 (1 µg/ml). *Detection:* DAB.