



SZABO SCANDIC

Part of Europa Biosite

Produktinformation



Forschungsprodukte & Biochemikalien



Zellkultur & Verbrauchsmaterial



Diagnostik & molekulare Diagnostik



Laborgeräte & Service

Weitere Information auf den folgenden Seiten!
See the following pages for more information!



Lieferung & Zahlungsart

siehe unsere [Liefer- und Versandbedingungen](#)

Zuschläge

- Mindermengenzuschlag
- Trockeneiszuschlag
- Gefahrgutzuschlag
- Expressversand

SZABO-SCANDIC HandelsgmbH

Quellenstraße 110, A-1100 Wien

T. +43(0)1 489 3961-0

F. +43(0)1 489 3961-7

mail@szabo-scandic.com

www.szabo-scandic.com

[linkedin.com/company/szaboscandic](https://www.linkedin.com/company/szaboscandic) 

Matrin 3 Antibody

Rabbit Polyclonal

Antigen Affinity Purified

Protein ID NP_061322.2

Catalog No. A300-591A

GeneID 9782

Lot No. A300-591A-1



APPLICATIONS	WB, IP, IHC, IHC-IF
SPECIES REACTIVITY	Human, Mouse
AMOUNT	100 µl
CONCENTRATION	200 µg/ml
STORAGE/SHELF LIFE	2 - 8° C / 1 year from date of receipt
PHYSICAL STATE	Liquid
BUFFER	Tris-buffered Saline containing 0.1% BSA and 0.09% Sodium Azide
ISOTYPE	IgG
ORIGIN	USA
PRODUCTION PROCEDURES	Antibody was affinity purified using an epitope specific to Matrin 3 immobilized on solid support.

The epitope recognized by A300-591A maps to a region between residue 800 and the C-terminus (residue 847) of human Matrin 3 using the numbering given in entry NP_061322.2 (GeneID 9782).

Immunoglobulin concentration was determined by extinction coefficient: absorbance at 280 nm of 1.4 equals 1.0 mg of IgG.

APPLICATIONS Centrifuge tube to remove product from lid. Optimal working dilutions should be determined experimentally by the investigator. Prepare working dilution immediately before use.

Western Blot	1:5,000 – 1:15,000
Immunoprecipitation	1 – 4 µg/mg lysate
Immunohistochemistry	1:500 – 1:2,000. Epitope retrieval with citrate buffer pH 6.0 is recommended for FFPE tissue sections.
Immunofluorescence (IHC)	1:250 – 1:1,000

APPLICATION NOTES Western blot of immunoprecipitates performed using Normal Pig Serum (Cat. No. S100-020), Goat anti-Rabbit Light Chain HRP Conjugate (Cat. No. A120-113P) and 4-8% SDS-PAGE (link to IP-western blot protocol in Additional Info section below).

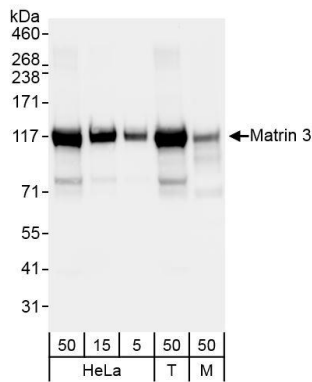
IHC HUMAN CONTROLS Western blot of lysates performed using standard western blot reagents and 4-8% SDS-PAGE. Breast Carcinoma, Colon Carcinoma, Laryngeal Squamous Cell Carcinoma, Non-Small Cell Lung Cancer, Ovarian Carcinoma, Small Cell Lung Cancer, Stomach Adenocarcinoma

IHC MOUSE CONTROLS Squamous Cell Carcinoma

ADDITIONAL INFO <https://www.bethyl.com/product/A300-591A>

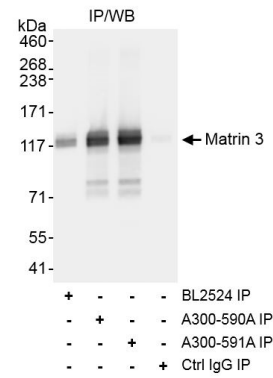
Use the link above to view SDS, a current list of citations, and other product specific information. IP-western blot protocol https://www.bethyl.com/content/protocol_IP_WB

This document certifies that this product has met all of the quality control standards defined by Bethyl Laboratories, Inc.
Eric McIntush, PhD | Chief Scientific Officer Date: October 16, 2019



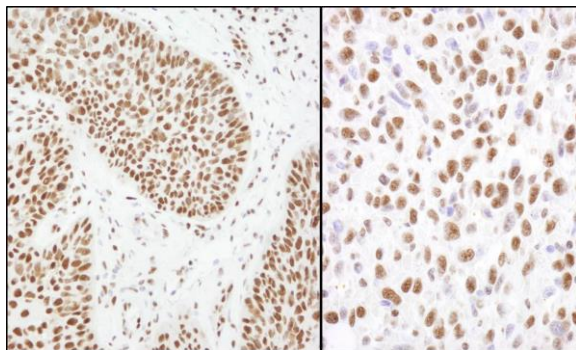
Detection of human and mouse Matrin 3 by western blot.

Samples: Whole cell lysate from HeLa (5, 15 and 50 µg), HEK293T (T, 50 µg) and mouse NIH 3T3 (M, 50 µg) cells. *Antibodies:* Affinity purified rabbit anti-Matrin 3 antibody A300-591A (lot A300-591A-1) used for WB at 0.04 µg/ml. *Detection:* Chemiluminescence with exposure time of 30 seconds.

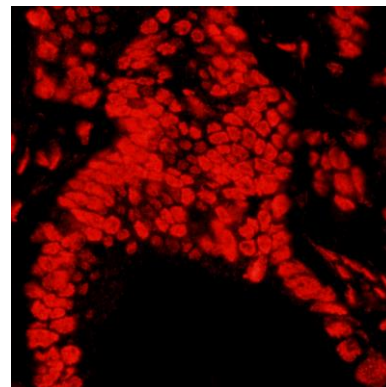


Detection of human Matrin 3 by western blot of immunoprecipitates.

Samples: Whole cell lysate (1 mg for IP, 1/4 of IP loaded) from HeLa cells. *Antibodies:* Affinity purified rabbit anti-Matrin 3 antibody A300-591A (lot A300-591A-1) used for IP at 3 µg/mg lysate. Matrin 3 was also immunoprecipitated using rabbit anti-Matrin 3 antibodies BL2524 and A300-591A. For blotting immunoprecipitated Matrin 3, A300-591A was used at 1 µg/ml. *Detection:* Chemiluminescence with exposure time of 3 seconds.



Detection of human and mouse Matrin 3 by immunohistochemistry. *Sample:* FFPE section of human laryngeal squamous cell carcinoma (left) and mouse squamous cell carcinoma (right). *Antibody:* Affinity purified rabbit anti-Matrin 3 (Cat. No. A300-591A lot 1) used at a dilution of 1:1,000 (0.2µg/ml). *Detection:* DAB



Detection of human Matrin 3 by immunohistochemistry. *Sample:* FFPE section of human stomach carcinoma. *Antibody:* Affinity purified rabbit anti-Matrin 3 (Cat. No. A300-591A lot 1) used at a dilution of 1:400 (0.5µg/ml). *Detection:* Red-fluorescent goat anti-rabbit IgG-heavy and light chain cross-adsorbed Antibody DyLight® 594 Conjugated used at a dilution of 1:100.