



SZABO SCANDIC

Part of Europa Biosite

Produktinformation



Forschungsprodukte & Biochemikalien



Zellkultur & Verbrauchsmaterial



Diagnostik & molekulare Diagnostik



Laborgeräte & Service

Weitere Information auf den folgenden Seiten!
See the following pages for more information!



Lieferung & Zahlungsart

siehe unsere [Liefer- und Versandbedingungen](#)

Zuschläge

- Mindermengenzuschlag
- Trockeneiszuschlag
- Gefahrgutzuschlag
- Expressversand

SZABO-SCANDIC HandelsgmbH

Quellenstraße 110, A-1100 Wien

T. +43(0)1 489 3961-0

F. +43(0)1 489 3961-7

mail@szabo-scandic.com

www.szabo-scandic.com

[linkedin.com/company/szaboscandic](https://www.linkedin.com/company/szaboscandic) 

CAP-G Antibody

Rabbit Polyclonal

Antigen Affinity Purified

Protein ID NP_071741.2

Catalog No. A300-602A-T

GeneID 64151

Lot No. A300-602A-T-2

APPLICATIONS WB, IP

SPECIES REACTIVITY Human

AMOUNT 10 µl

CONCENTRATION 200 µg/ml

STORAGE/SHELF LIFE 2 – 8°C / 1 year from date of receipt

PHYSICAL STATE Liquid

BUFFER Tris-buffered Saline containing 0.1% BSA and 0.09% Sodium Azide

ISOTYPE IgG

ORIGIN USA

PRODUCTION PROCEDURES Antibody was affinity purified using an epitope specific to CAP-G immobilized on solid support.

The epitope recognized by A300-602A-T maps to a region between residue 950 and the C-terminus (residue 1015) of human Chromosome Associated Protein G (Chromosome Condensation Protein G) using the numbering given in entry NP_071741.2 (GeneID 64151).

APPLICATIONS Centrifuge tube to remove product from lid. Optimal working dilutions should be determined experimentally by the investigator. Prepare working dilution immediately before use.

Western Blot 1:2,000 – 1:10,000

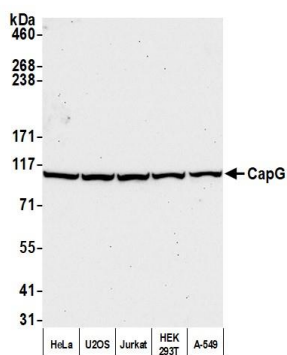
Immunoprecipitation 1 – 10 µg/mg lysate

ADDITIONAL INFO <https://www.bethyl.com/product/A300-602A-T>

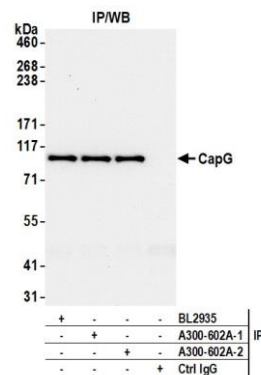
Use the link above to view SDS, a current list of citations, and other product specific information.

IP-western blot protocol: https://www.bethyl.com/content/protocol_IP_WB

This document certifies that this product has met all of the quality control standards defined by Bethyl Laboratories, Inc.
Michael Spencer, PhD Date: June 6, 2022



Detection of human CapG by western blot. *Samples:* Whole cell lysate (50 μ g) from HeLa, U2OS, Jurkat, HEK293T, and A-549 cells prepared using NETN lysis buffer. *Antibody:* Affinity purified rabbit anti-CapG antibody (A300-602A lot 2) used for WB at 0.1 μ g/ml. *Detection:* Chemiluminescence with an exposure time of 30 seconds.



Detection of human CapG by western blot of immunoprecipitates. *Samples:* Whole cell lysate (1.0 mg per IP reaction; 20% of IP loaded) from HeLa cells prepared using NETN lysis buffer. *Antibodies:* Affinity purified rabbit anti-CapG antibody (A300-602A lot 2) used for IP at 6 μ g per reaction. CapG was also immunoprecipitated by a previous lot of this antibody (A300-602A lot 1) and a second antibody against a different epitope of CapG (BL2935). For blotting immunoprecipitated CapG, A300-602A was used at 0.2 μ g/ml. *Detection:* Chemiluminescence with an exposure time of 10 seconds.