



SZABO SCANDIC

Part of Europa Biosite

Produktinformation



Forschungsprodukte & Biochemikalien



Zellkultur & Verbrauchsmaterial



Diagnostik & molekulare Diagnostik



Laborgeräte & Service

Weitere Information auf den folgenden Seiten!
See the following pages for more information!



Lieferung & Zahlungsart

siehe unsere [Liefer- und Versandbedingungen](#)

Zuschläge

- Mindermengenzuschlag
- Trockeneiszuschlag
- Gefahrgutzuschlag
- Expressversand

SZABO-SCANDIC HandelsgmbH

Quellenstraße 110, A-1100 Wien

T. +43(0)1 489 3961-0

F. +43(0)1 489 3961-7

mail@szabo-scandic.com

www.szabo-scandic.com

[linkedin.com/company/szaboscandic](https://www.linkedin.com/company/szaboscandic) 

CAP-G Antibody

Rabbit Polyclonal

Antigen Affinity Purified

Protein ID NP_071741.2

Catalog No. A300-602A

GeneID 64151

Lot No. A300-602A-2

APPLICATIONS WB, IP

SPECIES REACTIVITY Human

AMOUNT 100 µl

CONCENTRATION 200 µg/ml

STORAGE/SHELF LIFE 2 – 8°C / 1 year from date of receipt

PHYSICAL STATE Liquid

BUFFER Tris-buffered Saline containing 0.1% BSA and 0.09% Sodium Azide

ISOTYPE IgG

ORIGIN USA

PRODUCTION PROCEDURES Antibody was affinity purified using an epitope specific to CAP-G immobilized on solid support.

The epitope recognized by A300-602A maps to a region between residue 950 and the C-terminus (residue 1015) of human Chromosome Associated Protein G (Chromosome Condensation Protein G) using the numbering given in entry NP_071741.2 (GeneID 64151).

Immunoglobulin concentration was determined by extinction coefficient: absorbance at 280 nm of 1.4 equals 1.0 mg of IgG.

APPLICATIONS Centrifuge tube to remove product from lid. Optimal working dilutions should be determined experimentally by the investigator. Prepare working dilution immediately before use.

Western Blot 1:2,000 – 1:10,000

Immunoprecipitation 1 – 10 µg/mg lysate

ADDITIONAL INFO <https://www.bethyl.com/product/A300-602A>

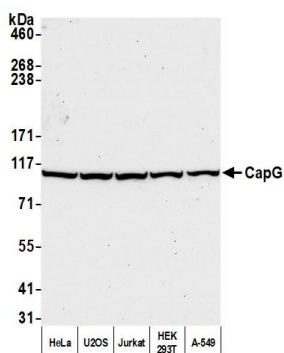
Use the link above to view SDS, a current list of citations, and other product specific information.

IP-western blot protocol: https://www.bethyl.com/content/protocol_IP_WB

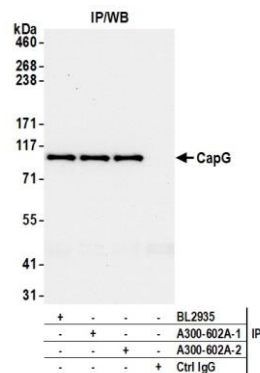
This document certifies that this product has met all of the quality control standards defined by Bethyl Laboratories, Inc.

Michael Spencer, PhD

Date: February 10, 2022



Detection of human CapG by western blot. *Samples:* Whole cell lysate (50 μ g) from HeLa, U2OS, Jurkat, HEK293T, and A-549 cells prepared using NETN lysis buffer. ***Antibody:*** Affinity purified rabbit anti-CapG antibody (A300-602A lot 2) used for WB at 0.1 μ g/ml. ***Detection:*** Chemiluminescence with an exposure time of 30 seconds.



Detection of human CapG by western blot of immunoprecipitates. *Samples:* Whole cell lysate (1.0 mg per IP reaction; 20% of IP loaded) from HeLa cells prepared using NETN lysis buffer. ***Antibodies:*** Affinity purified rabbit anti-CapG antibody (A300-602A lot 2) used for IP at 6 μ g per reaction. CapG was also immunoprecipitated by a previous lot of this antibody (A300-602A lot 1) and a second antibody against a different epitope of CapG (BL2935). For blotting immunoprecipitated CapG, A300-602A was used at 0.2 μ g/ml. ***Detection:*** Chemiluminescence with an exposure time of 10 seconds.